

ARG45185 anti-MMP28 antibody

Package: 50 µg
Store at: -20°C

Summary

Product Description	Rabbit Polyclonal antibody recognizes MMP28
Tested Reactivity	Hu
Tested Application	FACS, ICC/IF, WB
Host	Rabbit
Clonality	Polyclonal
Isotype	Rabbit IgG
Target Name	MMP28
Species	Human
Immunogen	Recombinant protein containing to human MMP28.
Conjugation	Un-conjugated
Alternate Names	Troponin I, fast skeletal muscle; Troponin I, fast-twitch isoform; TNNI2

Application Instructions

Application table	Application	Dilution
	FACS	1 - 3 µg/10 ⁶ cells
	ICC/IF	5 µg/ml
	WB	0.25-0.5 µg/ml
Application Note	* The dilutions indicate recommended starting dilutions and the optimal dilutions or concentrations should be determined by the scientist.	
Observed Size	48 kDa	

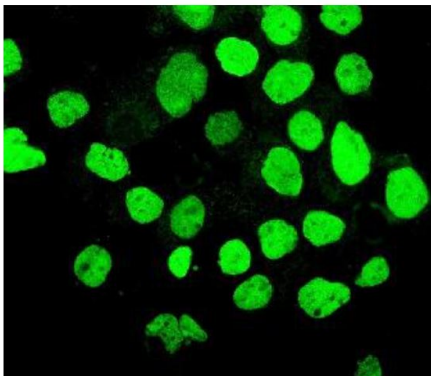
Properties

Form	Liquid
Purification	Affinity purification with immunogen.
Buffer	0.9% NaCl, 0.2% Na ₂ HPO ₄ , 0.01% Sodium azide and 4% Trehalose.
Preservative	0.01% Sodium azide
Stabilizer	4% Trehalose
Concentration	0.5 mg/ml
Storage instruction	For continuous use, store undiluted antibody at 2-8°C for up to a week. For long-term storage, aliquot and store at -20°C or below. Storage in frost free freezers is not recommended. Avoid repeated freeze/thaw cycles. Suggest spin the vial prior to opening. The antibody solution should be gently mixed before use.

Bioinformation

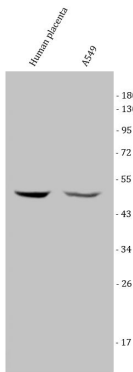
Gene Symbol	MMP28
Gene Full Name	Matrix Metallopeptidase 28
Background	Proteins of the matrix metalloproteinase (MMP) family are involved in the breakdown of extracellular matrix for both normal physiological processes, such as embryonic development, reproduction and tissue remodeling, and disease processes, such as asthma and metastasis. This gene encodes a secreted enzyme that degrades casein. Its expression pattern suggests that it plays a role in tissue homeostasis and in wound repair. Alternative splicing of this gene results in multiple transcript variants. [provided by RefSeq, Apr 2014]
Function	Can degrade casein. Could play a role in tissues homeostasis and repair. [UniProt]
Calculated Mw	59 kDa
PTM	Cleavage on pair of basic residues; Disulfide bond; Glycoprotein; Zymogen. [UniProt]
Cellular Localization	Extracellular matrix; Secreted. [UniProt]

Images



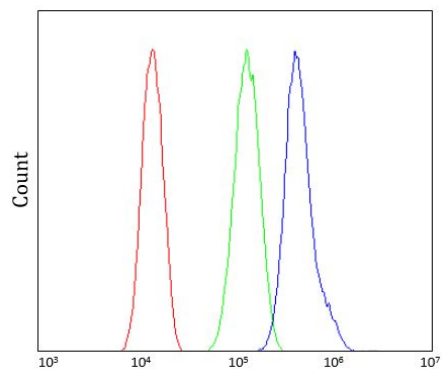
ARG45185 anti-MMP28 antibody ICC/IF image

Immunofluorescence: A431 stained with ARG45185 anti-MMP28 antibody at 5 ug/ml dilution.



ARG45185 anti-MMP28 antibody WB image

Western blot: Human placenta and A549 stained with ARG45185 anti-MMP28 antibody at 0.5 µg/ml dilution.



ARG45185 anti-MMP28 antibody FACS image

Flow Cytometry: A549 stained with ARG45185 anti-MMP28 antibody at $1\text{ }\mu\text{g}/10^6$ cells dilution.