

ARG45187 anti-KIBRA antibody

Package: 50 µg
Store at: -20°C

Summary

Product Description	Rabbit Polyclonal antibody recognizes KIBRA
Tested Reactivity	Hu, Ms, Rat
Tested Application	FACS, ICC/IF, WB
Host	Rabbit
Clonality	Polyclonal
Isotype	Rabbit IgG
Target Name	KIBRA
Species	Human
Immunogen	Recombinant protein containing to human KIBRA.
Conjugation	Un-conjugated
Alternate Names	WWC1; Elongator complex protein 3; Help3; ELP3

Application Instructions

Application table	Application	Dilution
	FACS	1 - 3 µg/10 ⁶ cells
	ICC/IF	5 µg/ml
	WB	0.25-0.5 µg/ml
Application Note	* The dilutions indicate recommended starting dilutions and the optimal dilutions or concentrations should be determined by the scientist.	
Observed Size	130 kDa	

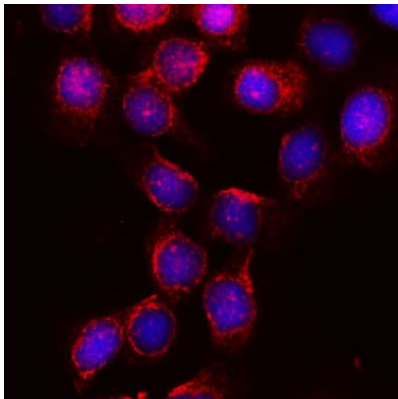
Properties

Form	Liquid
Purification	Affinity purification with immunogen.
Buffer	0.9% NaCl, 0.2% Na ₂ HPO ₄ , 0.01% Sodium azide and 4% Trehalose.
Preservative	0.01% Sodium azide
Stabilizer	4% Trehalose
Concentration	0.5 mg/ml
Storage instruction	For continuous use, store undiluted antibody at 2-8°C for up to a week. For long-term storage, aliquot and store at -20°C or below. Storage in frost free freezers is not recommended. Avoid repeated freeze/thaw cycles. Suggest spin the vial prior to opening. The antibody solution should be gently mixed before use.

Bioinformation

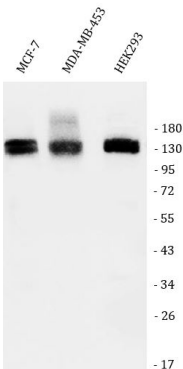
Gene Symbol	WWC1
Gene Full Name	WW And C2 Domain Containing 1
Background	The protein encoded by this gene is a cytoplasmic phosphoprotein that interacts with PRKC-zeta and dynein light chain-1. Alleles of this gene have been found that enhance memory in some individuals. Three transcript variants encoding different isoforms have been found for this gene. [provided by RefSeq, Mar 2010]
Function	Regulator of the Hippo signaling pathway, also known as the Salvador-Warts-Hippo (SWH) pathway. [UniProt]
Calculated Mw	125 kDa
PTM	Phosphoprotein. [UniProt]
Cellular Localization	Cell membrane; Cell projection; Cytoplasm; Membrane; Nucleus. [UniProt]

Images



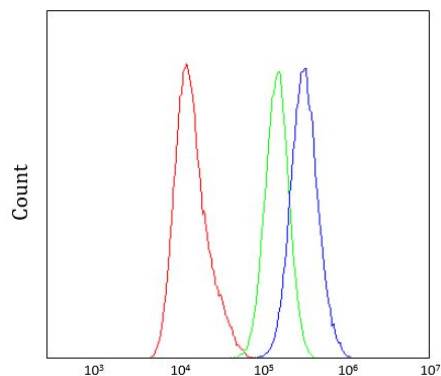
ARG45187 anti-KIBRA antibody ICC/IF image

Immunofluorescence: A431 stained with ARG45187 anti-KIBRA antibody at 5 ug/ml dilution.



ARG45187 anti-KIBRA antibody WB image

Western blot: MCF-7, MDA-MB-453, and HEK293 stained with ARG45187 anti-KIBRA antibody at 0.5 µg/ml dilution.



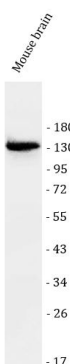
ARG45187 anti-KIBRA antibody FACS image

Flow Cytometry: A431 stained with ARG45187 anti-KIBRA antibody at 1 $\mu\text{g}/10^6$ cells dilution.



ARG45187 anti-KIBRA antibody WB image

Western blot: Rat brain stained with ARG45187 anti-KIBRA antibody at 0.5 $\mu\text{g}/\text{ml}$ dilution.



ARG45187 anti-KIBRA antibody WB image

Western blot: Mouse brain stained with ARG45187 anti-KIBRA antibody at 0.5 $\mu\text{g}/\text{ml}$ dilution.