

ARG45190 anti-p38 beta / MAPK11 antibody

Package: 50 µg
Store at: -20°C

Summary

Product Description	Rabbit Polyclonal antibody recognizes p38 beta / MAPK11
Tested Reactivity	Hu, Ms, Rat
Tested Application	FACS, ICC/IF, IHC-P, WB
Host	Rabbit
Clonality	Polyclonal
Isotype	Rabbit IgG
Target Name	p38 beta / MAPK11
Species	Human
Immunogen	Recombinant protein containing to human p38 beta / MAPK11.
Conjugation	Un-conjugated
Alternate Names	MAPK11; Mitogen-Activated Protein Kinase 11; P38-2; SAPK2; P38Beta; PRKM11; Mitogen-Activated Protein Kinase P38 Beta; MAP Kinase P38 Beta; MAP Kinase 11; EC 2.7.11.24; SAPK2B

Application Instructions

Application table	Application	Dilution
	FACS	1 - 3 µg/10 ⁶ cells
	ICC/IF	5 µg/ml
	IHC-P	2-5 µg/ml
	WB	0.25-0.5 µg/ml
Application Note	* The dilutions indicate recommended starting dilutions and the optimal dilutions or concentrations should be determined by the scientist.	
Observed Size	45 kDa	

Properties

Form	Liquid
Purification	Affinity purification with immunogen.
Buffer	0.9% NaCl, 0.2% Na ₂ HPO ₄ , 0.01% Sodium azide and 4% Trehalose.
Preservative	0.01% Sodium azide
Stabilizer	4% Trehalose
Concentration	0.5 mg/ml
Storage instruction	For continuous use, store undiluted antibody at 2-8°C for up to a week. For long-term storage, aliquot and store at -20°C or below. Storage in frost free freezers is not recommended. Avoid repeated

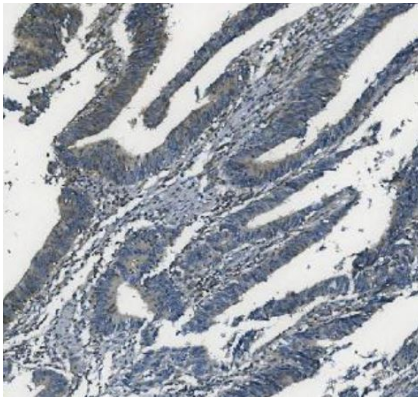
freeze/thaw cycles. Suggest spin the vial prior to opening. The antibody solution should be gently mixed before use.

Note For laboratory research only, not for drug, diagnostic or other use.

Bioinformation

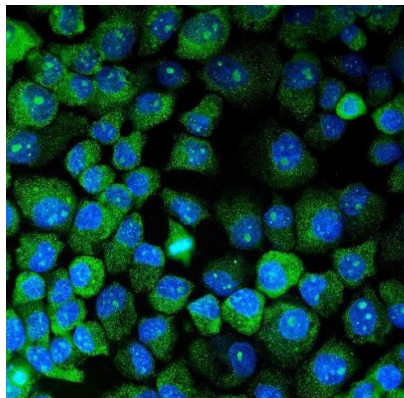
Gene Symbol	MAPK11
Gene Full Name	Mitogen-Activated Protein Kinase 11
Background	This gene encodes a member of a family of protein kinases that are involved in the integration of biochemical signals for a wide variety of cellular processes, including cell proliferation, differentiation, transcriptional regulation, and development. The encoded protein can be activated by proinflammatory cytokines and environmental stresses through phosphorylation by mitogen activated protein kinase kinases (MKKs). Alternative splicing results in multiple transcript variants. [provided by RefSeq, Mar 2014]
Function	Serine/threonine kinase which acts as an essential component of the MAP kinase signal transduction pathway. [UniProt]
Calculated Mw	41 kDa
PTM	Phosphoprotein. [UniProt]
Cellular Localization	Cytoplasm; Nucleus[UniProt]

Images



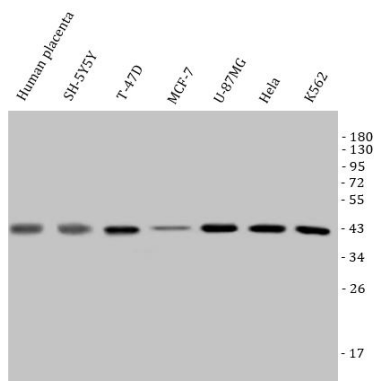
ARG45190 anti-p38 beta / MAPK11 antibody IHC-P image

Immunohistochemistry: Human rectal cancer stained with ARG45190 anti-p38 beta / MAPK11 antibody at 2 µg/ml dilution.



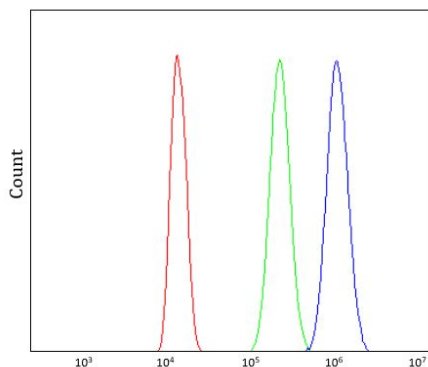
ARG45190 anti-p38 beta / MAPK11 antibody ICC/IF image

Immunofluorescence: A431 stained with ARG45190 anti-p38 beta / MAPK11 antibody at 5 µg/ml dilution.



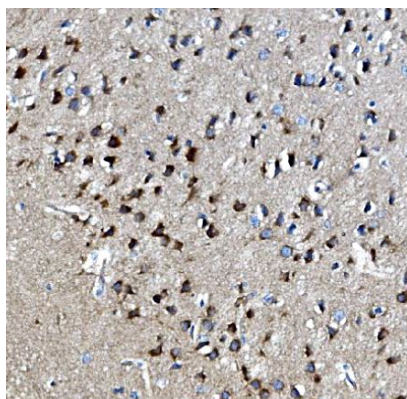
ARG45190 anti-p38 beta / MAPK11 antibody WB image

Western blot: Human placenta, SH-5Y5Y, T-47D, MCF-7, U-87MG, HeLa, and K562 stained with ARG45190 anti-p38 beta / MAPK11 antibody at 0.5 $\mu\text{g/ml}$ dilution.



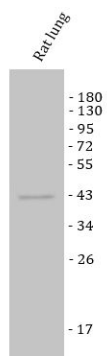
ARG45190 anti-p38 beta / MAPK11 antibody FACS image

Flow Cytometry: THP-1 stained with ARG45190 anti-p38 beta / MAPK11 antibody at 1 $\mu\text{g}/10^6$ cells dilution.



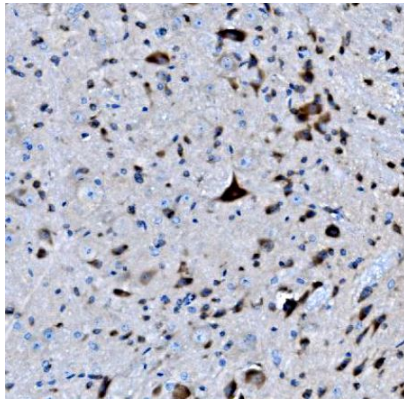
ARG45190 anti-p38 beta / MAPK11 antibody IHC-P image

Immunohistochemistry: Rat brain stained with ARG45190 anti-p38 beta / MAPK11 antibody at 2 $\mu\text{g/ml}$ dilution.



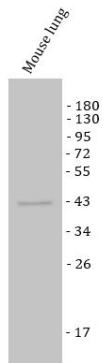
ARG45190 anti-p38 beta / MAPK11 antibody WB image

Western blot: Rat lung stained with ARG45190 anti-p38 beta / MAPK11 antibody at 0.5 $\mu\text{g/ml}$ dilution.



ARG45190 anti-p38 beta / MAPK11 antibody IHC-P image

Immunohistochemistry: Mouse brain stained with ARG45190 anti-p38 beta / MAPK11 antibody at 2 µg/ml dilution.



ARG45190 anti-p38 beta / MAPK11 antibody WB image

Western blot: Mouse lung stained with ARG45190 anti-p38 beta / MAPK11 antibody at 0.5 µg/ml dilution.