

## ARG45197 anti-GCHFR antibody

Package: 50 µg  
Store at: -20°C

### Summary

Product Description	Rabbit Polyclonal antibody recognizes GCHFR
Tested Reactivity	Hu, Ms, Rat
Tested Application	FACS, ICC/IF, IHC-P, WB
Host	Rabbit
Clonality	Polyclonal
Isotype	Rabbit IgG
Target Name	GCHFR
Species	Human
Immunogen	Recombinant protein containing to human GCHFR.
Conjugation	Un-conjugated
Alternate Names	GCHFR; GTP Cyclohydrolase I Feedback Regulator; GFRP; GTP Cyclohydrolase I Feedback Regulatory Protein; HsT16933; GTP Cyclohydrolase 1 Feedback Regulatory Protein; P35

### Application Instructions

Application table	Application	Dilution
	FACS	1 - 3 µg/10 <sup>6</sup> cells
	ICC/IF	5 µg/ml
	IHC-P	2-5 µg/ml
	WB	0.1-0.25 µg/ml
Application Note	* The dilutions indicate recommended starting dilutions and the optimal dilutions or concentrations should be determined by the scientist.	
Observed Size	12 kDa	

### Properties

Form	Liquid
Purification	Affinity purification with immunogen.
Buffer	0.9% NaCl, 0.2% Na <sub>2</sub> HPO <sub>4</sub> , 0.005% Sodium azide and 4% Trehalose.
Preservative	0.005% Sodium azide
Stabilizer	4% Trehalose
Concentration	0.5 mg/ml
Storage instruction	For continuous use, store undiluted antibody at 2-8°C for up to a week. For long-term storage, aliquot and store at -20°C or below. Storage in frost free freezers is not recommended. Avoid repeated

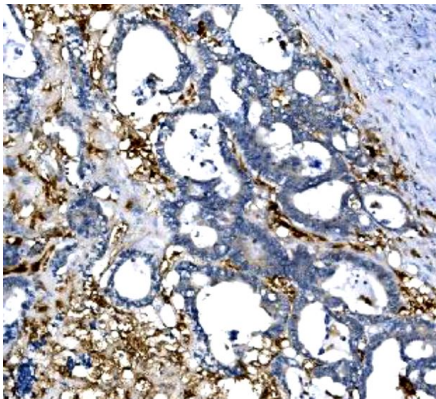
freeze/thaw cycles. Suggest spin the vial prior to opening. The antibody solution should be gently mixed before use.

**Note** For laboratory research only, not for drug, diagnostic or other use.

## Bioinformation

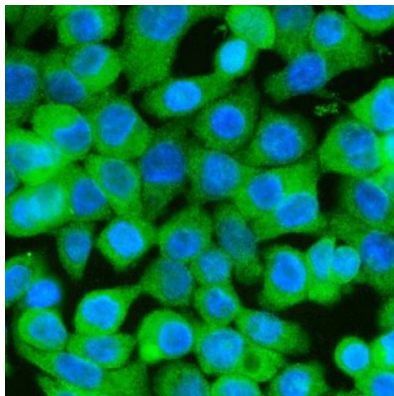
Gene Symbol	GCHFR
Gene Full Name	GTP Cyclohydrolase I Feedback Regulator
Background	GTP cyclohydrolase I feedback regulatory protein binds to and mediates tetrahydrobiopterin inhibition of GTP cyclohydrolase I. The regulatory protein, GCHFR, consists of a homodimer. It is postulated that GCHFR may play a role in regulating phenylalanine metabolism in the liver and in the production of biogenic amine neurotransmitters and nitric oxide. [provided by RefSeq, Jul 2008]
Function	Mediates tetrahydrobiopterin inhibition of GTP cyclohydrolase 1. This inhibition is reversed by L-phenylalanine.. [UniProt]
Calculated Mw	10 kDa
Cellular Localization	Cytoplasm; Membrane; Nucleus. [UniProt]

## Images



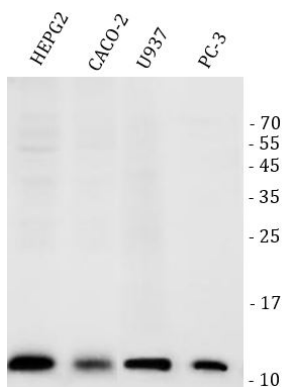
ARG45197 anti-GCHFR antibody IHC-P image

Immunohistochemistry: Human rectal cancer stained with ARG45197 anti-GCHFR antibody at 2 µg/ml dilution.



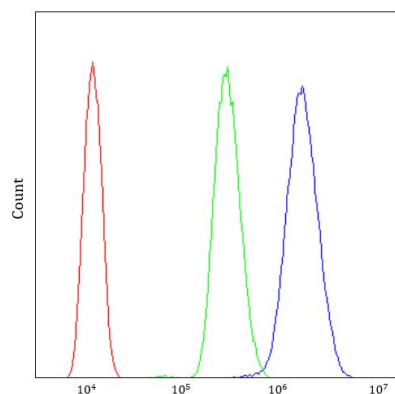
ARG45197 anti-GCHFR antibody ICC/IF image

Immunofluorescence: CACO-2 stained with ARG45197 anti-GCHFR antibody at 5 µg/ml dilution.



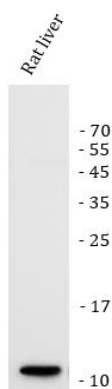
#### ARG45197 anti-GCHFR antibody WB image

Western blot: HEPG2, CACO-2, U937, and PC-3 stained with ARG45197 anti-GCHFR antibody at 0.5  $\mu\text{g}/\text{ml}$  dilution.



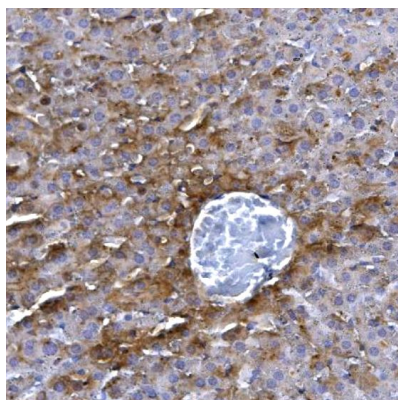
#### ARG45197 anti-GCHFR antibody FACS image

Flow Cytometry: HL-60 stained with ARG45197 anti-GCHFR antibody at 1  $\mu\text{g}/10^6$  cells dilution.



#### ARG45197 anti-GCHFR antibody WB image

Western blot: Rat liver stained with ARG45197 anti-GCHFR antibody at 0.5  $\mu\text{g}/\text{ml}$  dilution.



#### ARG45197 anti-GCHFR antibody IHC-P image

Immunohistochemistry: Mouse liver stained with ARG45197 anti-GCHFR antibody at 2  $\mu\text{g}/\text{ml}$  dilution.



#### ARG45197 anti-GCHFR antibody WB image

Western blot: Mouse liver stained with ARG45197 anti-GCHFR antibody at 0.5  $\mu\text{g}/\text{ml}$  dilution.