

ARG45202 anti-LSM5 antibody

Package: 50 µg
Store at: -20°C

Summary

Product Description	Rabbit Polyclonal antibody recognizes LSM5
Tested Reactivity	Hu, Ms, Rat
Tested Application	FACS, ICC/IF, IHC-P, WB
Host	Rabbit
Clonality	Polyclonal
Isotype	Rabbit IgG
Target Name	LSM5
Species	Human
Immunogen	Recombinant protein containing to human LSM5.
Conjugation	Un-conjugated
Alternate Names	Protein NDRG3; N-myc downstream-regulated gene 3 protein; NDRG3;

Application Instructions

Application table	Application	Dilution
	FACS	1 - 3 µg/10 ⁶ cells
	ICC/IF	5 µg/ml
	IHC-P	2-5 µg/ml
	WB	0.1-0.5 µg/ml
Application Note	* The dilutions indicate recommended starting dilutions and the optimal dilutions or concentrations should be determined by the scientist.	
Observed Size	12 kDa	

Properties

Form	Liquid
Purification	Affinity purification with immunogen.
Buffer	0.9% NaCl, 0.2% Na ₂ HPO ₄ , 0.01% Sodium azide and 4% Trehalose.
Preservative	0.01% Sodium azide
Stabilizer	4% Trehalose
Concentration	0.5 mg/ml
Storage instruction	For continuous use, store undiluted antibody at 2-8°C for up to a week. For long-term storage, aliquot and store at -20°C or below. Storage in frost free freezers is not recommended. Avoid repeated freeze/thaw cycles. Suggest spin the vial prior to opening. The antibody solution should be gently mixed

before use.

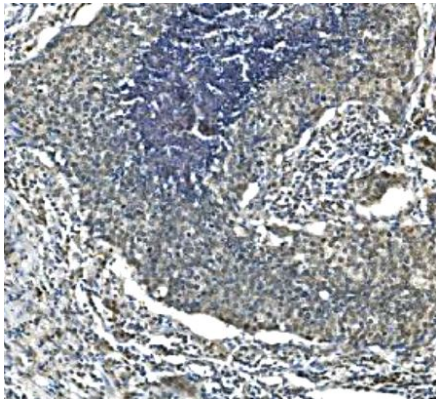
Note

For laboratory research only, not for drug, diagnostic or other use.

Bioinformation

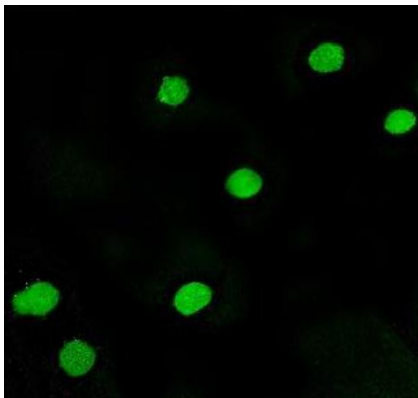
Gene Symbol	LSM5
Gene Full Name	LSM5 Homolog, U6 Small Nuclear RNA And MRNA Degradation Associated
Background	U6 snRNA-associated Sm-like protein LSm5 is a protein that in humans is encoded by the LSM5 gene. Sm-like proteins were identified in a variety of organisms based on sequence homology with the Sm protein family (see SNRPD2; MIM 601061). Sm-like proteins contain the Sm sequence motif, which consists of 2 regions separated by a linker of variable length that folds as a loop. The Sm-like proteins are thought to form a stable heteromer present in tri-snRNP particles, which are important for pre-mRNA splicing.
Function	Plays a role in pre-mRNA splicing as component of the U4/U6-U5 tri-snRNP complex that is involved in spliceosome assembly, and as component of the precatalytic spliceosome (spliceosome B complex). [UniProt]
Calculated Mw	10 kDa
PTM	Acetylation. [UniProt]
Cellular Localization	Nucleus. [UniProt]

Images



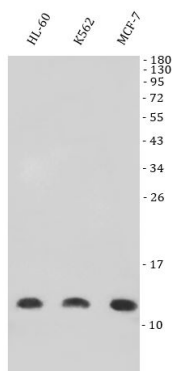
ARG45202 anti-LSM5 antibody IHC-P image

Immunohistochemistry: Human lung cancer stained with ARG45202 anti-LSM5 antibody at 2 ug/ml dilution.



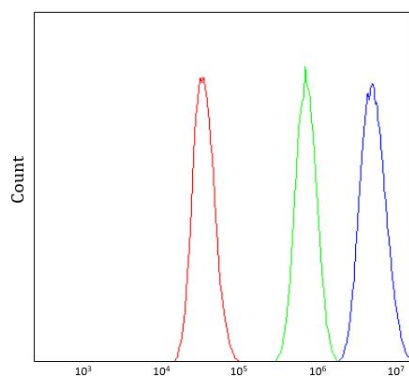
ARG45202 anti-LSM5 antibody ICC/IF image

Immunofluorescence: MCF-7 stained with ARG45202 anti-LSM5 antibody at 2 ug/ml dilution.



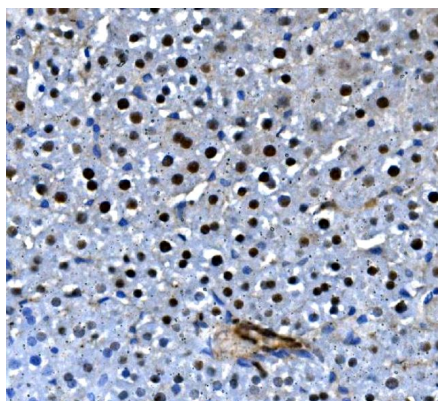
ARG45202 anti-LSM5 antibody WB image

Western blot: HL-60, K562, and MCF-7 stained with ARG45202 anti-LSM5 antibody at 0.5 $\mu\text{g}/\text{ml}$ dilution.



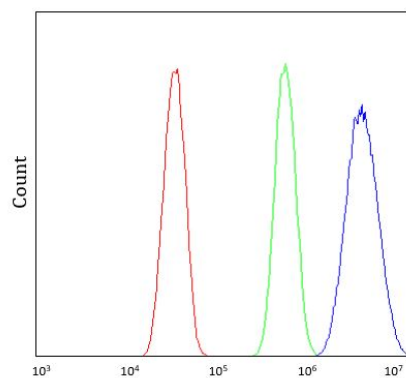
ARG45202 anti-LSM5 antibody FACS image

Flow Cytometry: A431 stained with ARG45202 anti-LSM5 antibody at 1 $\mu\text{g}/10^6$ cells dilution.



ARG45202 anti-LSM5 antibody IHC-P image

Immunohistochemistry: Rat liver stained with ARG45202 anti-LSM5 antibody at 2 $\mu\text{g}/\text{ml}$ dilution.



ARG45202 anti-LSM5 antibody FACS image

Flow Cytometry: HEPA1-6 stained with ARG45202 anti-LSM5 antibody at 1 $\mu\text{g}/10^6$ cells dilution.