

ARG45209 anti-CBX2 antibody

Package: 50 µg
Store at: -20°C

Summary

Product Description	Rabbit Polyclonal antibody recognizes CBX2
Tested Reactivity	Hu, Ms
Tested Application	ICC/IF, IHC-P, WB
Host	Rabbit
Clonality	Polyclonal
Isotype	Rabbit IgG
Target Name	CBX2
Species	Human
Immunogen	Recombinant protein containing to human CBX2.
Conjugation	Un-conjugated
Alternate Names	CBX2; Chromobox protein homolog 2; CDCA6; M33; SRXY5

Application Instructions

Application table	Application	Dilution
	ICC/IF	5 µg/ml
	IHC-P	2-5 µg/ml
	WB	0.25-0.5 µg/ml
Application Note	* The dilutions indicate recommended starting dilutions and the optimal dilutions or concentrations should be determined by the scientist.	
Observed Size	56 kDa	

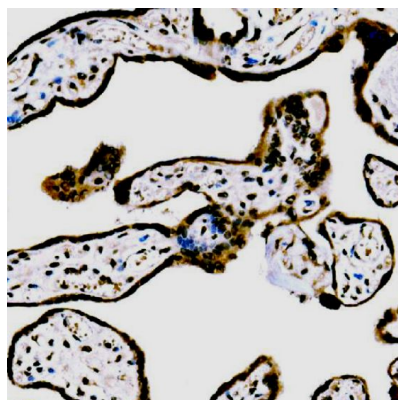
Properties

Form	Liquid
Purification	Affinity purification with immunogen.
Buffer	0.2% Na ₂ HPO ₄ , 0.9% NaCl and 4% Trehalose.
Stabilizer	4% Trehalose
Concentration	0.5 mg/ml
Storage instruction	For continuous use, store undiluted antibody at 2-8°C for up to a week. For long-term storage, aliquot and store at -20°C or below. Storage in frost free freezers is not recommended. Avoid repeated freeze/thaw cycles. Suggest spin the vial prior to opening. The antibody solution should be gently mixed before use.
Note	For laboratory research only, not for drug, diagnostic or other use.

Bioinformation

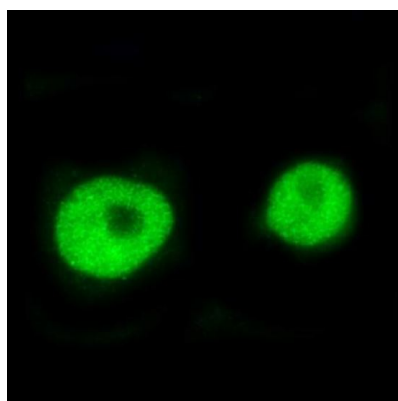
Gene Symbol	CBX2
Gene Full Name	chromobox homolog 2
Background	Chromobox protein homolog 2 is a protein that in humans is encoded by the CBX2 gene. This gene encodes a component of the polycomb multiprotein complex, which is required to maintain the transcriptionally repressive state of many genes throughout development via chromatin remodeling and modification of histones. Disruption of this gene in mice results in male-to-female gonadal sex reversal. Mutations in this gene are also associated with gonadal dysgenesis in humans. Alternatively spliced transcript variants encoding different isoforms have been noted for this gene.
Function	Component of a Polycomb group (PcG) multiprotein PRC1-like complex, a complex class required to maintain the transcriptionally repressive state of many genes, including Hox genes, throughout development. [UniProt]
Calculated Mw	56 kDa
PTM	Isopeptide bond; Methylation; Phosphoprotein; Ubl conjugation. [UniProt]
Cellular Localization	Chromosome; Nucleus. [UniProt]

Images



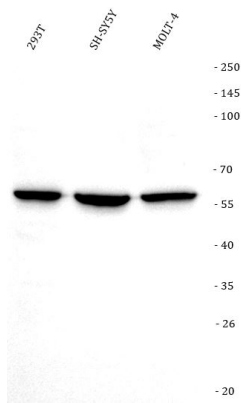
ARG45209 anti-CBX2 antibody IHC-P image

Immunohistochemistry: Human placenta stained with ARG45209 anti-CBX2 antibody at 2 µg/ml dilution.



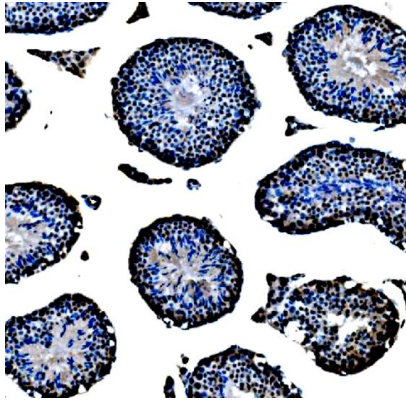
ARG45209 anti-CBX2 antibody ICC/IF image

Immunofluorescence: A431 stained with ARG45209 anti-CBX2 antibody at 5 µg/ml dilution.



ARG45209 anti-CBX2 antibody WB image

Western blot: 293T, SH-SY5Y, and MOLT-4 stained with ARG45209 anti-CBX2 antibody at 0.5 μ g/ml dilution.



ARG45209 anti-CBX2 antibody IHC-P image

Immunohistochemistry: Mouse testis stained with ARG45209 anti-CBX2 antibody at 2 μ g/ml dilution.