

## ARG45211 anti-DLX2 antibody

Package: 50 µg  
Store at: -20°C

### Summary

Product Description	Rabbit Polyclonal antibody recognizes DLX2
Tested Reactivity	Hu, Ms, Rat
Tested Application	FACS, IHC-P, WB
Host	Rabbit
Clonality	Polyclonal
Isotype	Rabbit IgG
Target Name	DLX2
Species	Human
Immunogen	Recombinant protein containing to human DLX2.
Conjugation	Un-conjugated
Alternate Names	DLX2; Distal-Less Homeobox 2; TES-1; Distal-Less Homeo Box 2; Homeobox Protein DLX-2; TES1

### Application Instructions

Application table	Application	Dilution
	FACS	1 - 3 µg/10 <sup>6</sup> cells
	IHC-P	2-5 µg/ml
	WB	0.25-0.5 µg/ml
Application Note	* The dilutions indicate recommended starting dilutions and the optimal dilutions or concentrations should be determined by the scientist.	
Observed Size	37 kDa	

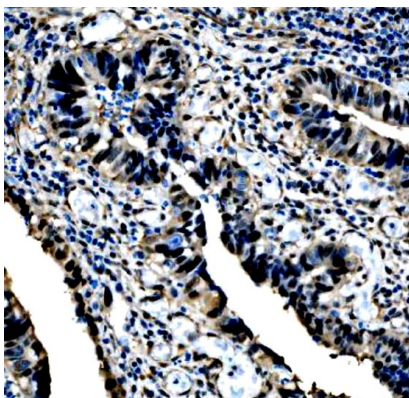
### Properties

Form	Liquid
Purification	Affinity purification with immunogen.
Buffer	0.2% Na <sub>2</sub> HPO <sub>4</sub> , 0.9% NaCl and 4% Trehalose.
Stabilizer	4% Trehalose
Concentration	0.5 mg/ml
Storage instruction	For continuous use, store undiluted antibody at 2-8°C for up to a week. For long-term storage, aliquot and store at -20°C or below. Storage in frost free freezers is not recommended. Avoid repeated freeze/thaw cycles. Suggest spin the vial prior to opening. The antibody solution should be gently mixed before use.
Note	For laboratory research only, not for drug, diagnostic or other use.

## Bioinformation

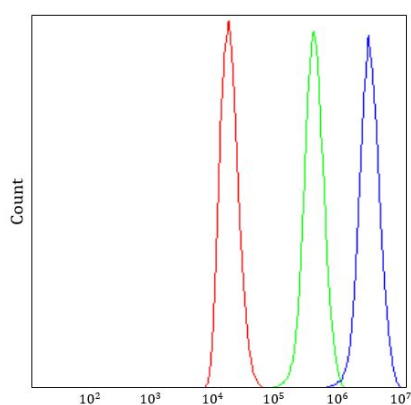
Gene Symbol	DLX2
Gene Full Name	Distal-Less Homeobox 2
Background	Many vertebrate homeo box-containing genes have been identified on the basis of their sequence similarity with Drosophila developmental genes. Members of the Dlx gene family contain a homeobox that is related to that of Distal-less (Dll), a gene expressed in the head and limbs of the developing fruit fly. The Distal-less (Dlx) family of genes comprises at least 6 different members, DLX1-DLX6. The DLX proteins are postulated to play a role in forebrain and craniofacial development. This gene is located in a tail-to-tail configuration with another member of the gene family on the long arm of chromosome 2. [provided by RefSeq, Jul 2008]
Function	Acts as a transcriptional activator. [UniProt]
Calculated Mw	37 kDa
PTM	Phosphoprotein. [UniProt]
Cellular Localization	Nucleus. [UniProt]

## Images



ARG45211 anti-DLX2 antibody IHC-P image

Immunohistochemistry: Human rectum stained with ARG45211 anti-DLX2 antibody at 2 µg/ml dilution.



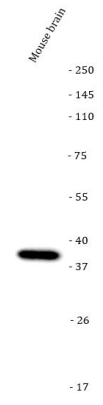
ARG45211 anti-DLX2 antibody FACS image

Flow Cytometry: 293T stained with ARG45211 anti-DLX2 antibody at 1 µg/10<sup>6</sup> cells dilution.



#### ARG45211 anti-DLX2 antibody WB image

Western blot: Rat brain stained with ARG45211 anti-DLX2 antibody at 0.5  $\mu$ g/ml dilution.



#### ARG45211 anti-DLX2 antibody WB image

Western blot: Mouse brain stained with ARG45211 anti-DLX2 antibody at 0.5  $\mu$ g/ml dilution.