

ARG45216 anti-SnoN / SNO antibody

Package: 50 µg
Store at: -20°C

Summary

Product Description	Rabbit Polyclonal antibody recognizes SnoN / SNO
Tested Reactivity	Hu, Ms, Rat
Tested Application	FACS, ICC/IF, IHC-P, WB
Host	Rabbit
Clonality	Polyclonal
Isotype	Rabbit IgG
Target Name	SnoN / SNO
Species	Human
Immunogen	Recombinant protein containing to human SnoN/SNO/SKIL.
Conjugation	Un-conjugated
Alternate Names	SKIL; SKI Like Proto-Oncogene; SNO; SnoN; SnoA; SKI-Like Oncogene; Ski-Like Protein; Ski-Related Oncogene SnoN; Ski-Related Oncogene; Ski-Related Protein; SnoI

Application Instructions

Application table	Application	Dilution
	FACS	1 - 3 µg/10 ⁶ cells
	ICC/IF	5 µg/ml
	IHC-P	2-5 µg/ml
	WB	0.25-0.5 µg/ml
Application Note	* The dilutions indicate recommended starting dilutions and the optimal dilutions or concentrations should be determined by the scientist.	
Observed Size	77 kDa	

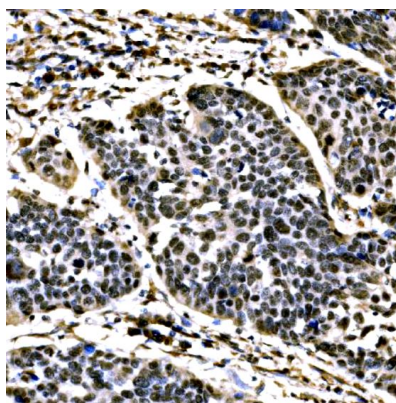
Properties

Form	Liquid
Purification	Affinity purification with immunogen.
Buffer	0.2% Na ₂ HPO ₄ , 0.9% NaCl and 4% Trehalose.
Stabilizer	4% Trehalose
Concentration	0.5 mg/ml
Storage instruction	For continuous use, store undiluted antibody at 2-8°C for up to a week. For long-term storage, aliquot and store at -20°C or below. Storage in frost free freezers is not recommended. Avoid repeated freeze/thaw cycles. Suggest spin the vial prior to opening. The antibody solution should be gently mixed before use.

Bioinformation

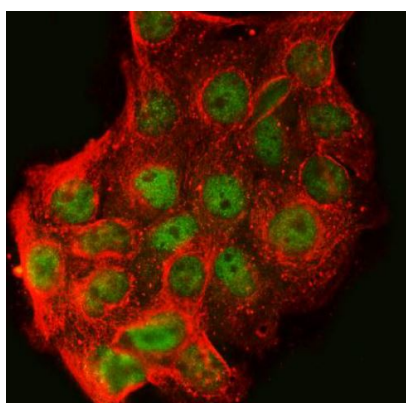
Gene Symbol	SKIL
Gene Full Name	SKI Like Proto-Oncogen
Background	The protein encoded by this gene is a component of the SMAD pathway, which regulates cell growth and differentiation through transforming growth factor-beta (TGFB). In the absence of ligand, the encoded protein binds to the promoter region of TGFB-responsive genes and recruits a nuclear repressor complex. TGFB signaling causes SMAD3 to enter the nucleus and degrade this protein, allowing these genes to be activated. Four transcript variants encoding three different isoforms have been found for this gene. [provided by RefSeq, Oct 2011]
Function	May have regulatory role in cell division or differentiation in response to extracellular signals.. [UniProt]
Calculated Mw	76 kDa
PTM	Isopeptide bond; Phosphoprotein; Ubl conjugation. [UniProt]
Cellular Localization	acrosomal vesicle; cytoplasm; nucleoplasm; PML body . [UniProt] Nucleus . [UniProt]

Images



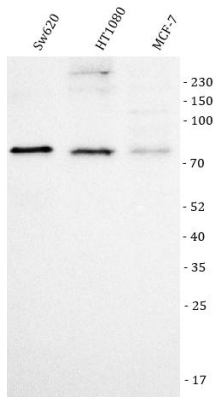
ARG45216 anti-SnoN / SNO antibody IHC-P image

Immunohistochemistry: Human esophageal squamous carcinoma stained with ARG45216 anti-SnoN / SNO antibody at 2 µg/ml dilution.



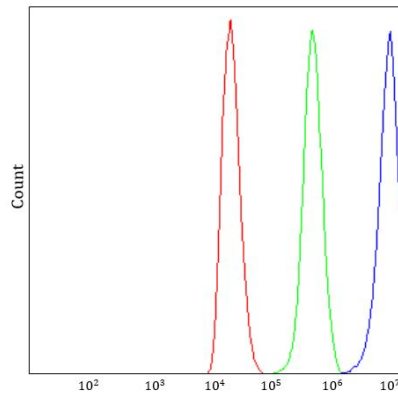
ARG45216 anti-SnoN / SNO antibody ICC/IF image

Immunofluorescence: A431 stained with ARG45216 anti-SnoN / SNO antibody at 5 ug/ml dilution.



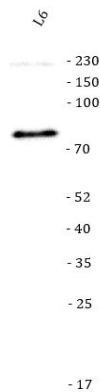
ARG45216 anti-SnoN / SNO antibody WB image

Western blot: Sw620, HT1080, and MCF-7 stained with ARG45216 anti-SnoN / SNO antibody at 0.5 µg/ml dilution.



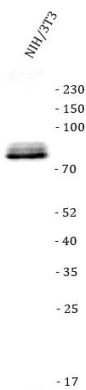
ARG45216 anti-SnoN / SNO antibody FACS image

Flow Cytometry: 293T stained with ARG45216 anti-SnoN / SNO antibody at 1 µg/10⁶ cells dilution.



ARG45216 anti-SnoN / SNO antibody WB image

Western blot: L6 stained with ARG45216 anti-SnoN / SNO antibody at 0.5 µg/ml dilution.



ARG45216 anti-SnoN / SNO antibody WB image

Western blot: NIH/3T3 stained with ARG45216 anti-SnoN / SNO antibody at 0.5 µg/ml dilution.