

## ARG45220 anti-WAPL / FOE antibody

Package: 50 µg  
Store at: -20°C

### Summary

Product Description	Rabbit Polyclonal antibody recognizes WAPL / FOE
Tested Reactivity	Hu, Ms, Rat
Tested Application	FACS, ICC/IF, IHC-P, WB
Host	Rabbit
Clonality	Polyclonal
Isotype	Rabbit IgG
Target Name	WAPL / FOE
Species	Human
Immunogen	Recombinant protein containing to human WAPL / FOE.
Conjugation	Un-conjugated
Alternate Names	WAPL; WAPL Cohesin Release Factor; KIAA0261; FOE; WAPAL; Wings Apart-Like Protein Homolog; Friend Of EBNA2 Protein; Friend Of EBNA2 (Epstein-Barr Virus Nuclear Protein 2); Wings Apart-Like Homolog (Drosophila); Friend Of EBNA2

### Application Instructions

Application table	Application	Dilution
	FACS	1 - 3 µg/10 <sup>6</sup> cells
	ICC/IF	5 µg/ml
	IHC-P	2-5 µg/ml
	WB	0.25-0.5 µg/ml
Application Note	* The dilutions indicate recommended starting dilutions and the optimal dilutions or concentrations should be determined by the scientist.	
Observed Size	180 kDa	

### Properties

Form	Liquid
Purification	Affinity purification with immunogen.
Buffer	0.2% Na <sub>2</sub> HPO <sub>4</sub> , 0.9% NaCl and 4% Trehalose.
Stabilizer	4% Trehalose
Concentration	0.5 mg/ml
Storage instruction	For continuous use, store undiluted antibody at 2-8°C for up to a week. For long-term storage, aliquot and store at -20°C or below. Storage in frost free freezers is not recommended. Avoid repeated freeze/thaw cycles. Suggest spin the vial prior to opening. The antibody solution should be gently mixed

before use.

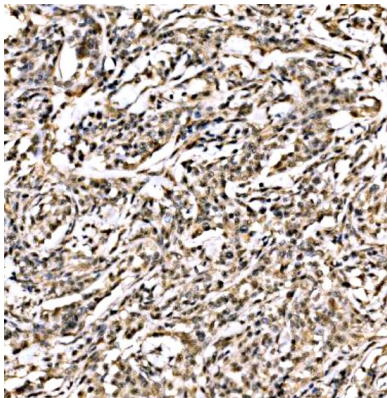
Note

For laboratory research only, not for drug, diagnostic or other use.

## Bioinformation

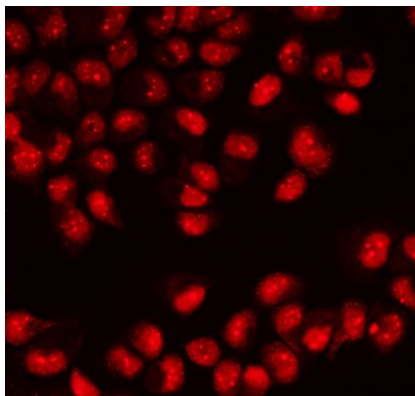
Gene Symbol	WAPL
Gene Full Name	WAPL Cohesin Release Factor
Background	Enables ATP-dependent protein-DNA unloader activity. Involved in several processes, including mitotic sister chromatid segregation; negative regulation of DNA replication; and negative regulation of sister chromatid cohesion. Located in several cellular components, including intercellular bridge; mitotic spindle; and nucleoplasm. [provided by Alliance of Genome Resources, Nov 2024]
Function	Regulator of sister chromatid cohesion in mitosis which negatively regulates cohesin association with chromatin. [UniProt]
Calculated Mw	133 kDa
PTM	Acetylation; Phosphoprotein. [UniProt]
Cellular Localization	Chromosome; Cytoplasm; Nucleus. [UniProt]

## Images



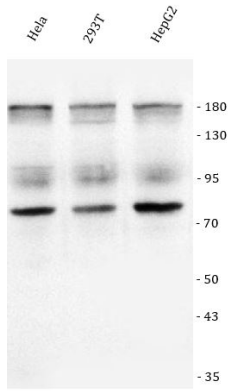
ARG45220 anti-WAPL / FOE antibody IHC-P image

Immunohistochemistry: Human lymphoma stained with ARG45220 anti-WAPL / FOE antibody at 2 µg/ml dilution.



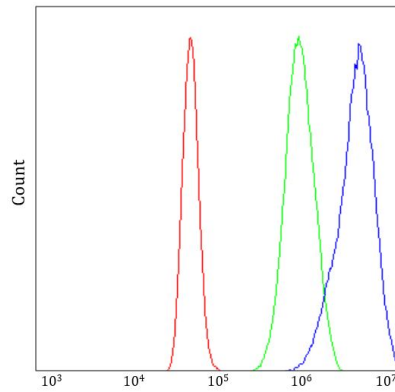
ARG45220 anti-WAPL / FOE antibody ICC/IF image

Immunofluorescence: T-47D stained with ARG45220 anti-WAPL / FOE antibody at 5 µg/ml dilution.



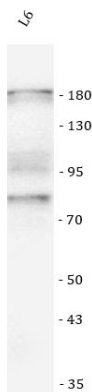
#### ARG45220 anti-WAPL / FOE antibody WB image

Western blot: HeLa, 293T, and HepG2\_x000D\_ stained with ARG45220 anti-WAPL / FOE antibody at 0.5  $\mu\text{g}/\text{ml}$  dilution.



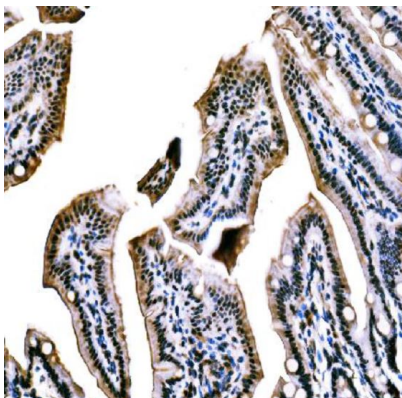
#### ARG45220 anti-WAPL / FOE antibody FACS image

Flow Cytometry: A431 stained with ARG45220 anti-WAPL / FOE antibody at 1  $\mu\text{g}/10^6$  cells dilution.



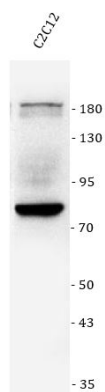
#### ARG45220 anti-WAPL / FOE antibody WB image

Western blot: L6 stained with ARG45220 anti-WAPL / FOE antibody at 0.5  $\mu\text{g}/\text{ml}$  dilution.



#### ARG45220 anti-WAPL / FOE antibody IHC-P image

Immunohistochemistry: Mouse colon stained with ARG45220 anti-WAPL / FOE antibody at 2  $\mu\text{g}/\text{ml}$  dilution.



#### ARG45220 anti-WAPL / FOE antibody WB image

Western blot: C2C12 stained with ARG45220 anti-WAPL / FOE antibody at 0.5 µg/ml dilution.