

ARG45221 anti-PP11 antibody

Package: 50 µg
Store at: -20°C

Summary

Product Description	Rabbit Polyclonal antibody recognizes PP11
Tested Reactivity	Hu
Tested Application	FACS, ICC/IF, IHC-P, WB
Host	Rabbit
Clonality	Polyclonal
Isotype	Rabbit IgG
Target Name	PP11
Species	Human
Immunogen	Recombinant protein containing to human ENDOU.
Conjugation	Un-conjugated
Alternate Names	ENDO; Endonuclease, Poly(U) Specific; PP11; PRSS26; P11; Uridylate-Specific Endoribonuclease; Endonuclease, PolyU-Specific; Placental Protein 11; Protein EndoU; Poly(U)-Specific Endoribonuclease; 22 Serine Protease; 26 Serine Protease; EC 4.6.1.-

Application Instructions

Application table	Application	Dilution
	FACS	1 - 3 µg/10 ⁶ cells
	ICC/IF	5 µg/ml
	IHC-P	2-5 µg/ml
	WB	0.25-0.5 µg/ml
Application Note	* The dilutions indicate recommended starting dilutions and the optimal dilutions or concentrations should be determined by the scientist.	
Observed Size	47 kDa	

Properties

Form	Liquid
Purification	Affinity purification with immunogen.
Buffer	0.2% Na ₂ HPO ₄ , 0.9% NaCl and 4% Trehalose.
Stabilizer	4% Trehalose
Concentration	0.5 mg/ml
Storage instruction	For continuous use, store undiluted antibody at 2-8°C for up to a week. For long-term storage, aliquot and store at -20°C or below. Storage in frost free freezers is not recommended. Avoid repeated freeze/thaw cycles. Suggest spin the vial prior to opening. The antibody solution should be gently mixed

before use.

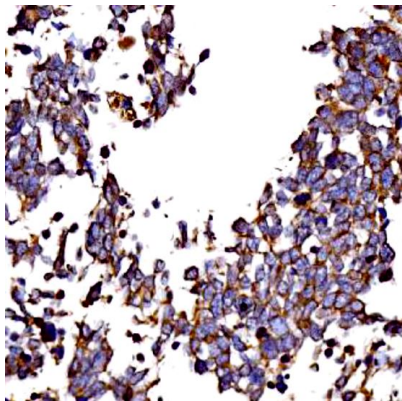
Note

For laboratory research only, not for drug, diagnostic or other use.

Bioinformation

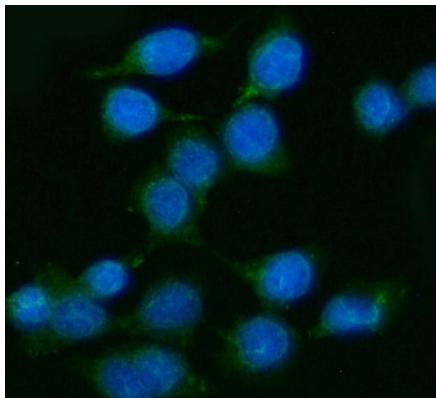
Gene Symbol	ENDOU
Gene Full Name	Endonuclease, Poly(U) Specific
Background	This gene encodes a protein with endoribonuclease activity that binds polyuridine-enriched single-stranded RNA. This gene was initially characterized based on its high expression in placenta but was mischaracterized as a serine protease. In mouse, this gene promotes tolerance to self-antigens by regulating B cell activation-induced cell death (AICD). The protein may be useful as a tumor marker. Multiple alternatively spliced transcript variants encoding distinct protein isoforms have been found for this gene. [provided by RefSeq, Jul 2020]
Function	Endoribonuclease that cleaves single-stranded RNAs at 5' of uridylates and releases a product with a 2',3'-cyclic phosphate at the 3'-end. The UU and GU sites are more efficiently cleaved than CU and AU sites. [UniProt]
Calculated Mw	47 kDa
PTM	Disulfide bond. [UniProt]
Cellular Localization	Secreted. [UniProt]

Images



ARG45221 anti-PP11 antibody IHC-P image

Immunohistochemistry: Human lung cancer stained with ARG45221 anti-PP11 antibody at 2 µg/ml dilution.



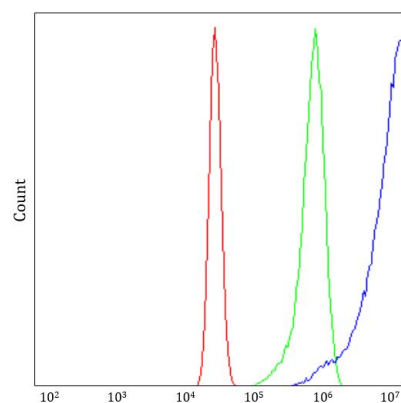
ARG45221 anti-PP11 antibody ICC/IF image

Immunofluorescence: Caco-2 stained with ARG45221 anti-PP11 antibody at 5 µg/ml dilution.



ARG45221 anti-PP11 antibody WB image

Western blot: Human placenta tissue stained with ARG45221 anti-PP11 antibody at 0.5 $\mu\text{g/ml}$ dilution.



ARG45221 anti-PP11 antibody FACS image

Flow Cytometry: U87 stained with ARG45221 anti-PP11 antibody at 1 $\mu\text{g}/10^6$ cells dilution.