

ARG45232 anti-SLC22A7 antibody

Package: 50 µg
Store at: -20°C

Summary

Product Description	Rabbit Polyclonal antibody recognizes SLC22A7
Tested Reactivity	Hu, Ms, Rat
Tested Application	FACS, IHC-P, WB
Host	Rabbit
Clonality	Polyclonal
Isotype	Rabbit IgG
Target Name	SLC22A7
Species	Human
Immunogen	Recombinant protein containing to human OAT2; SLC22A7.
Conjugation	Un-conjugated
Alternate Names	SLC22A7; Solute Carrier Family 22 Member 7; OAT2; NLT; Solute Carrier Family 22 (Organic Anion Transporter), Member 7; Organic Anion Transporter 2; Novel Liver Transporter; HOAT2; Organic Anion Transporter 1; Liver-Specific Transporter; HOAT11

Application Instructions

Application table	Application	Dilution
	FACS	1 - 3 µg/10 ⁶ cells
	IHC-P	2-5 µg/ml
	WB	0.25-0.5 µg/ml
Application Note	* The dilutions indicate recommended starting dilutions and the optimal dilutions or concentrations should be determined by the scientist.	
Observed Size	60 kDa	

Properties

Form	Liquid
Purification	Affinity purification with immunogen.
Buffer	0.2% Na ₂ HPO ₄ , 0.9% NaCl and 4% Trehalose.
Stabilizer	4% Trehalose
Concentration	0.5 mg/ml
Storage instruction	For continuous use, store undiluted antibody at 2-8°C for up to a week. For long-term storage, aliquot and store at -20°C or below. Storage in frost free freezers is not recommended. Avoid repeated freeze/thaw cycles. Suggest spin the vial prior to opening. The antibody solution should be gently mixed before use.

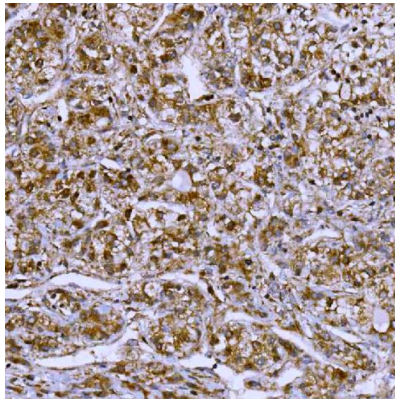
Note

For laboratory research only, not for drug, diagnostic or other use.

Bioinformation

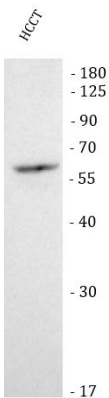
Gene Symbol	SLC22A7
Gene Full Name	Solute Carrier Family 22 Member 7
Background	The protein encoded by this gene is involved in the sodium-independent transport and excretion of organic anions, some of which are potentially toxic. The encoded protein is an integral membrane protein and appears to be localized to the basolateral membrane of the kidney. Alternatively spliced transcript variants encoding different isoforms have been described. [provided by RefSeq, Jul 2008]
Function	Functions as a Na+-independent bidirectional multispecific transporter. [UniProt]
Calculated Mw	60 kDa
PTM	Glycoprotein. [UniProt]
Cellular Localization	Cell membrane; Cytoplasm; Membrane. [UniProt]

Images



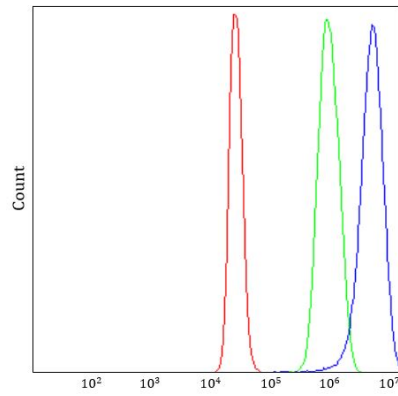
ARG45232 anti-SLC22A7 antibody IHC-P image

Immunohistochemistry: Human liver cancer stained with ARG45232 anti-SLC22A7 antibody at 2 µg/ml dilution.



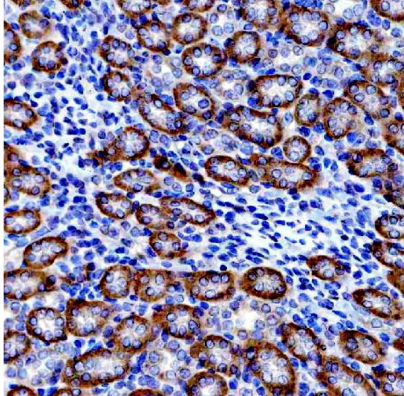
ARG45232 anti-SLC22A7 antibody WB image

Western blot: HCCT stained with ARG45232 anti-SLC22A7 antibody at 0.5 µg/ml dilution.



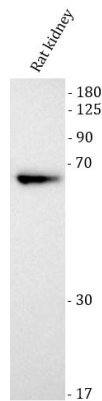
ARG45232 anti-SLC22A7 antibody FACS image

Flow Cytometry: HepG2 stained with ARG45232 anti-SLC22A7 antibody at $1 \mu\text{g}/10^6$ cells dilution.



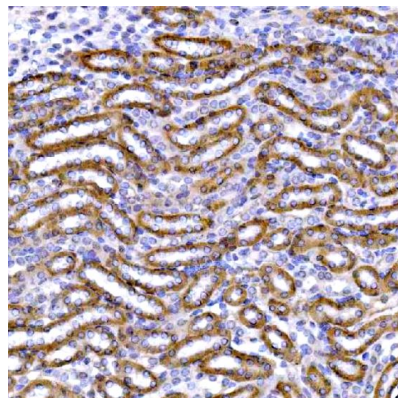
ARG45232 anti-SLC22A7 antibody IHC-P image

Immunohistochemistry: Rat kidney stained with ARG45232 anti-SLC22A7 antibody at $2 \mu\text{g}/\text{ml}$ dilution.



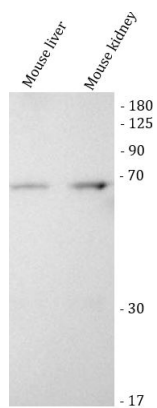
ARG45232 anti-SLC22A7 antibody WB image

Western blot: Rat kidney stained with ARG45232 anti-SLC22A7 antibody at $0.5 \mu\text{g}/\text{ml}$ dilution.



ARG45232 anti-SLC22A7 antibody IHC-P image

Immunohistochemistry: Mouse kidney stained with ARG45232 anti-SLC22A7 antibody at $2 \mu\text{g}/\text{ml}$ dilution.



ARG45232 anti-SLC22A7 antibody WB image

Western blot: Mouse liver and mouse kidney stained with ARG45232 anti-SLC22A7 antibody at 0.5 µg/ml dilution.