

ARG45246 anti-FIP1L1 antibody

Package: 50 µg
Store at: -20°C

Summary

Product Description	Polyclonal antibody recognizes FIP1L1
Tested Reactivity	Hu, Ms, Rat
Tested Application	FACS, ICC/IF, IHC-P, WB
Host	Rabbit
Clonality	Polyclonal
Isotype	Rabbit IgG
Target Name	FIP1L1
Species	Human
Immunogen	Recombinant protein containing to human FIP1L1.
Conjugation	Un-conjugated
Alternate Names	FIP1L1; Factor Interacting With PAPOLA And CPSF1; HFip1; FIP1; FIP1L1 Cleavage And Polyadenylation Specific Factor Subunit; Pre-mRNA 3'-End-Processing Factor FIP1; Rearranged In Hypereosinophilia; Factor Interacting With PAP; FIP1-Like 1 Protein; DKFZp586K0717; FIP1 Like 1 (S. Cerevisiae); FIP1 Like 1; EC 4.2.1.33; EC 1.1.1.86; Rhe; RHE

Application Instructions

Application table	Application	Dilution
	FACS	1 - 3 µg/10 ⁶ cells
	ICC/IF	5 µg/ml
	IHC-P	2-5 µg/ml
	WB	0.25-0.5 µg/ml
Application Note	* The dilutions indicate recommended starting dilutions and the optimal dilutions or concentrations should be determined by the scientist.	
Observed Size	72 kDa	

Properties

Form	Liquid
Purification	Affinity purification with immunogen.
Buffer	0.2% Na ₂ HPO ₄ , 0.9% NaCl and 4% Trehalose.
Stabilizer	4% Trehalose
Concentration	0.5 mg/ml
Storage instruction	For continuous use, store undiluted antibody at 2-8°C for up to a week. For long-term storage, aliquot and store at -20°C or below. Storage in frost free freezers is not recommended. Avoid repeated

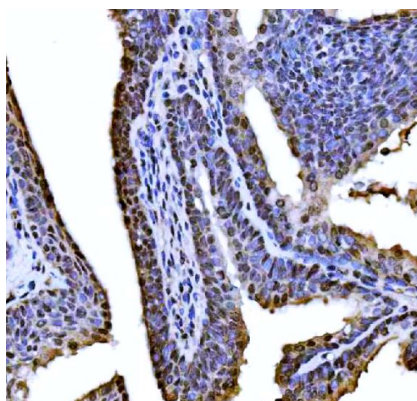
freeze/thaw cycles. Suggest spin the vial prior to opening. The antibody solution should be gently mixed before use.

Note For laboratory research only, not for drug, diagnostic or other use.

Bioinformation

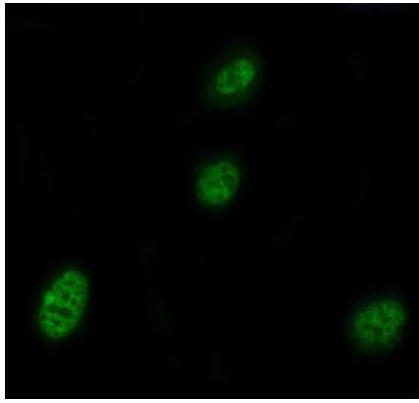
Gene Symbol	FIP1L1
Gene Full Name	Factor Interacting With PAPOLA And CPSF1
Background	This gene encodes a subunit of the CPSF (cleavage and polyadenylation specificity factor) complex that polyadenylates the 3' end of mRNA precursors. This gene, the homolog of yeast Fip1 (factor interacting with PAP), binds to U-rich sequences of pre-mRNA and stimulates poly(A) polymerase activity. Its N-terminus contains a PAP-binding site and its C-terminus an RNA-binding domain. An interstitial chromosomal deletion on 4q12 creates an in-frame fusion of human genes FIP1L1 and PDGFRA (platelet-derived growth factor receptor, alpha). The FIP1L1-PDGFR fusion gene encodes a constitutively activated tyrosine kinase that joins the first 233 amino acids of FIP1L1 to the last 523 amino acids of PDGFRA. This gene fusion and chromosomal deletion is the cause of some forms of idiopathic hypereosinophilic syndrome (HES). This syndrome, recently reclassified as chronic eosinophilic leukemia (CEL), is responsive to treatment with tyrosine kinase inhibitors. Alternative splicing results in multiple transcript variants encoding distinct isoforms. [provided by RefSeq, Oct 2008]
Function	Component of the cleavage and polyadenylation specificity factor (CPSF) complex that plays a key role in pre-mRNA 3'-end formation, recognizing the AAUAAA signal sequence and interacting with poly(A) polymerase and other factors to bring about cleavage and poly(A) addition. FIP1L1 contributes to poly(A) site recognition and stimulates poly(A) addition. Binds to U-rich RNA sequence elements surrounding the poly(A) site. May act to tether poly(A) polymerase to the CPSF complex. [UniProt]
Calculated Mw	67 kDa
PTM	Phosphoprotein. [UniProt]
Cellular Localization	Nucleus. [UniProt]

Images



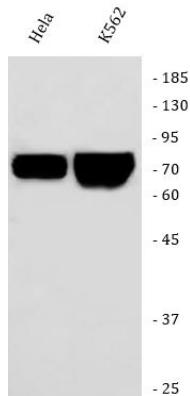
ARG45246 anti-FIP1L1 antibody IHC-P image

Immunohistochemistry: Human prostate cancer stained with ARG45246 anti-FIP1L1 antibody at 2 µg/ml dilution.



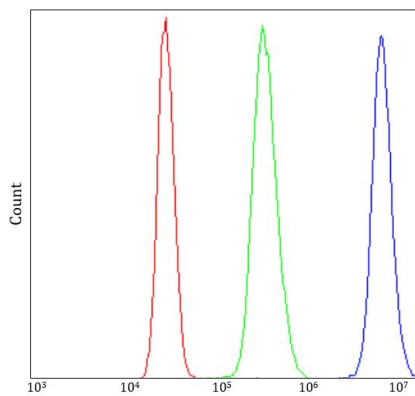
ARG45246 anti-FIP1L1 antibody ICC/IF image

Immunofluorescence: U87 stained with ARG45246 anti-FIP1L1 antibody at 5 ug/ml dilution.



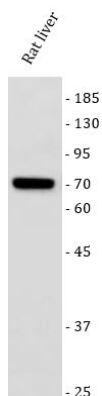
ARG45246 anti-FIP1L1 antibody WB image

Western blot: HeLa and K562 stained with ARG45246 anti-FIP1L1 antibody at 0.5 μ g/ml dilution.



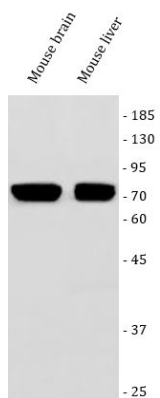
ARG45246 anti-FIP1L1 antibody FACS image

Flow Cytometry: HepG2 stained with ARG45246 anti-FIP1L1 antibody at 1 μ g/ 10^6 cells dilution.



ARG45246 anti-FIP1L1 antibody WB image

Western blot: Rat liver stained with ARG45246 anti-FIP1L1 antibody at 0.5 μ g/ml dilution.



ARG45246 anti-FIP1L1 antibody WB image

Western blot: Mouse brain and mouse liver stained with ARG45246 anti-FIP1L1 antibody at 0.5 µg/ml dilution.