

ARG45250 anti-TIGD1 / EEYORE antibody

Package: 50 µg
Store at: -20°C

Summary

Product Description	Polyclonal antibody recognizes TIGD1 / EEYORE
Tested Reactivity	Hu, Ms, Rat
Tested Application	FACS, ICC/IF, IHC-P, WB
Host	Rabbit
Clonality	Polyclonal
Isotype	Rabbit IgG
Target Name	TIGD1 / EEYORE
Species	Human
Immunogen	Recombinant protein containing to human TIGD1 / EEYORE.
Conjugation	Un-conjugated
Alternate Names	TIGD1; EEYORE; tigger transposable element derived 1; jerky (mouse) homolog-like; hypothetical protein LOC200765; jerky homolog-like

Application Instructions

Application table	Application	Dilution
	FACS	1 - 3 µg/10 ⁶ cells
	ICC/IF	5 µg/ml
	IHC-P	2-5 µg/ml
	WB	0.25-0.5 µg/ml
Application Note	* The dilutions indicate recommended starting dilutions and the optimal dilutions or concentrations should be determined by the scientist.	
Observed Size	68-70 kDa	

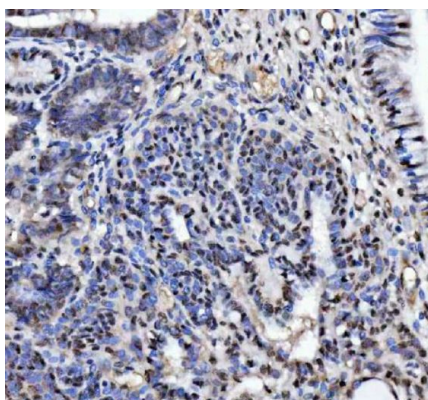
Properties

Form	Liquid
Purification	Affinity purification with immunogen.
Buffer	0.2% Na ₂ HPO ₄ , 0.9% NaCl and 4% Trehalose.
Stabilizer	4% Trehalose
Concentration	0.5 mg/ml
Storage instruction	For continuous use, store undiluted antibody at 2-8°C for up to a week. For long-term storage, aliquot and store at -20°C or below. Storage in frost free freezers is not recommended. Avoid repeated freeze/thaw cycles. Suggest spin the vial prior to opening. The antibody solution should be gently mixed before use.

Bioinformation

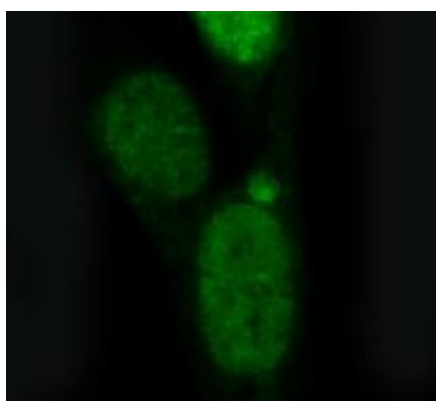
Gene Symbol	TIGD1
Gene Full Name	Tigger Transposable Element Derived 1
Background	The protein encoded by this gene belongs to the tigger subfamily of the pogo superfamily of DNA-mediated transposons in humans. These proteins are related to DNA transposons found in fungi and nematodes, and more distantly to the Tc1 and mariner transposases. They are also very similar to the major mammalian centromere protein B. The exact function of this gene is not known. [provided by RefSeq, Jul 2008]
Calculated Mw	67 kDa
Cellular Localization	Nucleus . [UniProt]

Images



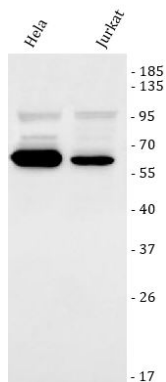
ARG45250 anti-TIGD1 / EEYORE antibody IHC-P image

Immunohistochemistry: Human cervical cancer stained with ARG45250 anti-TIGD1 / EEYORE antibody at 2 µg/ml dilution.



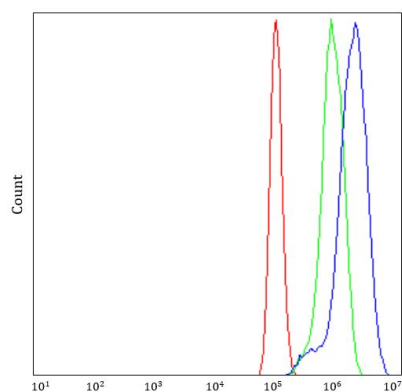
ARG45250 anti-TIGD1 / EEYORE antibody ICC/IF image

Immunofluorescence: U2OS stained with ARG45250 anti-TIGD1 / EEYORE antibody at 5 ug/ml dilution.



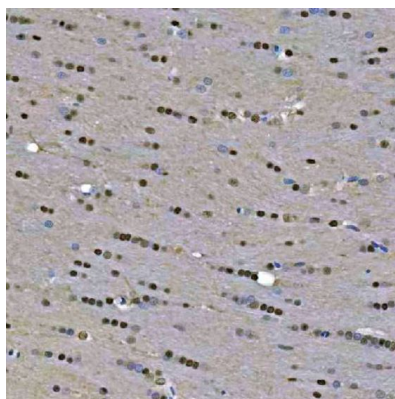
ARG45250 anti-TIGD1 / EEYORE antibody WB image

Western blot: HeLa and Jurkat stained with ARG45250 anti-TIGD1 / EEYORE antibody at 0.5 µg/ml dilution.



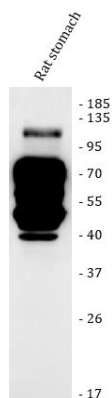
ARG45250 anti-TIGD1 / EEYORE antibody FACS image

Flow Cytometry: PC-3 stained with ARG45250 anti-TIGD1 / EEYORE antibody at 1 µg/10⁶ cells dilution.



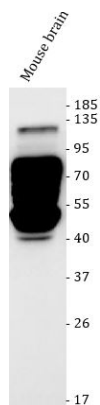
ARG45250 anti-TIGD1 / EEYORE antibody IHC-P image

Immunohistochemistry: Rat brain stained with ARG45250 anti-TIGD1 / EEYORE antibody at 2 µg/ml dilution.



ARG45250 anti-TIGD1 / EEYORE antibody WB image

Western blot: Rat stomach stained with ARG45250 anti-TIGD1 / EEYORE antibody at 0.5 µg/ml dilution.



ARG45250 anti-TIGD1 / EEYORE antibody WB image

Western blot: Mouse brain stained with ARG45250 anti-TIGD1 / EEYORE antibody at 0.5 µg/ml dilution.