

ARG45256 anti-TPP2 antibody

Package: 50 µg
Store at: -20°C

Summary

Product Description	Polyclonal antibody recognizes TPP2
Tested Reactivity	Hu, Ms, Rat
Tested Application	FACS, ICC/IF, IHC-P, WB
Host	Rabbit
Clonality	Polyclonal
Isotype	Rabbit IgG
Target Name	TPP2
Species	Human
Immunogen	Recombinant protein containing to human TPP2.
Conjugation	Un-conjugated
Alternate Names	Tripeptidyl peptidase II; TPP2; Tripeptidyl Peptidase 2; TPPII; Tripeptidyl Aminopeptidase; Tripeptidyl-Peptidase II; Tripeptidyl-Peptidase 2; EC 3.4.14.10; TPP-II; TPP-2; Tripeptidyl Peptidase II; IMD78; TPPII

Application Instructions

Application table	Application	Dilution
	FACS	1 - 3 µg/10 ⁶ cells
	ICC/IF	5 µg/ml
	IHC-P	2-5 µg/ml
	WB	0.1-0.25 µg/ml
Application Note	* The dilutions indicate recommended starting dilutions and the optimal dilutions or concentrations should be determined by the scientist.	
Observed Size	138 kDa	

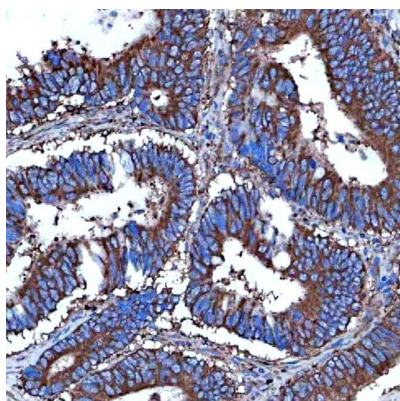
Properties

Form	Liquid
Purification	Affinity purification with immunogen.
Buffer	0.2% Na ₂ HPO ₄ , 0.9% NaCl and 4% Trehalose.
Stabilizer	4% Trehalose
Concentration	0.5 mg/ml
Storage instruction	For continuous use, store undiluted antibody at 2-8°C for up to a week. For long-term storage, aliquot and store at -20°C or below. Storage in frost free freezers is not recommended. Avoid repeated freeze/thaw cycles. Suggest spin the vial prior to opening. The antibody solution should be gently mixed before use.

Bioinformation

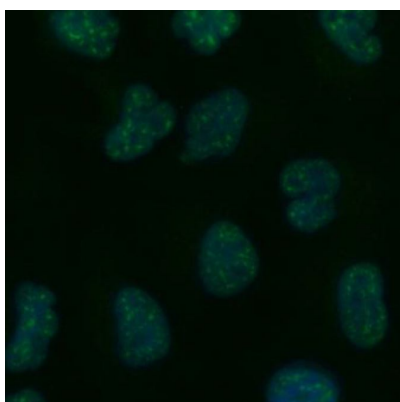
Gene Symbol	TPP2
Gene Full Name	Tripeptidyl Peptidase 2
Background	Tripeptidyl-peptidase 2 is an enzyme that in humans is encoded by the TPP2 gene. This gene encodes a mammalian peptidase that, at neutral pH, removes tripeptides from the N terminus of longer peptides. The protein has a specialized function that is essential for some MHC class I antigen presentation. The protein is a high molecular mass serine exopeptidase; the amino acid sequence surrounding the serine residue at the active site is similar to the peptidases of the subtilisin class rather than the trypsin class.. [provided by RefSeq, Jul 2008]
Function	Cytosolic tripeptidyl-peptidase that releases N-terminal tripeptides from polypeptides and is a component of the proteolytic cascade acting downstream of the 26S proteasome in the ubiquitin-proteasome pathway. [UniProt]
Calculated Mw	105 kDa
PTM	Acetylation; Phosphoprotein. [UniProt]
Cellular Localization	Nucleus; Cytoplasm. [UniProt]

Images



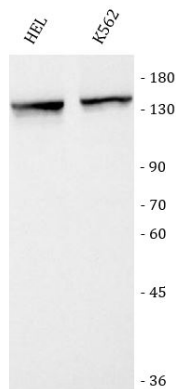
ARG45256 anti-TPP2 antibody IHC-P image

Immunohistochemistry: Human colorectal adenocarcinoma stained with ARG45256 anti-TPP2 antibody at 2 µg/ml dilution.



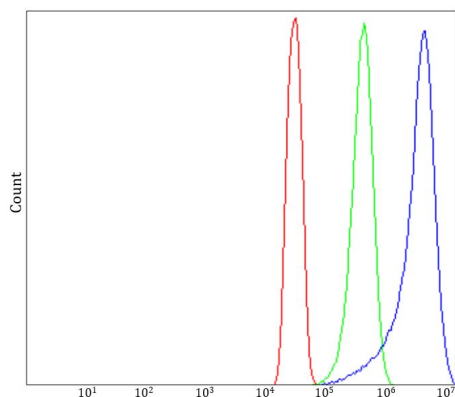
ARG45256 anti-TPP2 antibody ICC/IF image

Immunofluorescence: A549 stained with ARG45256 anti-TPP2 antibody at 5 µg/ml dilution.



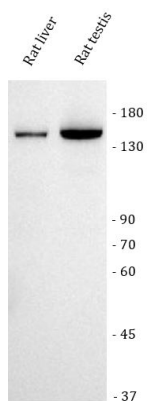
ARG45256 anti-TPP2 antibody WB image

Western blot: HEL and K562 stained with ARG45256 anti-TPP2 antibody at 0.5 $\mu\text{g}/\text{ml}$ dilution.



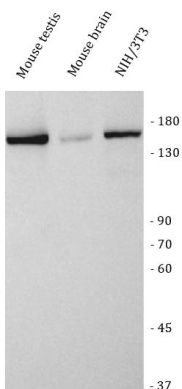
ARG45256 anti-TPP2 antibody FACS image

Flow Cytometry: SiHa stained with ARG45256 anti-TPP2 antibody at 1 $\mu\text{g}/10^6$ cells dilution.



ARG45256 anti-TPP2 antibody WB image

Western blot: Rat liver and rat testis stained with ARG45256 anti-TPP2 antibody at 0.5 $\mu\text{g}/\text{ml}$ dilution.



ARG45256 anti-TPP2 antibody WB image

Western blot: Mouse testis, mouse brain and NIH/3T3 stained with ARG45256 anti-TPP2 antibody at 0.5 $\mu\text{g}/\text{ml}$ dilution.