

## ARG45259 anti-WDR44 antibody

Package: 50 µg  
Store at: -20°C

### Summary

Product Description	Polyclonal antibody recognizes WDR44
Tested Reactivity	Hu
Tested Application	FACS, IHC-P, WB
Host	Rabbit
Clonality	Polyclonal
Isotype	Rabbit IgG
Target Name	WDR44
Species	Human
Immunogen	Recombinant protein containing to human WDR44.
Conjugation	Un-conjugated
Alternate Names	WDR44; WD Repeat Domain 44; RPH11; Rabphilin-11; RAB11BP; SYM-4; WD Repeat-Containing Protein 44; Rab11-Binding Protein; DKFZp686L20145; Rab11BP

### Application Instructions

Application table	Application	Dilution
	FACS	1 - 3 µg/10 <sup>6</sup> cells
	IHC-P	2-5 µg/ml
	WB	0.25-0.5 µg/ml
Application Note	* The dilutions indicate recommended starting dilutions and the optimal dilutions or concentrations should be determined by the scientist.	
Observed Size	130 kDa	

### Properties

Form	Liquid
Purification	Affinity purification with immunogen.
Buffer	0.2% Na <sub>2</sub> HPO <sub>4</sub> , 0.9% NaCl and 4% Trehalose.
Stabilizer	4% Trehalose
Concentration	0.5 mg/ml
Storage instruction	For continuous use, store undiluted antibody at 2-8°C for up to a week. For long-term storage, aliquot and store at -20°C or below. Storage in frost free freezers is not recommended. Avoid repeated freeze/thaw cycles. Suggest spin the vial prior to opening. The antibody solution should be gently mixed before use.

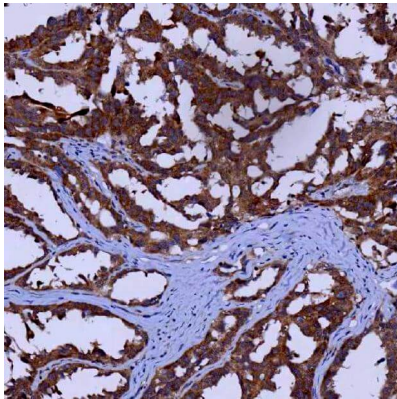
Note

For laboratory research only, not for drug, diagnostic or other use.

Bioinformation

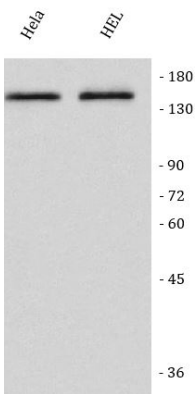
Gene Symbol	WDR44
Gene Full Name	WD Repeat Domain 44
Background	This gene encodes a protein that interacts with the small GTPase rab11. A similar protein in rat binds the GTP-containing active form of rab11. This protein may play a role in endosome recycling. Alternate splicing results in multiple transcript variants.[provided by RefSeq, May 2010]
Function	Downstream effector for Rab11 which regulates Rab11 intracellular membrane trafficking functions such as endocytic recycling, intracellular ciliogenesis and protein export. [UniProt]
Calculated Mw	101 kDa
PTM	Acetylation; Phosphoprotein. [UniProt]
Cellular Localization	Cytoplasm; Endosome; Golgi apparatus; Membrane. [UniProt]

Images



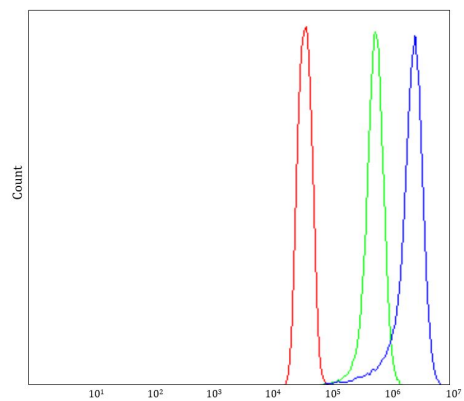
ARG45259 anti-WDR44 antibody IHC-P image

Immunohistochemistry: Human ovarian cancer stained with ARG45259 anti-WDR44 antibody at 2 µg/ml dilution.



ARG45259 anti-WDR44 antibody WB image

Western blot: Hela and HEL stained with ARG45259 anti-WDR44 antibody at 0.5 µg/ml dilution.



#### ARG45259 anti-WDR44 antibody FACS image

Flow Cytometry: SiHa stained with ARG45259 anti-WDR44 antibody at  $1 \mu\text{g}/10^6$  cells dilution.