

ARG45264 anti-SCO1 antibody

Package: 50 µg
Store at: -20°C

Summary

Product Description	Polyclonal antibody recognizes SCO1
Tested Reactivity	Hu
Tested Application	FACS, IHC-P, WB
Host	Rabbit
Clonality	Polyclonal
Isotype	Rabbit IgG
Target Name	SCO1
Species	Human
Immunogen	Recombinant protein containing to human SCO1.
Conjugation	Un-conjugated
Alternate Names	SCO1; Synthesis Of Cytochrome C Oxidase 1; SCOD1; SCO1, Cytochrome C Oxidase Assembly Protein; SCO Cytochrome C Oxidase Assembly Protein 1; Protein SCO1 Homolog, Mitochondrial; SCO (Cytochrome Oxidase Deficient, Yeast) Homolog 1; SCO Cytochrome Oxidase Deficient Homolog 1 (Yeast); SCO Cytochrome Oxidase Deficient Homolog 1; MC4DN4

Application Instructions

Application table	Application	Dilution
	FACS	1 - 3 µg/10 ⁶ cells
	IHC-P	2-5 µg/ml
	WB	0.25-0.5 µg/ml
Application Note	* The dilutions indicate recommended starting dilutions and the optimal dilutions or concentrations should be determined by the scientist.	
Observed Size	30 kDa	

Properties

Form	Liquid
Purification	Affinity purification with immunogen.
Buffer	0.2% Na ₂ HPO ₄ , 0.9% NaCl and 4% Trehalose.
Stabilizer	4% Trehalose
Concentration	0.5 mg/ml
Storage instruction	For continuous use, store undiluted antibody at 2-8°C for up to a week. For long-term storage, aliquot and store at -20°C or below. Storage in frost free freezers is not recommended. Avoid repeated freeze/thaw cycles. Suggest spin the vial prior to opening. The antibody solution should be gently mixed

before use.

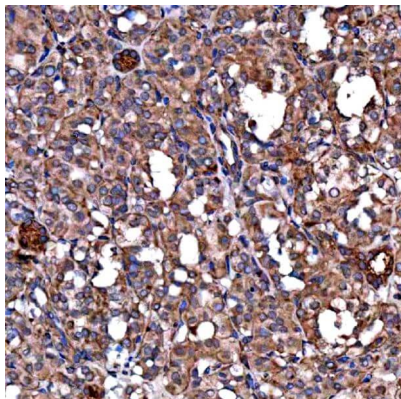
Note

For laboratory research only, not for drug, diagnostic or other use.

Bioinformation

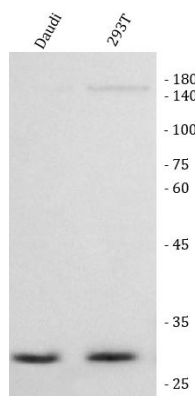
Gene Symbol	SCO1
Gene Full Name	Synthesis Of Cytochrome C Oxidase 1
Background	Mammalian cytochrome c oxidase (COX) catalyzes the transfer of reducing equivalents from cytochrome c to molecular oxygen and pumps protons across the inner mitochondrial membrane. In yeast, 2 related COX assembly genes, SCO1 and SCO2 (synthesis of cytochrome c oxidase), enable subunits 1 and 2 to be incorporated into the holoprotein. This gene is the human homolog to the yeast SCO1 gene. [provided by RefSeq, Jul 2008]
Function	Copper metallochaperone essential for the maturation of cytochrome c oxidase subunit II (MT-CO2/COX2). Not required for the synthesis of MT-CO2/COX2 but plays a crucial role in stabilizing MT-CO2/COX2 during its subsequent maturation. Involved in transporting copper to the Cu(A) site on MT-CO2/COX2. [UniProt]
Calculated Mw	34 kDa
PTM	Disulfide bond. [UniProt]
Cellular Localization	Membrane; Mitochondrion; Mitochondrion inner membrane. [UniProt]

Images



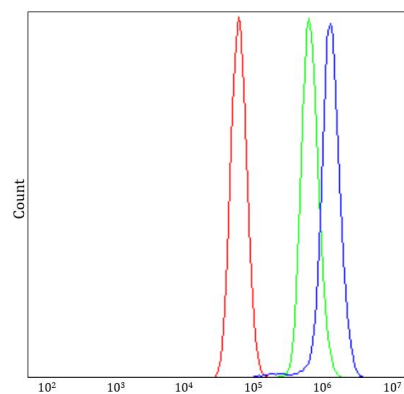
ARG45264 anti-SCO1 antibody IHC-P image

Immunohistochemistry: Human thyroid cancer stained with ARG45264 anti-SCO1 antibody at 2 µg/ml dilution.



ARG45264 anti-SCO1 antibody WB image

Western blot: Daudi and 293T stained with ARG45264 anti-SCO1 antibody at 0.5 µg/ml dilution.



ARG45264 anti-SCO1 antibody FACS image

Flow Cytometry: U87 stained with ARG45264 anti-SCO1 antibody at $1\text{ }\mu\text{g}/10^6$ cells dilution.