

ARG45270 anti-SGCE antibody

Package: 50 µg
Store at: -20°C

Summary

Product Description	Polyclonal antibody recognizes SGCE
Tested Reactivity	Hu, Ms, Rat
Tested Application	FACS, IHC-P, WB
Host	Rabbit
Clonality	Polyclonal
Isotype	Rabbit IgG
Target Name	SGCE
Species	Human
Immunogen	Recombinant protein containing to human SGCE.
Conjugation	Un-conjugated
Alternate Names	SGCE; Sarcoglycan Epsilon; Epsilon-Sarcoglycan; Epsilon-SG; DYT11; ESG; Dystonia 11, Myoclonic

Application Instructions

Application table	Application	Dilution
	FACS	1 - 3 µg/10 ⁶ cells
	IHC-P	2-5 µg/ml
	WB	0.25-0.5 µg/ml
Application Note	* The dilutions indicate recommended starting dilutions and the optimal dilutions or concentrations should be determined by the scientist.	
Observed Size	50 kDa	

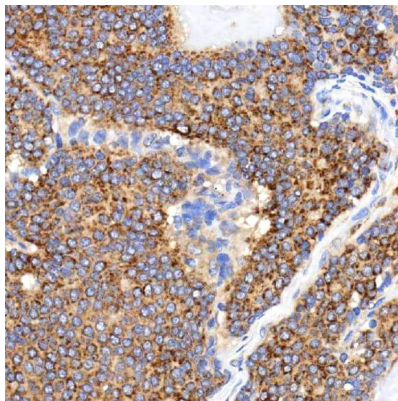
Properties

Form	Liquid
Purification	Affinity purification with immunogen.
Buffer	0.2% Na ₂ HPO ₄ , 0.9% NaCl and 4% Trehalose.
Stabilizer	4% Trehalose
Concentration	0.5 mg/ml
Storage instruction	For continuous use, store undiluted antibody at 2-8°C for up to a week. For long-term storage, aliquot and store at -20°C or below. Storage in frost free freezers is not recommended. Avoid repeated freeze/thaw cycles. Suggest spin the vial prior to opening. The antibody solution should be gently mixed before use.
Note	For laboratory research only, not for drug, diagnostic or other use.

Bioinformation

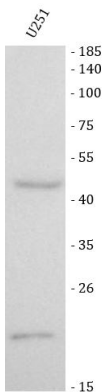
Gene Symbol	SGCE
Gene Full Name	Sarcoglycan Epsilon
Background	This gene encodes the epsilon member of the sarcoglycan family. Sarcoglycans are transmembrane proteins that are components of the dystrophin-glycoprotein complex, which link the actin cytoskeleton to the extracellular matrix. Unlike other family members which are predominantly expressed in striated muscle, the epsilon sarcoglycan is more broadly expressed. Mutations in this gene are associated with myoclonus-dystonia syndrome. This gene is imprinted, with preferential expression from the paternal allele. Alternatively spliced transcript variants encoding different isoforms have been found for this gene. A pseudogene associated with this gene is located on chromosome 2. [provided by RefSeq, Oct 2016]
Function	Component of the sarcoglycan complex, a subcomplex of the dystrophin-glycoprotein complex which forms a link between the F-actin cytoskeleton and the extracellular matrix.. [UniProt]
Calculated Mw	50 kDa
PTM	Glycoprotein; Ubl conjugation. [UniProt]
Cellular Localization	Cell membrane; Cell projection; Cytoplasm; Cytoskeleton; Golgi apparatus; Membrane. [UniProt]

Images



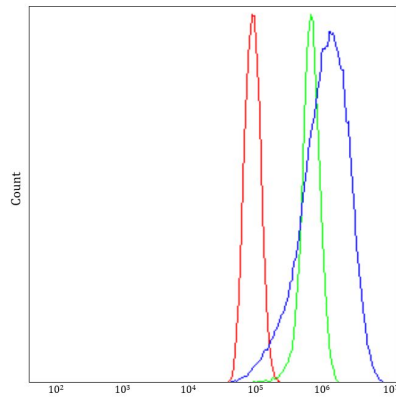
ARG45270 anti-SGCE antibody IHC-P image

Immunohistochemistry: Human breast cancer stained with ARG45270 anti-SGCE antibody at 2 µg/ml dilution.



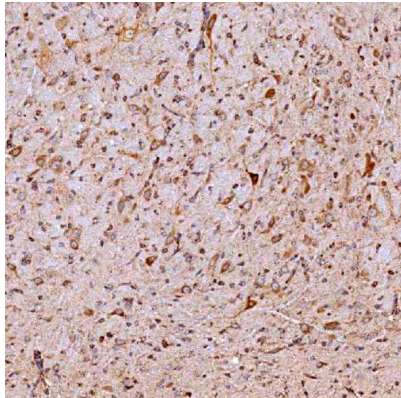
ARG45270 anti-SGCE antibody WB image

Western blot: U251 stained with ARG45270 anti-SGCE antibody at 0.5 µg/ml dilution.



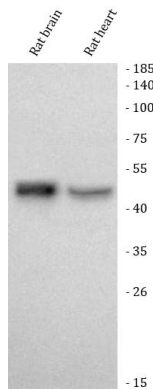
ARG45270 anti-SGCE antibody FACS image

Flow Cytometry: PC-3 stained with ARG45270 anti-SGCE antibody at 1 µg/10⁶ cells dilution.



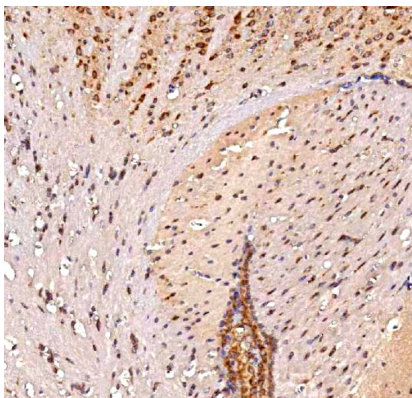
ARG45270 anti-SGCE antibody IHC-P image

Immunohistochemistry: Rat brain stained with ARG45270 anti-SGCE antibody at 2 µg/ml dilution.



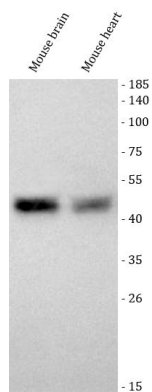
ARG45270 anti-SGCE antibody WB image

Western blot: Rat brain and rat heart stained with ARG45270 anti-SGCE antibody at 0.5 µg/ml dilution.



ARG45270 anti-SGCE antibody IHC-P image

Immunohistochemistry: Mouse brain stained with ARG45270 anti-SGCE antibody at 2 µg/ml dilution.



ARG45270 anti-SGCE antibody WB image

Western blot: Mouse brain and mouse heart stained with ARG45270 anti-SGCE antibody at 0.5 $\mu\text{g/ml}$ dilution.