

ARG45276 anti-CYTSA antibody

Package: 50 µg
Store at: -20°C

Summary

Product Description	Polyclonal antibody recognizes CYTSA
Tested Reactivity	Hu, Ms, Rat
Tested Application	FACS, ICC/IF, WB
Host	Rabbit
Clonality	Polyclonal
Isotype	Rabbit IgG
Target Name	CYTSA
Species	Human
Immunogen	Recombinant protein containing to human CYTSA.
Conjugation	Un-conjugated
Alternate Names	SPECC1L; Sperm Antigen With Calponin Homology And Coiled-Coil Domains 1 Like; KIAA0376; CYTSA; Cytokinesis And Spindle Organization A; Renal Carcinoma Antigen NY-REN-22; SPECC1-Like Protein; Cytospin-A; Sperm Antigen With Calponin Homology And Coiled-Coil Domains 1-Like; SPECC1-Like; Cytospin A; OBLFC1; GBBB2; TBHS1; TBHS

Application Instructions

Application table	Application	Dilution
	FACS	1 - 3 µg/10 ⁶ cells
	ICC/IF	5 µg/ml
	WB	0.25-0.5 µg/ml
Application Note	* The dilutions indicate recommended starting dilutions and the optimal dilutions or concentrations should be determined by the scientist.	
Observed Size	150 kDa	

Properties

Form	Liquid
Purification	Affinity purification with immunogen.
Buffer	0.2% Na ₂ HPO ₄ , 0.9% NaCl and 4% Trehalose.
Stabilizer	4% Trehalose
Concentration	0.5 mg/ml
Storage instruction	For continuous use, store undiluted antibody at 2-8°C for up to a week. For long-term storage, aliquot and store at -20°C or below. Storage in frost free freezers is not recommended. Avoid repeated freeze/thaw cycles. Suggest spin the vial prior to opening. The antibody solution should be gently mixed

before use.

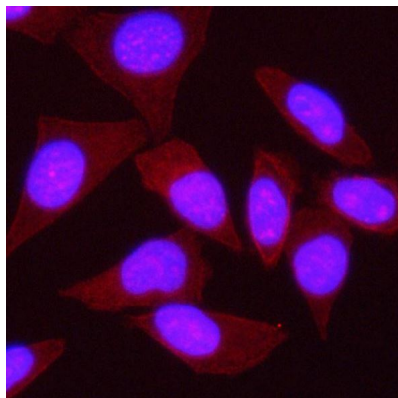
Note

For laboratory research only, not for drug, diagnostic or other use.

Bioinformation

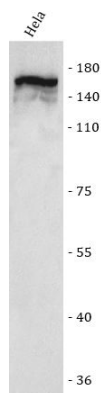
Gene Symbol	SPECC1L
Gene Full Name	Sperm Antigen With Calponin Homology And Coiled-Coil Domains 1 Like
Background	This gene encodes a coiled-coil domain containing protein. The encoded protein may play a critical role in actin-cytoskeletal reorganization during facial morphogenesis. Mutations in this gene are a cause of oblique facial clefting-1. Alternatively spliced transcript variants encoding multiple isoforms have been observed for this gene. A read-through transcript composed of SPECC1L (sperm antigen with calponin homology and coiled-coil domains 1-like) and the downstream ADORA2A (adenosine A2a receptor) gene sequence has been identified, but it is thought to be non-coding. [provided by RefSeq, Jun 2013]
Function	Involved in cytokinesis and spindle organization. May play a role in actin cytoskeleton organization and microtubule stabilization and hence required for proper cell adhesion and migration.. [UniProt]
Calculated Mw	125 kDa
PTM	Phosphoprotein. [UniProt]
Cellular Localization	Cell junction; Cytoplasm; Cytoskeleton; Gap junction. [UniProt]

Images



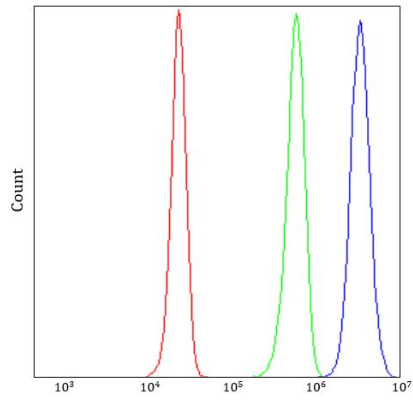
ARG45276 anti-CYTSA antibody ICC/IF image

Immunofluorescence: SiHa stained with ARG45276 anti-CYTSA antibody at 5 ug/ml dilution.



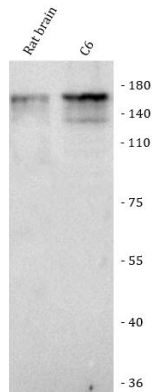
ARG45276 anti-CYTSA antibody WB image

Western blot: HeLa stained with ARG45276 anti-CYTSA antibody at 0.5 µg/ml dilution.



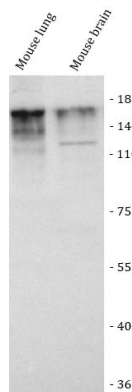
ARG45276 anti-CYTSA antibody FACS image

Flow Cytometry: HepG2 stained with ARG45276 anti-CYTSA antibody at 1 $\mu\text{g}/10^6$ cells dilution.



ARG45276 anti-CYTSA antibody WB image

Western blot: Rat brain and C6 stained with ARG45276 anti-CYTSA antibody at 0.5 $\mu\text{g}/\text{ml}$ dilution.



ARG45276 anti-CYTSA antibody WB image

Western blot: Mouse lung and mouse brain stained with ARG45276 anti-CYTSA antibody at 0.5 $\mu\text{g}/\text{ml}$ dilution.