

## ARG45279 anti-PCTP-L antibody

Package: 50 µg  
Store at: -20°C

### Summary

Product Description	Polyclonal antibody recognizes PCTP-L
Tested Reactivity	Hu, Ms, Rat
Tested Application	FACS, ICC/IF, WB
Host	Rabbit
Clonality	Polyclonal
Isotype	Rabbit IgG
Target Name	PCTP-L
Species	Human
Immunogen	Recombinant protein containing to human PCTP-L.
Conjugation	Un-conjugated
Alternate Names	STARD10; StAR Related Lipid Transfer Domain Containing 10; Serologically Defined Colon Cancer Antigen 28; NY-CO-28; SDCCAG28; CGI-52; PCTP2; StAR-Related Lipid Transfer Protein 10; START Domain-Containing Protein 10; START Domain Containing 10; PCTP-Like Protein; Antigen NY-CO-28; PCTP-L; StAR-Related Lipid Transfer (START) Domain Containing 10; StARD10

### Application Instructions

Application table	Application	Dilution
	FACS	1 - 3 µg/10 <sup>6</sup> cells
	ICC/IF	5 µg/ml
	WB	0.25-0.5 µg/ml
Application Note	* The dilutions indicate recommended starting dilutions and the optimal dilutions or concentrations should be determined by the scientist.	
Observed Size	37 kDa	

### Properties

Form	Liquid
Purification	Affinity purification with immunogen.
Buffer	0.2% Na <sub>2</sub> HPO <sub>4</sub> , 0.9% NaCl and 4% Trehalose.
Stabilizer	4% Trehalose
Concentration	0.5 mg/ml
Storage instruction	For continuous use, store undiluted antibody at 2-8°C for up to a week. For long-term storage, aliquot and store at -20°C or below. Storage in frost free freezers is not recommended. Avoid repeated freeze/thaw cycles. Suggest spin the vial prior to opening. The antibody solution should be gently mixed

before use.

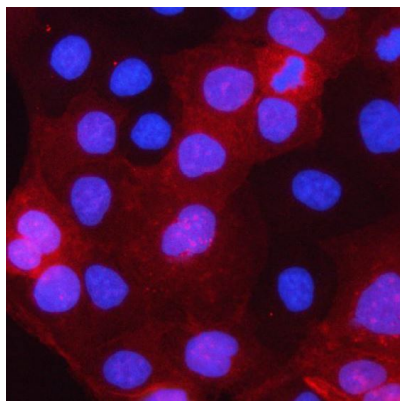
#### Note

For laboratory research only, not for drug, diagnostic or other use.

## Bioinformation

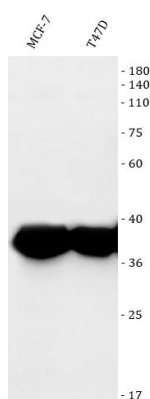
Gene Symbol	STARD10
Gene Full Name	StAR Related Lipid Transfer Domain Containing 10
Background	Predicted to enable lipid binding activity. Predicted to be involved in lipid transport. Predicted to act upstream of or within bile acid secretion and positive regulation of peroxisome proliferator activated receptor signaling pathway. Located in cytosol. [provided by Alliance of Genome Resources, Nov 2024]
Function	May play metabolic roles in sperm maturation or fertilization. [UniProt]
Calculated Mw	33 kDa
PTM	Acetylation; Phosphoprotein. [UniProt]
Cellular Localization	Cell projection; Cilium; Cytoplasm; Flagellum; Membrane. [UniProt]

## Images



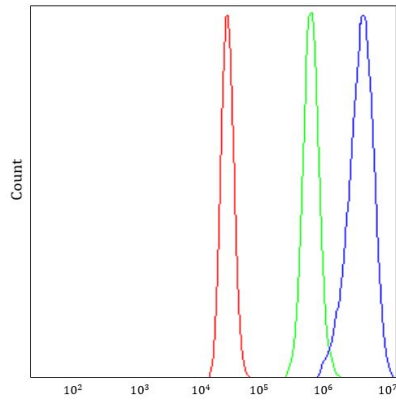
ARG45279 anti-PCTP-L antibody ICC/IF image

Immunofluorescence: CACO-2 stained with ARG45279 anti-PCTP-L antibody at 5 ug/ml dilution.



ARG45279 anti-PCTP-L antibody WB image

Western blot: MCF-7 and T47D stained with ARG45279 anti-PCTP-L antibody at 0.5 µg/ml dilution.



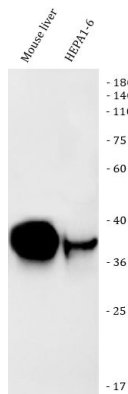
ARG45279 anti-PCTP-L antibody FACS image

Flow Cytometry: MCF-7 stained with ARG45279 anti-PCTP-L antibody at 1  $\mu\text{g}/10^6$  cells dilution.



ARG45279 anti-PCTP-L antibody WB image

Western blot: Rat liver stained with ARG45279 anti-PCTP-L antibody at 0.5  $\mu\text{g}/\text{ml}$  dilution.



ARG45279 anti-PCTP-L antibody WB image

Western blot: Mouse liver and HEPA1-6 stained with ARG45279 anti-PCTP-L antibody at 0.5  $\mu\text{g}/\text{ml}$  dilution.