

ARG45281 anti-SRPR alpha antibody

Package: 50 µg
Store at: -20°C

Summary

Product Description	Polyclonal antibody recognizes SRPR alpha
Tested Reactivity	Hu, Ms, Rat
Tested Application	FACS, ICC/IF, IHC-P, WB
Host	Rabbit
Clonality	Polyclonal
Isotype	Rabbit IgG
Target Name	SRPR alpha
Species	Human
Immunogen	Recombinant protein containing to human SRPR alpha.
Conjugation	Un-conjugated
Alternate Names	SRPRA; SRP Receptor Subunit Alpha; SR-Alpha; SRP-Alpha; Sralpha; SRPR; Signal Recognition Particle Receptor (Docking Protein); Signal Recognition Particle Receptor Subunit Alpha; Docking Protein Alpha; DP-Alpha; SRP Receptor Alpha Subunit; DP

Application Instructions

Application table	Application	Dilution
	FACS	1 - 3 µg/10 ⁶ cells
	ICC/IF	5 µg/ml
	IHC-P	2-5 µg/ml
	WB	0.25-0.5 µg/ml
Application Note	* The dilutions indicate recommended starting dilutions and the optimal dilutions or concentrations should be determined by the scientist.	
Observed Size	70 kDa	

Properties

Form	Liquid
Purification	Affinity purification with immunogen.
Buffer	0.2% Na ₂ HPO ₄ , 0.9% NaCl and 4% Trehalose.
Stabilizer	4% Trehalose
Concentration	0.5 mg/ml
Storage instruction	For continuous use, store undiluted antibody at 2-8°C for up to a week. For long-term storage, aliquot and store at -20°C or below. Storage in frost free freezers is not recommended. Avoid repeated freeze/thaw cycles. Suggest spin the vial prior to opening. The antibody solution should be gently mixed

before use.

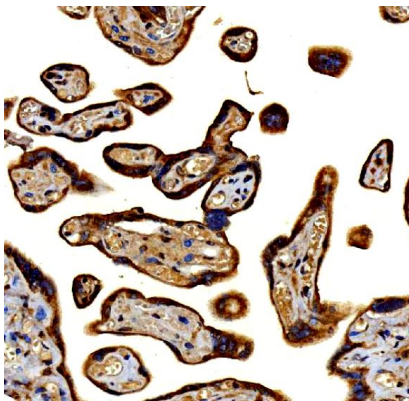
Note

For laboratory research only, not for drug, diagnostic or other use.

Bioinformation

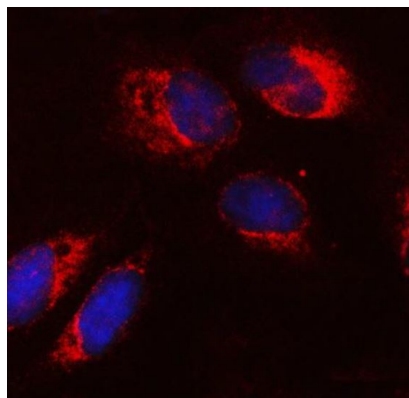
Gene Symbol	SRPRA
Gene Full Name	SRP Receptor Subunit Alpha
Background	The gene encodes a subunit of the endoplasmic reticulum signal recognition particle receptor that, in conjunction with the signal recognition particle, is involved in the targeting and translocation of signal sequence tagged secretory and membrane proteins across the endoplasmic reticulum. Alternative splicing results in multiple transcript variants. [provided by RefSeq, Apr 2010]
Function	Component of the signal recognition particle (SRP) complex receptor (SR) . [UniProt]
Calculated Mw	70 kDa
PTM	Phosphoprotein. [UniProt]
Cellular Localization	Endoplasmic reticulum; Membrane [UniProt]

Images



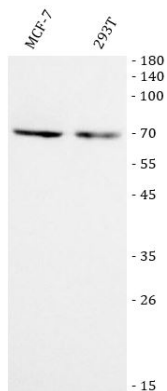
ARG45281 anti-SRPR alpha antibody IHC-P image

Immunohistochemistry: Human placenta stained with ARG45281 anti-SRPR alpha antibody at 2 µg/ml dilution.



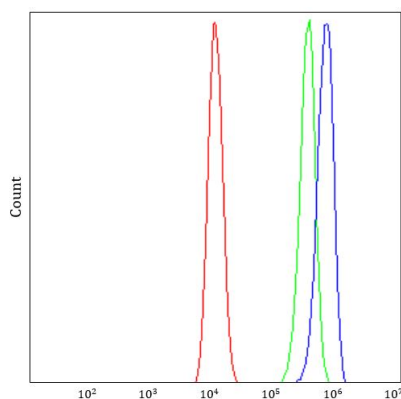
ARG45281 anti-SRPR alpha antibody ICC/IF image

Immunofluorescence: U2OS stained with ARG45281 anti-SRPR alpha antibody at 5 µg/ml dilution.



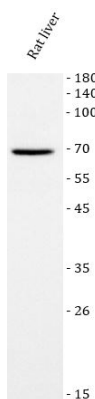
ARG45281 anti-SRPR alpha antibody WB image

Western blot: MCF-7 and 293T stained with ARG45281 anti-SRPR alpha antibody at 0.5 $\mu\text{g/ml}$ dilution.



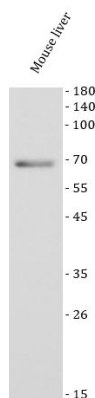
ARG45281 anti-SRPR alpha antibody FACS image

Flow Cytometry: HCT116 stained with ARG45281 anti-SRPR alpha antibody at 1 $\mu\text{g}/10^6$ cells dilution.



ARG45281 anti-SRPR alpha antibody WB image

Western blot: Rat liver stained with ARG45281 anti-SRPR alpha antibody at 0.5 $\mu\text{g/ml}$ dilution.



ARG45281 anti-SRPR alpha antibody WB image

Western blot: Mouse liver stained with ARG45281 anti-SRPR alpha antibody at 0.5 $\mu\text{g/ml}$ dilution.