

ARG45298 anti-RanBP2 antibody

Package: 50 µg
Store at: -20°C

Summary

Product Description	Polyclonal antibody recognizes RanBP2
Tested Reactivity	Hu
Tested Application	FACS, ICC/IF, IHC-P, WB
Host	Rabbit
Clonality	Polyclonal
Isotype	IgG
Target Name	RanBP2
Species	Human
Immunogen	Recombinant protein containing to human RanBP2.
Conjugation	Un-conjugated
Alternate Names	RANBP2; RAN Binding Protein 2; NUP358; ADANE; Acute Necrotizing Encephalopathy 1 (Autosomal Dominant); Nuclear Pore Complex Protein Nup358; E3 SUMO-Protein Ligase RanBP2; Ran-Binding Protein 2; 358 KDa Nucleoporin; Nucleoporin Nup358; Nucleoporin 358; ANE1; P270; E3 SUMO-Protein Transferase RanBP2; Transformation-Related Protein 2; EC 2.3.2.-; EC 5.2.1.8 47; RanBP2; IIAE3; TRP1; TRP2==

Application Instructions

Application table	Application	Dilution
	FACS	1 - 3 µg/10 ⁶ cells
	ICC/IF	5 µg/ml
	IHC-P	2-5 µg/ml
	WB	0.25-0.5 µg/ml
Application Note	* The dilutions indicate recommended starting dilutions and the optimal dilutions or concentrations should be determined by the scientist.	
Observed Size	358 kDa	

Properties

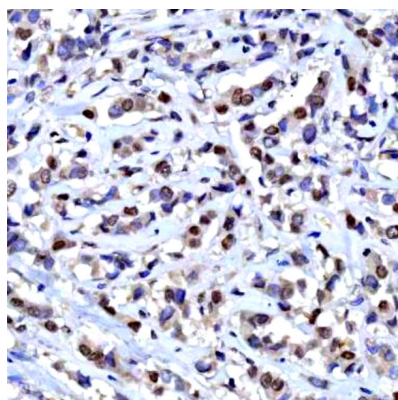
Form	Liquid
Purification	Affinity purification with immunogen.
Buffer	0.2% Na ₂ HPO ₄ , 0.9% NaCl and 4% Trehalose.
Stabilizer	4% Trehalose
Concentration	0.5 mg/ml

Storage instruction	For continuous use, store undiluted antibody at 2-8°C for up to a week. For long-term storage, aliquot and store at -20°C or below. Storage in frost free freezers is not recommended. Avoid repeated freeze/thaw cycles. Suggest spin the vial prior to opening. The antibody solution should be gently mixed before use.
Note	For laboratory research only, not for drug, diagnostic or other use.

Bioinformation

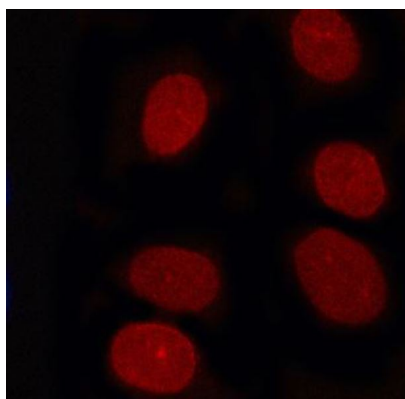
Gene Symbol	RANBP2
Gene Full Name	RAN Binding Protein 2
Background	RAN is a small GTP-binding protein of the RAS superfamily that is associated with the nuclear membrane and is thought to control a variety of cellular functions through its interactions with other proteins. This gene encodes a very large RAN-binding protein that immunolocalizes to the nuclear pore complex. The protein is a giant scaffold and mosaic cyclophilin-related nucleoporin implicated in the Ran-GTPase cycle. The encoded protein directly interacts with the E2 enzyme UBC9 and strongly enhances SUMO1 transfer from UBC9 to the SUMO1 target SP100. These findings place sumoylation at the cytoplasmic filaments of the nuclear pore complex and suggest that, for some substrates, modification and nuclear import are linked events. This gene is partially duplicated in a gene cluster that lies in a hot spot for recombination on chromosome 2q. [provided by RefSeq, Jul 2008]
Function	E3 SUMO-protein ligase which facilitates SUMO1 and SUMO2 conjugation by UBE2I. [UniProt]
Calculated Mw	358 kDa
PTM	Acetylation; Disulfide bond; Isopeptide bond; Methylation; Phosphoprotein; Ubl conjugation. [UniProt]
Cellular Localization	Membrane; Nuclear pore complex; Nucleus. [UniProt]

Images



ARG45298 anti-RanBP2 antibody IHC-P image

Immunohistochemistry: Human breast cancer stained with ARG45298 anti-RanBP2 antibody at 2 µg/ml dilution.



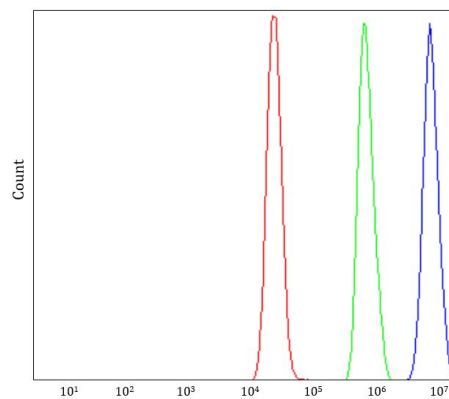
ARG45298 anti-RanBP2 antibody ICC/IF image

Immunofluorescence: U2OS stained with ARG45298 anti-RanBP2 antibody at 5 µg/ml dilution.



ARG45298 anti-RanBP2 antibody WB image

Western blot: K562 stained with ARG45298 anti-RanBP2 antibody at 0.5 $\mu\text{g/ml}$ dilution.



ARG45298 anti-RanBP2 antibody FACS image

Flow Cytometry: MCF-7 stained with ARG45298 anti-RanBP2 antibody at 1 $\mu\text{g}/10^6$ cells dilution.