

## ARG45299 anti-RBM22 antibody

Package: 50 µg  
Store at: -20°C

### Summary

Product Description	Polyclonal antibody recognizes RBM22
Tested Reactivity	Hu, Ms, Rat
Tested Application	FACS, IHC-P, WB
Host	Rabbit
Clonality	Polyclonal
Isotype	Rabbit IgG
Target Name	RBM22
Species	Human
Immunogen	Recombinant protein containing to human RBM22.
Conjugation	Un-conjugated
Alternate Names	RBM22; RNA Binding Motif Protein 22; ZC3H16; FSAP47; Cwc2; Zinc Finger CCCH Domain-Containing Protein 16; Functional Spliceosome-Associated Protein 47; Pre-mRNA-Splicing Factor RBM22; FLJ10290; RNA-Binding Motif Protein 22

### Application Instructions

Application table	Application	Dilution
	FACS	1 - 3 µg/10 <sup>6</sup> cells
	IHC-P	2-5 µg/ml
	WB	0.25-0.5 µg/ml
Application Note	* The dilutions indicate recommended starting dilutions and the optimal dilutions or concentrations should be determined by the scientist.	
Observed Size	47 kDa	

### Properties

Form	Liquid
Purification	Affinity purification with immunogen.
Buffer	0.2% Na <sub>2</sub> HPO <sub>4</sub> , 0.9% NaCl and 4% Trehalose.
Stabilizer	4% Trehalose
Concentration	0.5 mg/ml
Storage instruction	For continuous use, store undiluted antibody at 2-8°C for up to a week. For long-term storage, aliquot and store at -20°C or below. Storage in frost free freezers is not recommended. Avoid repeated freeze/thaw cycles. Suggest spin the vial prior to opening. The antibody solution should be gently mixed before use.

**Note**

For laboratory research only, not for drug, diagnostic or other use.

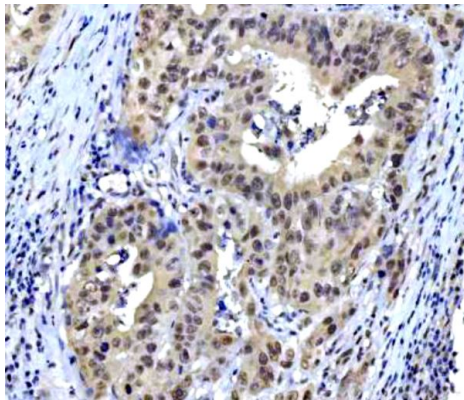
## Bioinformation

---

Gene Symbol	RBM22
Gene Full Name	RNA Binding Motif Protein 22
Background	This gene encodes an RNA binding protein. The encoded protein may play a role in cell division and may be involved in pre-mRNA splicing. Related pseudogenes exist on chromosomes 6, 7, 9, 13, 16, 18, and X. [provided by RefSeq, Mar 2009]
Function	Required for pre-mRNA splicing as component of the activated spliceosome. [UniProt]
Calculated Mw	41 kDa
PTM	Acetylation; Isopeptide bond; Phosphoprotein; Ubl conjugation. [UniProt]
Cellular Localization	Cytoplasm; Nucleus; Spliceosome. [UniProt]

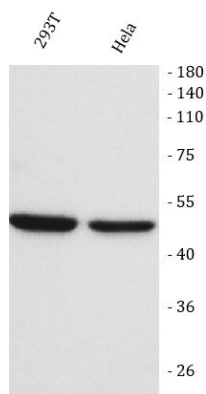
## Images

---



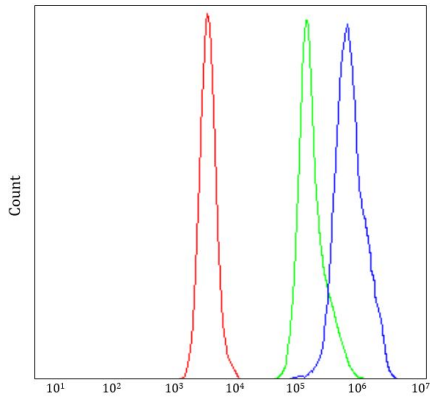
ARG45299 anti-RBM22 antibody IHC-P image

Immunohistochemistry: Human appendix adenocarcinoma stained with ARG45299 anti-RBM22 antibody at 2 µg/ml dilution.



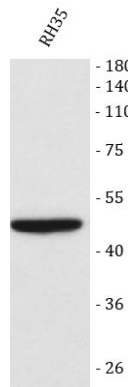
ARG45299 anti-RBM22 antibody WB image

Western blot: 293T and HeLa stained with ARG45299 anti-RBM22 antibody at 0.5 µg/ml dilution.



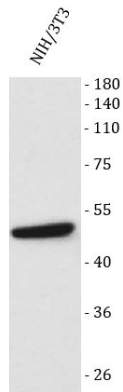
#### ARG45299 anti-RBM22 antibody FACS image

Flow Cytometry: Daudi stained with ARG45299 anti-RBM22 antibody at 1 µg/10<sup>6</sup> cells dilution.



#### ARG45299 anti-RBM22 antibody WB image

Western blot: RH35 stained with ARG45299 anti-RBM22 antibody at 0.5 µg/ml dilution.



#### ARG45299 anti-RBM22 antibody WB image

Western blot: NIH/3T3 stained with ARG45299 anti-RBM22 antibody at 0.5 µg/ml dilution.