

ARG45310 anti-Tropomodulin 2 antibody

Package: 50 µg
Store at: -20°C

Summary

Product Description	Polyclonal antibody recognizes Tropomodulin 2
Tested Reactivity	Hu, Ms, Rat
Tested Application	FACS, ICC/IF, WB
Host	Rabbit
Clonality	Polyclonal
Isotype	Rabbit IgG
Target Name	Tropomodulin 2
Species	Human
Immunogen	Recombinant protein containing to human Tropomodulin 2.
Conjugation	Un-conjugated
Alternate Names	TMOD2; Tropomodulin 2; NTMOD; Neuronal Tropomodulin; Tropomodulin-2; Tropomodulin 2 (Neuronal); N-TMOD; N-Tmod

Application Instructions

Application table	Application	Dilution
	FACS	1 - 3 µg/10 ⁶ cells
	ICC/IF	5 µg/ml
	WB	0.25-0.5 µg/ml
Application Note	* The dilutions indicate recommended starting dilutions and the optimal dilutions or concentrations should be determined by the scientist.	
Observed Size	40 kDa	

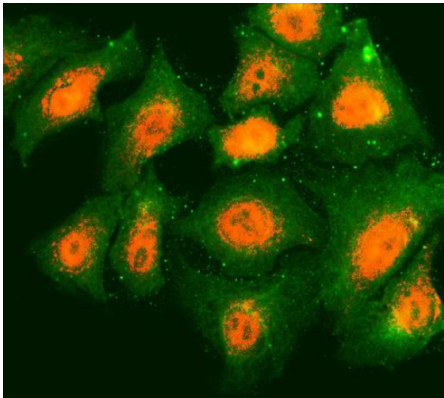
Properties

Form	Liquid
Purification	Affinity purification with immunogen.
Buffer	0.2% Na ₂ HPO ₄ , 0.9% NaCl and 4% Trehalose.
Stabilizer	4% Trehalose
Concentration	0.5 mg/ml
Storage instruction	For continuous use, store undiluted antibody at 2-8°C for up to a week. For long-term storage, aliquot and store at -20°C or below. Storage in frost free freezers is not recommended. Avoid repeated freeze/thaw cycles. Suggest spin the vial prior to opening. The antibody solution should be gently mixed before use.

Bioinformation

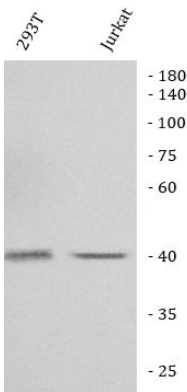
Gene Symbol	TMOD2
Gene Full Name	Tropomodulin 2
Background	This gene encodes a neuronal-specific member of the tropomodulin family of actin-regulatory proteins. The encoded protein caps the pointed end of actin filaments preventing both elongation and depolymerization. The capping activity of this protein is dependent on its association with tropomyosin. Alternatively spliced transcript variants encoding different isoforms have been described. [provided by RefSeq, Dec 2008]
Function	Blocks the elongation and depolymerization of the actin filaments at the pointed end. The Tmod/TM complex contributes to the formation of the short actin protofilament, which in turn defines the geometry of the membrane skeleton. [UniProt]
Calculated Mw	40 kDa
PTM	Phosphoprotein. [UniProt]
Cellular Localization	Cytoplasm; Cytoskeleton. [UniProt]

Images



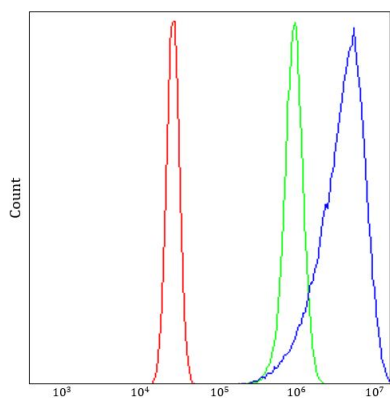
ARG45310 anti-Tropomodulin 2 antibody ICC/IF image

Immunofluorescence: A549 stained with ARG45310 anti-Tropomodulin 2 antibody at 5 ug/ml dilution.



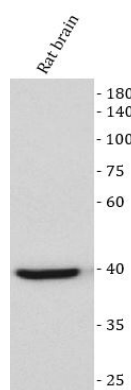
ARG45310 anti-Tropomodulin 2 antibody WB image

Western blot: 293T and Jurkat stained with ARG45310 anti-Tropomodulin 2 antibody at 0.5 µg/ml dilution.



ARG45310 anti-Tropomodulin 2 antibody FACS image

Flow Cytometry: U2OS stained with ARG45310 anti-Tropomodulin 2 antibody at 1 $\mu\text{g}/10^6$ cells dilution.



ARG45310 anti-Tropomodulin 2 antibody WB image

Western blot: Rat brain stained with ARG45310 anti-Tropomodulin 2 antibody at 0.5 $\mu\text{g}/\text{ml}$ dilution.



ARG45310 anti-Tropomodulin 2 antibody WB image

Western blot: Mouse brain stained with ARG45310 anti-Tropomodulin 2 antibody at 0.5 $\mu\text{g}/\text{ml}$ dilution.