

ARG45315 anti-OLA1 antibody

Package: 50 µg
Store at: -20°C

Summary

Product Description	Polyclonal antibody recognizes OLA1
Tested Reactivity	Hu, Ms, Rat
Tested Application	FACS, ICC/IF, WB
Host	Rabbit
Clonality	Polyclonal
Isotype	Rabbit IgG
Target Name	OLA1
Species	Human
Immunogen	Recombinant protein containing to human OLA1.
Conjugation	Un-conjugated
Alternate Names	OLA1; Olg Like ATPase 1; PTD004; GTPBP9; GTP-Binding Protein 9 (Putative); Olg-Like ATPase 1; DOC45; DNA Damage-Regulated Overexpressed In Cancer 45 Protein; DNA Damage-Regulated Overexpressed In Cancer 45; Homologous Yeast-44.2 Protein; GTP-Binding Protein PTD004; GTP-Binding Protein 9; EC 3.6.3 47; GBP45; GTBP9

Application Instructions

Application table	Application	Dilution
	FACS	1 - 3 µg/10 ⁶ cells
	ICC/IF	5 µg/ml
	WB	0.1-0.25 µg/ml
Application Note	* The dilutions indicate recommended starting dilutions and the optimal dilutions or concentrations should be determined by the scientist.	
Observed Size	45 kDa	

Properties

Form	Liquid
Purification	Affinity purification with immunogen.
Buffer	0.2% Na ₂ HPO ₄ , 0.9% NaCl and 4% Trehalose.
Stabilizer	4% Trehalose
Concentration	0.5 mg/ml
Storage instruction	For continuous use, store undiluted antibody at 2-8°C for up to a week. For long-term storage, aliquot and store at -20°C or below. Storage in frost free freezers is not recommended. Avoid repeated freeze/thaw cycles. Suggest spin the vial prior to opening. The antibody solution should be gently mixed

before use.

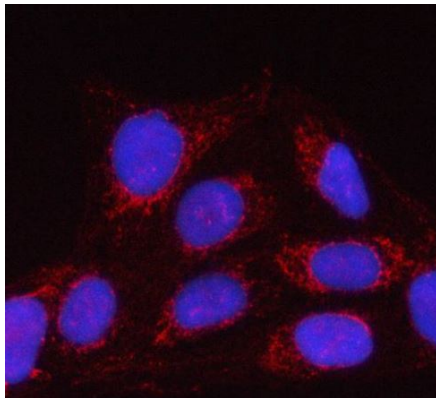
Note

For laboratory research only, not for drug, diagnostic or other use.

Bioinformation

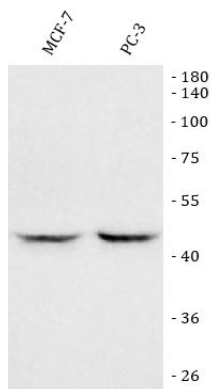
Gene Symbol	OLA1
Gene Full Name	Obg Like ATPase 1
Background	This gene encodes a member of the GTPase protein family. The encoded protein interacts with breast cancer-associated gene 1 (BRCA1) and BRCA1-associated RING domain protein (BARD1), and is involved in centrosome regulation. Overexpression of this gene has been observed in multiple types of cancer and may be associated with poor survival. Pseudogenes of this gene have been defined on chromosomes 17 and 22. [provided by RefSeq, Jun 2016]
Function	Hydrolyzes ATP, and can also hydrolyze GTP with lower efficiency. Has lower affinity for GTP. [UniProt]
Calculated Mw	45 kDa
PTM	Acetylation. [UniProt]
Cellular Localization	Cytoplasm; Nucleus. [UniProt]

Images



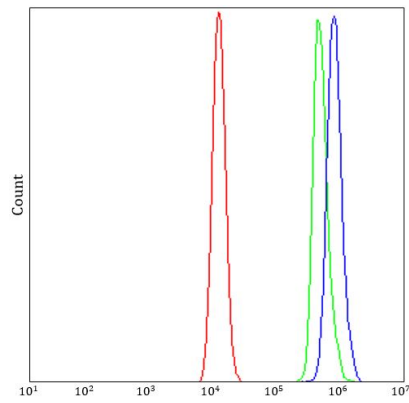
ARG45315 anti-OLA1 antibody ICC/IF image

Immunofluorescence: U2OS stained with ARG45315 anti-OLA1 antibody at 5 ug/ml dilution.



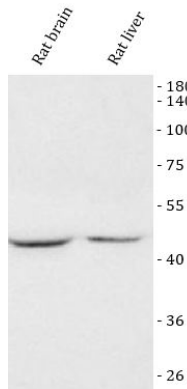
ARG45315 anti-OLA1 antibody WB image

Western blot: MCF-7 and PC-3 stained with ARG45315 anti-OLA1 antibody at 0.5 µg/ml dilution.



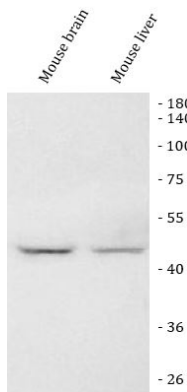
ARG45315 anti-OLA1 antibody FACS image

Flow Cytometry: Raji stained with ARG45315 anti-OLA1 antibody at 1 µg/10⁶ cells dilution.



ARG45315 anti-OLA1 antibody WB image

Western blot: Rat brain and rat liver stained with ARG45315 anti-OLA1 antibody at 0.5 µg/ml dilution.



ARG45315 anti-OLA1 antibody WB image

Western blot: Mouse brain and mouse liver stained with ARG45315 anti-OLA1 antibody at 0.5 µg/ml dilution.