

## ARG45320 anti-RUFY2 antibody

Package: 50 µg  
Store at: -20°C

### Summary

Product Description	Polyclonal antibody recognizes RUFY2
Tested Reactivity	Hu
Tested Application	FACS, ICC/IF, WB
Host	Rabbit
Clonality	Polyclonal
Isotype	Rabbit IgG
Target Name	RUFY2
Species	Human
Immunogen	Recombinant protein containing to human RUFY2.
Conjugation	Un-conjugated
Alternate Names	RUFY2; RUN And FYVE Domain Containing 2; RABIP4R; KIAA1537; ZFYVE13; RUN And FYVE Domain-Containing Protein 2; Rab4-Interacting Protein Related; FLJ10063; Run- And FYVE-Domain Containing Protein; Antigen MU-RMS-40.17

### Application Instructions

Application table	Application	Dilution
	FACS	1 - 3 µg/10 <sup>6</sup> cells
	ICC/IF	5 µg/ml
	WB	0.25-0.5 µg/ml
Application Note	* The dilutions indicate recommended starting dilutions and the optimal dilutions or concentrations should be determined by the scientist.	
Observed Size	69 kDa	

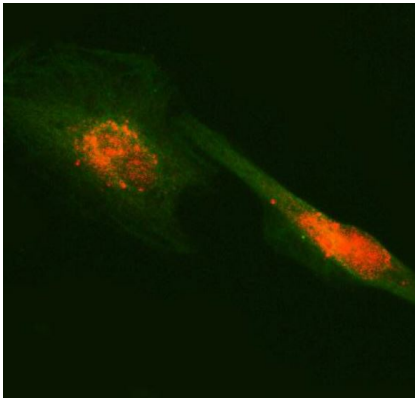
### Properties

Form	Liquid
Purification	Affinity purification with immunogen.
Buffer	0.2% Na <sub>2</sub> HPO <sub>4</sub> , 0.9% NaCl and 4% Trehalose.
Stabilizer	4% Trehalose
Concentration	0.5 mg/ml
Storage instruction	For continuous use, store undiluted antibody at 2-8°C for up to a week. For long-term storage, aliquot and store at -20°C or below. Storage in frost free freezers is not recommended. Avoid repeated freeze/thaw cycles. Suggest spin the vial prior to opening. The antibody solution should be gently mixed before use.

Bioinformation

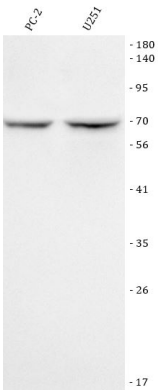
Gene Symbol	RUFY2
Gene Full Name	RUN And FYVE Domain Containing 2
Background	Enables SH3 domain binding activity. Predicted to be involved in regulation of endocytosis. Located in cytoplasm. [provided by Alliance of Genome Resources, Nov 2024]
Calculated Mw	70 kDa
Cellular Localization	Nucleus. [UniProt]

Images



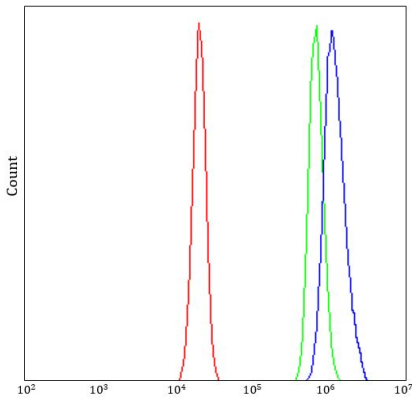
ARG45320 anti-RUFY2 antibody ICC/IF image

Immunofluorescence: U87 stained with ARG45320 anti-RUFY2 antibody at 5 ug/ml dilution.



ARG45320 anti-RUFY2 antibody WB image

Western blot: PC-3 and U251 stained with ARG45320 anti-RUFY2 antibody at 0.5 µg/ml dilution.



ARG45320 anti-RUFY2 antibody FACS image

Flow Cytometry: U20S stained with ARG45320 anti-RUFY2 antibody at 1 µg/10^6 cells dilution.