

ARG45322 anti-RSBN1 antibody

Package: 50 µg
Store at: -20°C

Summary

Product Description	Polyclonal antibody recognizes RSBN1
Tested Reactivity	Hu
Tested Application	FACS, ICC/IF, IHC-P, WB
Host	Rabbit
Clonality	Polyclonal
Isotype	Rabbit IgG
Target Name	RSBN1
Species	Human
Immunogen	Recombinant protein containing to human RSBN1.
Conjugation	Un-conjugated
Alternate Names	RSBN1; Round Spermatid Basic Protein 1; KDM9; ROSBIN; Lysine-Specific Demethylase 9; FLJ11220; EC 1.14.11.-

Application Instructions

Application table	Application	Dilution
	FACS	1 - 3 µg/10 ⁶ cells
	ICC/IF	5 µg/ml
	IHC-P	2-5 µg/ml
	WB	0.25-0.5 µg/ml
Application Note	* The dilutions indicate recommended starting dilutions and the optimal dilutions or concentrations should be determined by the scientist.	
Observed Size	95 kDa	

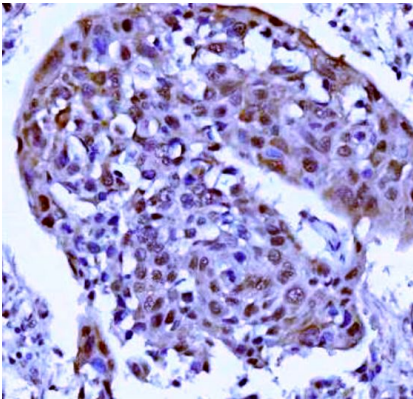
Properties

Form	Liquid
Purification	Affinity purification with immunogen.
Buffer	0.2% Na ₂ HPO ₄ , 0.9% NaCl and 4% Trehalose.
Stabilizer	4% Trehalose
Concentration	0.5 mg/ml
Storage instruction	For continuous use, store undiluted antibody at 2-8°C for up to a week. For long-term storage, aliquot and store at -20°C or below. Storage in frost free freezers is not recommended. Avoid repeated freeze/thaw cycles. Suggest spin the vial prior to opening. The antibody solution should be gently mixed before use.

Bioinformation

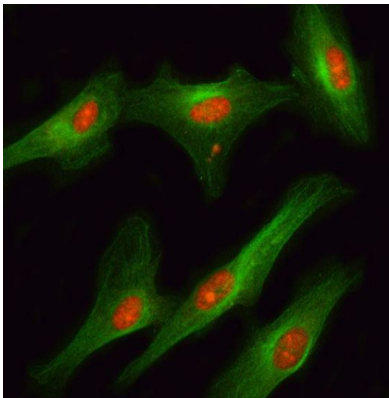
Gene Symbol	RSBN1
Gene Full Name	Round Spermatid Basic Protein 1
Background	Predicted to enable histone H4K20 demethylase activity and metal ion binding activity. Predicted to be involved in chromatin remodeling. Predicted to be located in endoplasmic reticulum. Predicted to be active in nucleus. [provided by Alliance of Genome Resources, Nov 2024]
Function	Histone demethylase that specifically demethylates dimethylated 'Lys-20' of histone H4 (H4K20me2), thereby modulating chromosome architecture.. [UniProt]
Calculated Mw	90 kDa
PTM	Isopeptide bond; Phosphoprotein; Ubl conjugation. [UniProt]
Cellular Localization	Nucleus. [UniProt]

Images



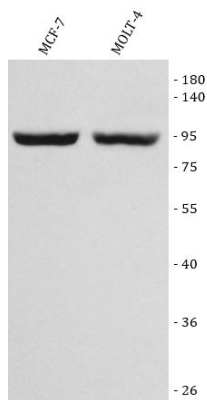
ARG45322 anti-RSBN1 antibody IHC-P image

Immunohistochemistry: Human esophageal squamous carcinoma stained with ARG45322 anti-RSBN1 antibody at 2 µg/ml dilution.



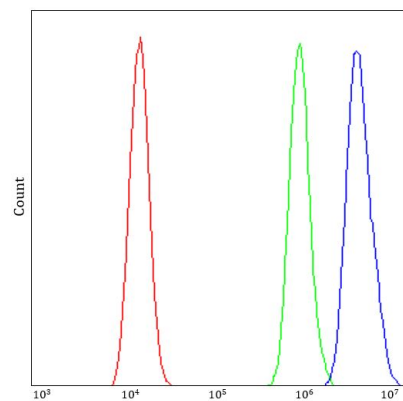
ARG45322 anti-RSBN1 antibody ICC/IF image

Immunofluorescence: U87 stained with ARG45322 anti-RSBN1 antibody at 5 ug/ml dilution.



ARG45322 anti-RSBN1 antibody WB image

Western blot: MCF-7 and MOLT-4 stained with ARG45322 anti-RSBN1 antibody at 0.5 $\mu\text{g/ml}$ dilution.



ARG45322 anti-RSBN1 antibody FACS image

Flow Cytometry: U2OS stained with ARG45322 anti-RSBN1 antibody at 1 $\mu\text{g}/10^6$ cells dilution.