

ARG45323 anti-PATL2 antibody

Package: 50 µg
Store at: -20°C

Summary

Product Description	Polyclonal antibody recognizes PATL2
Tested Reactivity	Hu, Ms, Rat
Tested Application	FACS, ICC/IF, WB
Host	Rabbit
Clonality	Polyclonal
Isotype	Rabbit IgG
Target Name	PATL2
Species	Human
Immunogen	Recombinant protein containing to human PATL2.
Conjugation	Un-conjugated
Alternate Names	PATL2; PAT1 Homolog 2; Pat1a; Protein PAT1 Homolog 2; Protein PAT1 Homolog A; PAT1-Like Protein 2; HPat1a; Protein Associated With Topoisomerase II Homolog 2 (Yeast); Protein Associated With Topoisomerase II Homolog 2; OZEMA4; OOMD4

Application Instructions

Application table	Application	Dilution
	FACS	1 - 3 µg/10 ⁶ cells
	ICC/IF	5 µg/ml
	WB	0.1-0.25 µg/ml
Application Note	* The dilutions indicate recommended starting dilutions and the optimal dilutions or concentrations should be determined by the scientist.	
Observed Size	59 kDa	

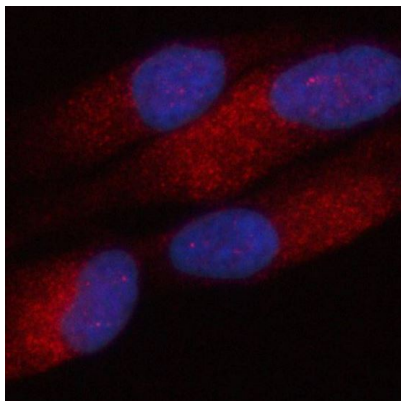
Properties

Form	Liquid
Purification	Affinity purification with immunogen.
Buffer	0.2% Na ₂ HPO ₄ , 0.9% NaCl and 4% Trehalose.
Stabilizer	4% Trehalose
Concentration	0.5 mg/ml
Storage instruction	For continuous use, store undiluted antibody at 2-8°C for up to a week. For long-term storage, aliquot and store at -20°C or below. Storage in frost free freezers is not recommended. Avoid repeated freeze/thaw cycles. Suggest spin the vial prior to opening. The antibody solution should be gently mixed before use.

Bioinformation

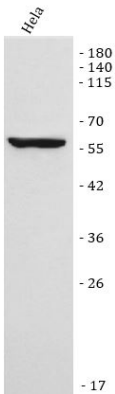
Gene Symbol	PATL2
Gene Full Name	PAT1 Homolog 2
Background	Predicted to enable RNA binding activity. Predicted to be involved in P-body assembly; deadenylation-dependent decapping of nuclear-transcribed mRNA; and negative regulation of translation. Predicted to act upstream of or within negative regulation of cytoplasmic mRNA processing body assembly. Located in cytoplasm. [provided by Alliance of Genome Resources, Nov 2024]
Function	RNA-binding protein that acts as a translational repressor. [UniProt]
Calculated Mw	61 kDa
Cellular Localization	Cytoplasm; Nucleus. [UniProt]

Images



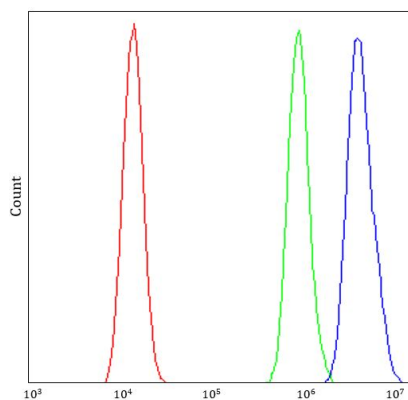
ARG45323 anti-PATL2 antibody ICC/IF image

Immunofluorescence: HeLa stained with ARG45323 anti-PATL2 antibody at 5 ug/ml dilution.



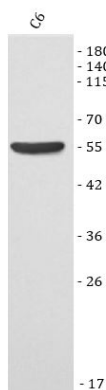
ARG45323 anti-PATL2 antibody WB image

Western blot: HeLa stained with ARG45323 anti-PATL2 antibody at 0.5 μ g/ml dilution.



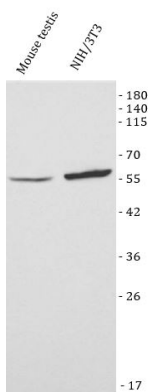
ARG45323 anti-PATL2 antibody FACS image

Flow Cytometry: HEL stained with ARG45323 anti-PATL2 antibody at $1 \mu\text{g}/10^6$ cells dilution.



ARG45323 anti-PATL2 antibody WB image

Western blot: C6 stained with ARG45323 anti-PATL2 antibody at $0.5 \mu\text{g}/\text{ml}$ dilution.



ARG45323 anti-PATL2 antibody WB image

Western blot: Mouse testis and NIH/3T3 stained with ARG45323 anti-PATL2 antibody at $0.5 \mu\text{g}/\text{ml}$ dilution.