

ARG45339 anti-CCRL-2 antibody [5A15]

Package: 50 µg
Store at: -20°C

Summary

Product Description	Mouse Monoclonal antibody [5A15] recognizes CCRL-2
Tested Reactivity	Hu
Tested Application	IHC-P
Host	Mouse
Clonality	Monoclonal
Clone	5A15
Isotype	IgG2
Target Name	CCRL-2
Species	Human
Immunogen	Recombinant Human CCRL-2.
Conjugation	Un-conjugated
Alternate Names	CCRL2; C-C Motif Chemokine Receptor Like 2; CKRX; HCR; CRAM-B; CRAM-A; ACKR5; Chemokine (C-C Motif) Receptor-Like 2; Putative MCP-1 Chemokine Receptor; Atypical Chemokine Receptor 5; C-C Chemokine Receptor-Like 2; Chemokine Receptor CCR11; Chemokine Receptor X; CRAM; CCR11; CCR6

Application Instructions

Application table	Application	Dilution
	IHC-P	Assay-dependent
Application Note	* The dilutions indicate recommended starting dilutions and the optimal dilutions or concentrations should be determined by the scientist.	

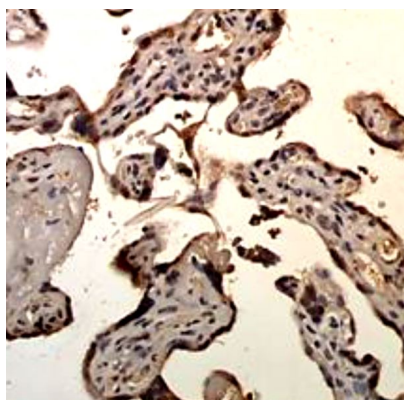
Properties

Form	Powder
Purification	Protein G chromatography
Buffer	PBS
Reconstitution	PBS
Concentration	0.2 mg/ml
Storage instruction	For continuous use, store undiluted antibody at 2-8°C for up to a week. For long-term storage, aliquot and store at -20°C or below. Storage in frost free freezers is not recommended. Avoid repeated freeze/thaw cycles. Suggest spin the vial prior to opening. The antibody solution should be gently mixed before use.
Note	For laboratory research only, not for drug, diagnostic or other use.

Bioinformation

Gene Symbol	CCRL2
Gene Full Name	C-C Motif Chemokine Receptor Like 2
Background	This gene encodes a chemokine receptor like protein, which is predicted to be a seven transmembrane protein and most closely related to CCR1. Chemokines and their receptors mediated signal transduction are critical for the recruitment of effector immune cells to the site of inflammation. This gene is expressed at high levels in primary neutrophils and primary monocytes, and is further upregulated on neutrophil activation and during monocyte to macrophage differentiation. The function of this gene is unknown. This gene is mapped to the region where the chemokine receptor gene cluster is located. [provided by RefSeq, Jul 2008]
Function	Receptor for CCL19 and chemerin/RARRES2. Does not appear to be a signaling receptor, but may have a role in modulating chemokine-triggered immune responses by capturing and internalizing CCL19 or by presenting RARRES2 ligand to CMKLR1, a functional signaling receptors. Plays a critical role for the development of Th2 responses. [UniProt]
Calculated Mw	40 kDa
PTM	Disulfide bond; Glycoprotein. [UniProt]
Cellular Localization	Cell membrane; Membrane. [UniProt]

Images



ARG45339 anti-CCRL-2 antibody [5A15] IHC-P image

Immunohistochemistry: Human placental stained with ARG45339 anti-CCRL-2 antibody [5A15].