

## ARG45352 anti-Eph receptor B6 antibody [9B17]

Package: 50 µg  
Store at: -20°C

### Summary

Product Description	Rat Monoclonal antibody [9B17] recognizes Eph receptor B6
Tested Reactivity	Ms
Tested Application	IHC-P
Host	Rat
Clonality	Monoclonal
Clone	9B17
Isotype	IgG2
Target Name	Eph receptor B6
Species	Mouse
Immunogen	Recombinant Mouse Eph receptor B6.
Conjugation	Un-conjugated
Alternate Names	EPHB6; EPH Receptor B6; HEP; Tyrosine-Protein Kinase-Defective Receptor EPH-6; Ephrin Type-B Receptor 6; Human Kinase-Defective Eph-Family Receptor Protein; EC 2.7.10.1; EphB6

### Application Instructions

Application table	Application	Dilution
	IHC-P	1:50 - 1:200
Application Note	* The dilutions indicate recommended starting dilutions and the optimal dilutions or concentrations should be determined by the scientist.	

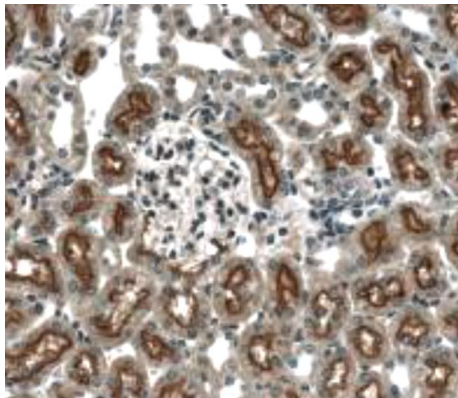
### Properties

Form	Powder
Purification	Protein G/A chromatography
Buffer	PBS
Reconstitution	PBS
Concentration	0.2 mg/ml
Storage instruction	For continuous use, store undiluted antibody at 2-8°C for up to a week. For long-term storage, aliquot and store at -20°C or below. Storage in frost free freezers is not recommended. Avoid repeated freeze/thaw cycles. Suggest spin the vial prior to opening. The antibody solution should be gently mixed before use.
Note	For laboratory research only, not for drug, diagnostic or other use.

Bioinformation

Gene Symbol	EphB6
Gene Full Name	EPH Receptor B6
Background	This gene encodes a member of a family of transmembrane proteins that function as receptors for ephrin-B family proteins. Unlike other members of this family, the encoded protein does not contain a functional kinase domain. Activity of this protein can influence cell adhesion and migration. Expression of this gene is downregulated during tumor progression, suggesting that the protein may suppress tumor invasion and metastasis. Alternative splicing results in multiple transcript variants. [provided by RefSeq, Jul 2013]
Function	Kinase-defective receptor for members of the ephrin-B family. Binds to ephrin-B1 and ephrin-B2. Modulates cell adhesion and migration by exerting both positive and negative effects upon stimulation with ephrin-B2. Inhibits JNK activation, T-cell receptor-induced IL-2 secretion and CD25 expression upon stimulation with ephrin-B2 . [UniProt]
Calculated Mw	110 kDa
PTM	Glycoprotein. [UniProt]
Cellular Localization	Cell membrane; Membrane; Secreted. [UniProt]

Images



ARG45352 anti-Eph receptor B6 antibody [9B17] IHC-P image

Immunohistochemistry: Mouse kidney stained with ARG45352 anti-Eph receptor B6 antibody [9B17].