

ARG45382 anti-EMILIN1 antibody [1H2/G8]

Package: 100 µg
Store at: -20°C

Summary

Product Description	Mouse Monoclonal antibody recognizes EMILIN1
Tested Reactivity	Hu
Tested Application	ICC/IF, IHC-Fr, WB
Host	Mouse
Clonality	Monoclonal
Clone	1H2/G8
Isotype	IgG2a
Target Name	EMILIN1
Species	Human
Immunogen	Recombinant Human EMILIN1.
Conjugation	Un-conjugated
Alternate Names	EMILIN1; Elastin Microfibril Interfacer 1; EMILIN; Gp115; Elastin Microfibril Interface-Located Protein 1; DKFZp586M121; EMILIN-1; EMI; HMND10; ATBFS; HMN10

Application Instructions

Application table	Application	Dilution
	ICC/IF	1-5 µg/ml
	IHC-Fr	1-5 µg/ml
	WB	2-5 µg/ml
Application Note	* The dilutions indicate recommended starting dilutions and the optimal dilutions or concentrations should be determined by the scientist.	

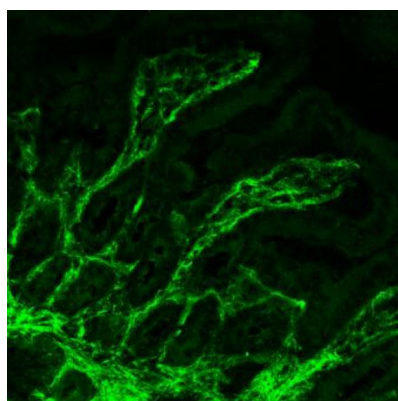
Properties

Form	Powder
Purification	Protein-G purified
Buffer	PBS
Reconstitution	Water
Concentration	0.1 - 1.0 mg/ml
Storage instruction	For continuous use, store undiluted antibody at 2-8°C for up to a week. For long-term storage, aliquot and store at -20°C or below. Storage in frost free freezers is not recommended. Avoid repeated freeze/thaw cycles. Suggest spin the vial prior to opening. The antibody solution should be gently mixed before use.

Bioinformation

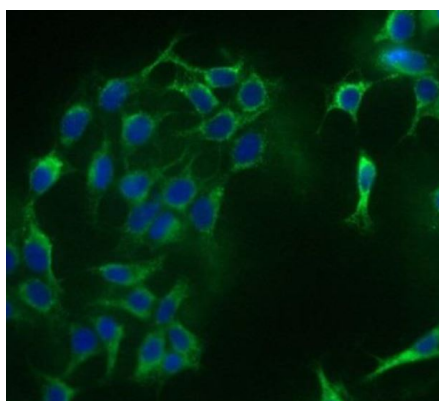
Gene Symbol	EMILIN1
Gene Full Name	Elastin Microfibril Interfacer 1
Background	This gene encodes an extracellular matrix glycoprotein that is characterized by an N-terminal microfibril interface domain, a coiled-coiled alpha-helical domain, a collagenous domain and a C-terminal globular C1q domain. The encoded protein associates with elastic fibers at the interface between elastin and microfibrils and may play a role in the development of elastic tissues including large blood vessels, dermis, heart and lung. [provided by RefSeq, Sep 2009]
Function	Involved in elastic and collagen fibers formation. It is required for EFEMP2 deposition into the extracellular matrix, and collagen network assembly and cross-linking via protein-lysine 6-oxidase/LOX activity (PubMed:36351433). _x000D_ May be responsible for anchoring smooth muscle cells to elastic fibers, and may be involved in the processes that regulate vessel assembly. Has cell adhesive capacity. [UniProt]
Calculated Mw	107 kDa
PTM	Disulfide bond; Glycoprotein. [UniProt]
Cellular Localization	Extracellular matrix; Secreted. [UniProt]

Images



ARG45382 anti-EMILIN1 antibody [1H2/G8] IHC-Fr image

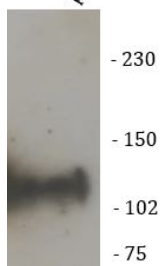
Immunohistochemistry: Frozen Human intestine stained with ARG45382 anti-EMILIN1 antibody [1H2/G8].



ARG45382 anti-EMILIN1 antibody [1H2/G8] ICC/IF image

Immunofluorescence: EMILIN1 transfected HEK293 cells stained with ARG45382 anti-EMILIN1 antibody [1H2/G8].

EMILIN1
recombinant
protein



ARG45382 anti-EMILIN1 antibody [1H2/G8] WB image

Western blot: EMILIN1 transfected HEK293 cells stained with ARG45382 anti-EMILIN1 antibody [1H2/G8].