

ARG45383 anti-EMILIN1 antibody [C11A8]

Package: 100 µg
Store at: -20°C

Summary

Product Description	Rat Monoclonal antibody recognizes EMILIN1
Tested Reactivity	Ms
Tested Application	ICC/IF, IHC-Fr, WB
Host	Rat
Clonality	Monoclonal
Clone	C11A8
Target Name	EMILIN1
Species	Mouse
Immunogen	Recombinant Mouse EMILIN1.
Conjugation	Un-conjugated
Alternate Names	EMILIN1; Elastin Microfibril Interfacer 1; EMILIN; Gp115; Elastin Microfibril Interface-Located Protein 1; DKFZp586M121; EMILIN-1; EMI; HMND10; ATBFS; HMN10

Application Instructions

Application table	Application	Dilution
	ICC/IF	Assay-dependent
	IHC-Fr	Assay-dependent
	WB	2-10 µg/ml
Application Note	* The dilutions indicate recommended starting dilutions and the optimal dilutions or concentrations should be determined by the scientist.	

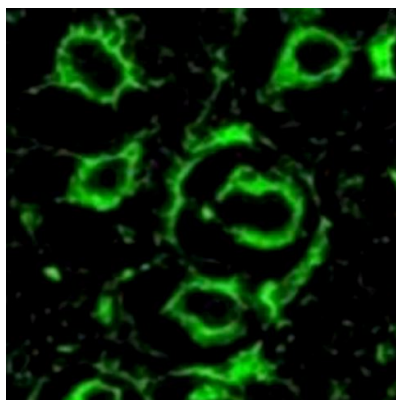
Properties

Form	Powder
Purification	Protein-G purified
Buffer	PBS
Reconstitution	Water
Concentration	0.1 - 1.0 mg/ml
Storage instruction	For continuous use, store undiluted antibody at 2-8°C for up to a week. For long-term storage, aliquot and store at -20°C or below. Storage in frost free freezers is not recommended. Avoid repeated freeze/thaw cycles. Suggest spin the vial prior to opening. The antibody solution should be gently mixed before use.
Note	For laboratory research only, not for drug, diagnostic or other use.

Bioinformation

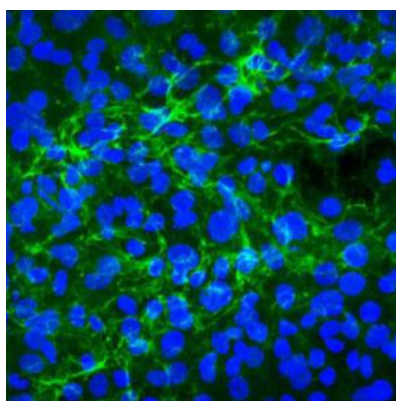
Gene Symbol	EMILIN1
Gene Full Name	Elastin Microfibril Interfacer 1
Background	This gene encodes an extracellular matrix glycoprotein that is characterized by an N-terminal microfibril interface domain, a coiled-coiled alpha-helical domain, a collagenous domain and a C-terminal globular C1q domain. The encoded protein associates with elastic fibers at the interface between elastin and microfibrils and may play a role in the development of elastic tissues including large blood vessels, dermis, heart and lung. [provided by RefSeq, Sep 2009]
Function	Involved in elastic and collagen fibers formation. It is required for EFEMP2 deposition into the extracellular matrix, and collagen network assembly and cross-linking via protein-lysine 6-oxidase/LOX activity (PubMed:36351433)._x000D_ May be responsible for anchoring smooth muscle cells to elastic fibers, and may be involved in the processes that regulate vessel assembly. Has cell adhesive capacity. [UniProt]
Calculated Mw	107 kDa
PTM	Disulfide bond; Glycoprotein. [UniProt]
Cellular Localization	Extracellular matrix; Secreted. [UniProt]

Images



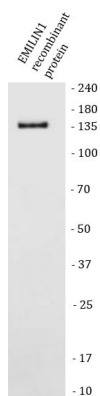
ARG45383 anti-EMILIN1 antibody [C11A8] IHC-Fr image

Immunohistochemistry: Frozen Mouse skin stained with ARG45383 anti-EMILIN1 antibody [C11A8].



ARG45383 anti-EMILIN1 antibody [C11A8] ICC/IF image

Immunofluorescence: Mouse lymphatic endothelial stained with ARG45383 anti-EMILIN1 antibody [C11A8].



ARG45383 anti-EMILIN1 antibody [C11A8] WB image

Western blot: EMILIN1 recombinant protein stained with ARG45383 anti-EMILIN1 antibody [C11A8].