

ARG45384 anti-EMILIN2 antibody [828B3B3]

Package: 100 µg
Store at: -20°C

Summary

Product Description	Mouse Monoclonal antibody recognizes EMILIN2
Tested Reactivity	Hu
Tested Application	IHC-Fr, WB
Host	Mouse
Clonality	Monoclonal
Clone	828B3B3
Isotype	IgG2, kappa
Target Name	EMILIN2
Species	Human
Immunogen	Recombinant Human EMILIN2.
Conjugation	Un-conjugated
Alternate Names	EMILIN2; Elastin Microfibril Interfacer 2; FOAP-10; Elastin Microfibril Interface-Located Protein 2; FLJ33200; EMILIN-2; Extracellular Glycoprotein EMILIN-2; Protein FOAP-10

Application Instructions

Application table	Application	Dilution
	IHC-Fr	Assay-dependent
	WB	2-5 µg/ml
Application Note	* The dilutions indicate recommended starting dilutions and the optimal dilutions or concentrations should be determined by the scientist.	

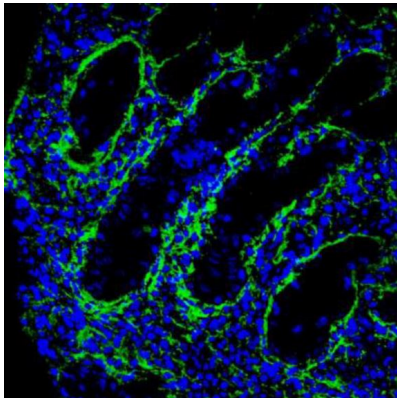
Properties

Form	Powder
Purification	Protein-G purified
Buffer	PBS
Reconstitution	Water
Concentration	0.1 - 1.0 mg/ml
Storage instruction	For continuous use, store undiluted antibody at 2-8°C for up to a week. For long-term storage, aliquot and store at -20°C or below. Storage in frost free freezers is not recommended. Avoid repeated freeze/thaw cycles. Suggest spin the vial prior to opening. The antibody solution should be gently mixed before use.
Note	For laboratory research only, not for drug, diagnostic or other use.

Bioinformation

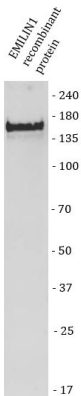
Gene Symbol	EMILIN2
Gene Full Name	Elastin Microfibril Interfacer 2
Background	Predicted to enable extracellular matrix constituent conferring elasticity. Involved in several processes, including positive regulation of angiogenesis; positive regulation of defense response to bacterium; and positive regulation of platelet aggregation. Located in extracellular region. [provided by Alliance of Genome Resources, Nov 2024]
Function	May be responsible for anchoring smooth muscle cells to elastic fibers, and may be involved not only in the formation of the elastic fiber, but also in the processes that regulate vessel assembly. Has cell adhesive capacity. [UniProt]
Calculated Mw	116 kDa
PTM	Disulfide bond; Glycoprotein. [UniProt]
Cellular Localization	Extracellular matrix; Secreted. [UniProt]

Images



ARG45384 anti-EMILIN2 antibody [828B3B3] IHC-Fr image

Immunohistochemistry: Frozen Human colon rectal stained with ARG45384 anti-EMILIN2 antibody [828B3B3].



ARG45384 anti-EMILIN2 antibody [828B3B3] WB image

Western blot: EMILIN2 recombinant protein stained with ARG45384 anti-EMILIN2 antibody [828B3B3].