

ARG45397 anti-PLS1 antibody

Package: 50 µg
Store at: -20°C

Summary

Product Description	Rabbit Polyclonal antibody recognizes PLS1
Tested Reactivity	Hu, Ms, Rat
Tested Application	FACS, ICC/IF, IHC-P, WB
Host	Rabbit
Clonality	Polyclonal
Isotype	IgG
Target Name	PLS1
Species	Human
Immunogen	Recombinant protein containing to human PLS1.
Conjugation	Un-conjugated
Alternate Names	PLS1; Plastin 1; Plastin-1; I-Plastin; Fimbrin; Intestine Specific Plastin; Intestine-Specific Plastin; Plastin 1 (I Isoform); I Plastin; DFNA76

Application Instructions

Application table	Application	Dilution
	FACS	1 - 3 µg/10 ⁶ cells
	ICC/IF	5 µg/ml
	IHC-P	2-5 µg/ml
	WB	0.25-0.5 µg/ml
Application Note	* The dilutions indicate recommended starting dilutions and the optimal dilutions or concentrations should be determined by the scientist.	
Observed Size	70 kDa	

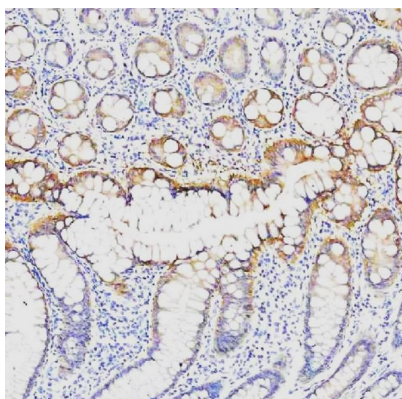
Properties

Form	Powder
Purification	Affinity purified
Buffer	0.2% Na ₂ HPO ₄ , 0.9% NaCl and 4% Trehalose.
Stabilizer	4% Trehalose
Concentration	0.5 mg/ml
Storage instruction	For continuous use, store undiluted antibody at 2-8°C for up to a week. For long-term storage, aliquot and store at -20°C or below. Storage in frost free freezers is not recommended. Avoid repeated freeze/thaw cycles. Suggest spin the vial prior to opening. The antibody solution should be gently mixed before use.

Bioinformation

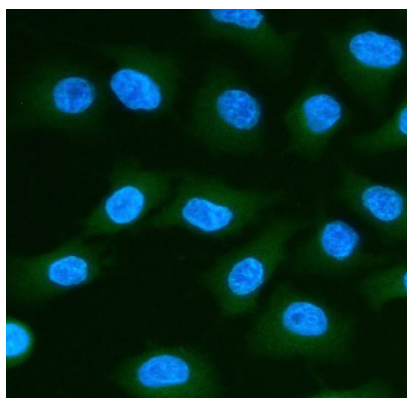
Gene Symbol	PLS1
Gene Full Name	Plastin 1
Background	Plastins are a family of actin-binding proteins that are conserved throughout eukaryote evolution and expressed in most tissues of higher eukaryotes. In humans, two ubiquitous plastin isoforms (L and T) have been identified. The protein encoded by this gene is a third distinct plastin isoform, which is specifically expressed at high levels in the small intestine. Alternatively spliced transcript variants varying in the 5' UTR, but encoding the same protein, have been found for this gene. A pseudogene of this gene is found on chromosome 11.[provided by RefSeq, Feb 2010]
Function	Actin-bundling protein. In the inner ear, it is required for stereocilia formation. Mediates liquid packing of actin filaments that is necessary for stereocilia to grow to their proper dimensions. [UniProt]
Calculated Mw	70 kDa
PTM	Acetylation; Phosphoprotein. [UniProt]
Cellular Localization	Cell projection; Cytoplasm. [UniProt]

Images



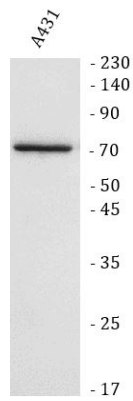
ARG45397 anti-PLS1 antibody IHC-P image

Immunohistochemistry: Human colon stained with ARG45397 anti-PLS1 antibody at 1 µg/ml dilution.



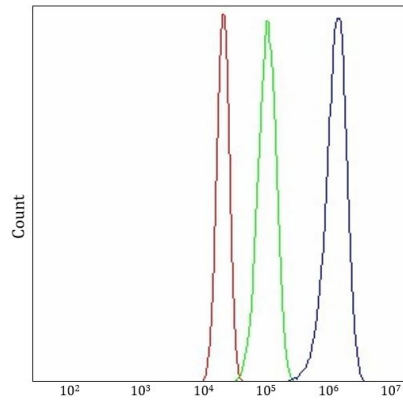
ARG45397 anti-PLS1 antibody ICC/IF image

Immunofluorescence: A549 stained with ARG45397 anti-PLS1 antibody at 5 µg/ml dilution.



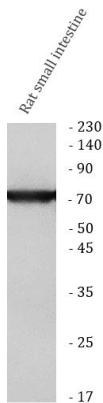
ARG45397 anti-PLS1 antibody WB image

Western blot: A431 stained with ARG45397 anti-PLS1 antibody at 0.5 $\mu\text{g}/\text{ml}$ dilution.



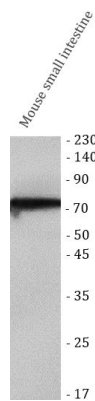
ARG45397 anti-PLS1 antibody FACS image

Flow Cytometry: RT4 stained with ARG45397 anti-PLS1 antibody at 1 $\mu\text{g}/10^6$ cells dilution.



ARG45397 anti-PLS1 antibody WB image

Western blot: Rat small intestine stained with ARG45397 anti-PLS1 antibody at 0.5 $\mu\text{g}/\text{ml}$ dilution.



ARG45397 anti-PLS1 antibody WB image

Western blot: Mouse small intestine stained with ARG45397 anti-PLS1 antibody at 0.5 $\mu\text{g}/\text{ml}$ dilution.