

## ARG45402 anti-SLC25A13/Citrin antibody

Package: 50 µg  
Store at: -20°C

### Summary

Product Description	Rabbit Polyclonal antibody recognizes SLC25A13/Citrin
Tested Reactivity	Hu, Rat
Tested Application	FACS, ICC/IF, IHC-P, WB
Host	Rabbit
Clonality	Polyclonal
Isotype	IgG
Target Name	SLC25A13/Citrin
Species	Human
Immunogen	Recombinant protein containing to human SLC25A13/Citrin.
Conjugation	Un-conjugated
Alternate Names	SLC25A13; Solute Carrier Family 25 Member 13; ARALAR2; Calcium-Binding Mitochondrial Carrier Protein Aralar2; Mitochondrial Aspartate Glutamate Carrier 2; CITRIN; Electrogenic Aspartate/Glutamate Antiporter SLC25A13, Mitochondrial; Solute Carrier Family 25 (Aspartate/Glutamate Carrier), Member 13; Citrullinemia Type II; ARALAR-Related Gene; CTLN2; Solute Carrier Family 25, Member 13 (Citrin); Citrin; NICCD

### Application Instructions

Application table	Application	Dilution
	FACS	1 - 3 µg/10 <sup>6</sup> cells
	ICC/IF	5 µg/ml
	IHC-P	2-5 µg/ml
	WB	0.25-0.5 µg/ml
Application Note	* The dilutions indicate recommended starting dilutions and the optimal dilutions or concentrations should be determined by the scientist.	
Observed Size	70 kDa	

### Properties

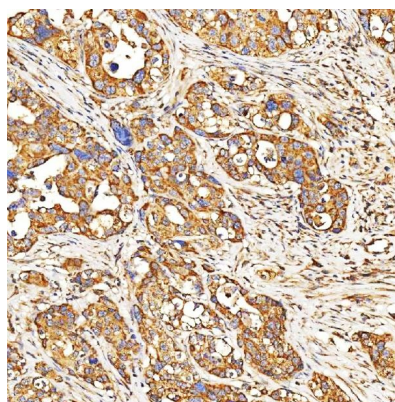
Form	Powder
Purification	Affinity purified
Buffer	0.2% Na <sub>2</sub> HPO <sub>4</sub> , 0.9% NaCl and 4% Trehalose.
Stabilizer	4% Trehalose
Concentration	0.5 mg/ml

Storage instruction	For continuous use, store undiluted antibody at 2-8°C for up to a week. For long-term storage, aliquot and store at -20°C or below. Storage in frost free freezers is not recommended. Avoid repeated freeze/thaw cycles. Suggest spin the vial prior to opening. The antibody solution should be gently mixed before use.
Note	For laboratory research only, not for drug, diagnostic or other use.

## Bioinformation

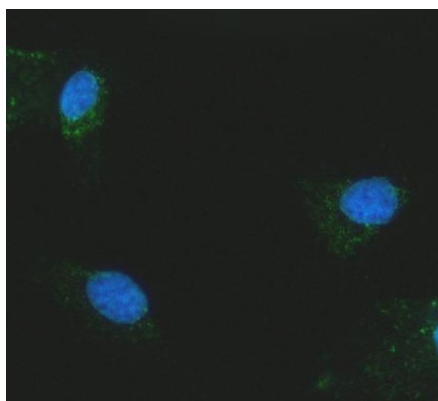
Gene Symbol	SLC25A13
Gene Full Name	Solute Carrier Family 25 Member 13
Background	This gene is a member of the mitochondrial carrier family. The encoded protein contains four EF-hand Ca(2+) binding motifs in the N-terminal domain, and localizes to mitochondria. The protein catalyzes the exchange of aspartate for glutamate and a proton across the inner mitochondrial membrane, and is stimulated by calcium on the external side of the inner mitochondrial membrane. Mutations in this gene result in citrullinemia, type II. Multiple transcript variants encoding different isoforms have been found for this gene. [provided by RefSeq, May 2009]
Function	Mitochondrial electrogenic aspartate/glutamate antiporter that favors efflux of aspartate and entry of glutamate and proton within the mitochondria as part of the malate-aspartate shuttle. [UniProt]
Calculated Mw	74 kDa
PTM	Acetylation; Methylation; Phosphoprotein. [UniProt]
Cellular Localization	Membrane; Mitochondrion; Mitochondrion inner membrane. [UniProt]

## Images



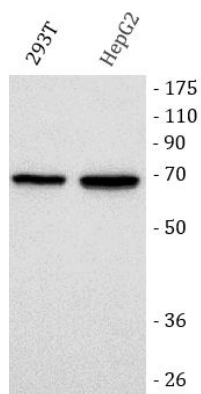
ARG45402 anti-SLC25A13/Citrin antibody IHC-P image

Immunohistochemistry: Human appendix adenocarcinoma stained with ARG45402 anti-SLC25A13/Citrin antibody at 2 µg/ml dilution.



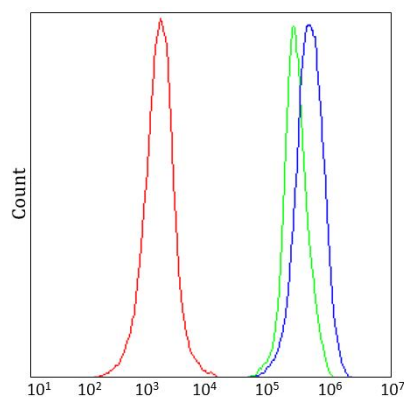
ARG45402 anti-SLC25A13/Citrin antibody ICC/IF image

Immunofluorescence: A549 stained with ARG45402 anti-SLC25A13/Citrin antibody at 5 µg/ml dilution.



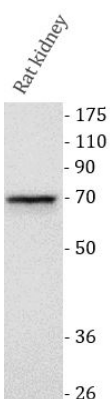
ARG45402 anti-SLC25A13/Citrin antibody WB image

Western blot: 293T and HepG2 stained with ARG45402 anti-SLC25A13/Citrin antibody at 0.5  $\mu\text{g}/\text{ml}$  dilution.



ARG45402 anti-SLC25A13/Citrin antibody FACS image

Flow Cytometry: JK stained with ARG45402 anti-SLC25A13/Citrin antibody at 1  $\mu\text{g}/10^6$  cells dilution.



ARG45402 anti-SLC25A13/Citrin antibody WB image

Western blot: Rat kidney stained with ARG45402 anti-SLC25A13/Citrin antibody at 0.5  $\mu\text{g}/\text{ml}$  dilution.