

ARG45404 anti-TTLL2 antibody

Package: 50 µg
Store at: -20°C

Summary

Product Description	Rabbit Polyclonal antibody recognizes TTLL2
Tested Reactivity	Hu, Ms, Rat
Tested Application	IHC-P, WB
Host	Rabbit
Clonality	Polyclonal
Isotype	IgG
Target Name	TTLL2
Species	Human
Immunogen	Recombinant protein containing to human TTLL2.
Conjugation	Un-conjugated
Alternate Names	TTLL2; Tubulin Tyrosine Ligase Like 2; DJ366N23.3; NYD-TSPG; C6orf104; Tubulin--Tyrosine Ligase-Like Protein 2; Probable Tubulin Polyglutamylase TTLL2; Testis-Specific Protein NYD-TSPG; Tubulin Tyrosine Ligase-Like Family, Member 2; Tubulin Tyrosine Ligase-Like Family Member 2; Chromosome 6 Open Reading Frame 104; EC

Application Instructions

Application table	Application	Dilution
	IHC-P	2-5 µg/ml
	WB	0.25-0.5 µg/ml
Application Note	* The dilutions indicate recommended starting dilutions and the optimal dilutions or concentrations should be determined by the scientist.	
Observed Size	70 kDa	

Properties

Form	Powder
Purification	Affinity purified
Buffer	0.2% Na ₂ HPO ₄ , 0.9% NaCl and 4% Trehalose.
Stabilizer	4% Trehalose
Concentration	0.5 mg/ml
Storage instruction	For continuous use, store undiluted antibody at 2-8°C for up to a week. For long-term storage, aliquot and store at -20°C or below. Storage in frost free freezers is not recommended. Avoid repeated freeze/thaw cycles. Suggest spin the vial prior to opening. The antibody solution should be gently mixed before use.

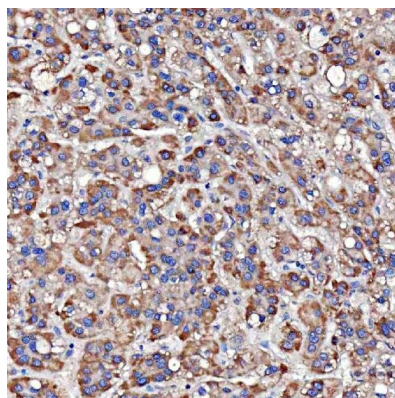
Note

For laboratory research only, not for drug, diagnostic or other use.

Bioinformation

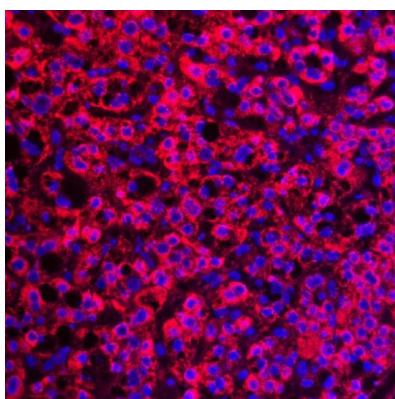
Gene Symbol	TLL2
Gene Full Name	Tubulin Tyrosine Ligase Like 2
Background	Predicted to enable tubulin binding activity and tubulin-glutamic acid ligase activity. Predicted to be involved in microtubule cytoskeleton organization. Predicted to be active in cilium. [provided by Alliance of Genome Resources, Nov 2024]
Function	Probable tubulin polyglutamylase that generates side chains of glutamate on the gamma-carboxyl group of specific glutamate residues within the C-terminal tail of target proteins. [UniProt]
Calculated Mw	67 kDa

Images



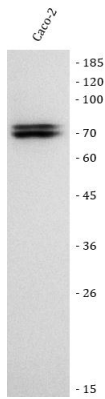
ARG45404 anti-TLL2 antibody IHC-P image

Immunohistochemistry: Human liver cancer stained with ARG45404 anti-TLL2 antibody at 2 µg/ml dilution.



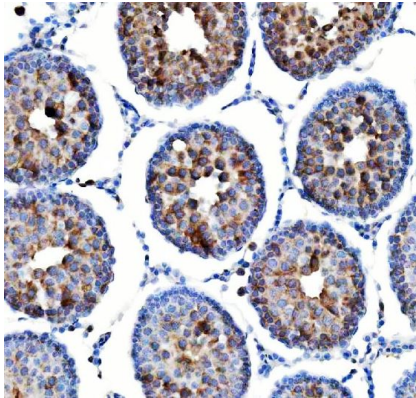
ARG45404 anti-TLL2 antibody ICC/IF image

Immunofluorescence: Human liver cancer stained with ARG45404 anti-TLL2 antibody at 5 µg/ml dilution.



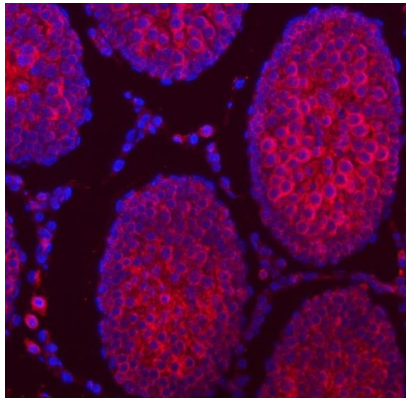
ARG45404 anti-TLL2 antibody WB image

Western blot: Caco-2 stained with ARG45404 anti-TLL2 antibody at 0.5 $\mu\text{g/ml}$ dilution.



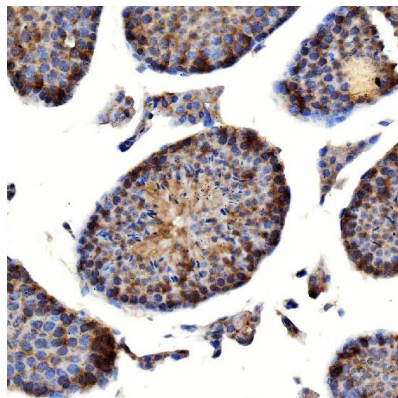
ARG45404 anti-TLL2 antibody IHC-P image

Immunohistochemistry: Rat testis stained with ARG45404 anti-TLL2 antibody at 2 $\mu\text{g/ml}$ dilution.



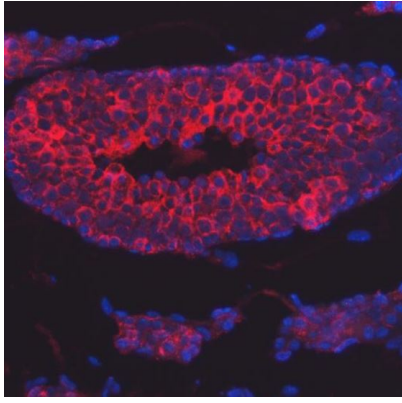
ARG45404 anti-TLL2 antibody ICC/IF image

Immunofluorescence: Rat testis stained with ARG45404 anti-TLL2 antibody at 5 $\mu\text{g/ml}$ dilution.



ARG45404 anti-TLL2 antibody IHC-P image

Immunohistochemistry: Mouse testis stained with ARG45404 anti-TLL2 antibody at 2 $\mu\text{g/ml}$ dilution.



ARG45404 anti-TLL2 antibody ICC/IF image

Immunofluorescence: Mouse testis stained with ARG45404 anti-TLL2 antibody at 5 μ g/ml dilution.