

ARG45408 anti-alpha Adaptin antibody

Package: 50 µg
Store at: -20°C

Summary

Product Description	Rabbit Polyclonal antibody recognizes alpha Adaptin
Tested Reactivity	Hu, Ms, Rat
Tested Application	FACS, ICC/IF, IHC-P, WB
Host	Rabbit
Clonality	Polyclonal
Isotype	IgG
Target Name	alpha Adaptin
Species	Human
Immunogen	Recombinant protein containing to human alpha Adaptin.
Conjugation	Un-conjugated
Alternate Names	AP2A2; Adaptor Related Protein Complex 2 Subunit Alpha 2; HYPJ; HIP9; KIAA0899; CLAPA2; ADTAB; Clathrin-Associated/Assembly/Adaptor Protein, Large, Alpha 2; Clathrin Assembly Protein Complex 2 Alpha-C Large Chain; Plasma Membrane Adaptor HA2/AP2 Adaptin Alpha C Subunit; Alpha-Adaptin C; Huntingtin Interacting Protein J; Adaptor Related Protein Complex 2 Alpha 2 Subunit; 100 KDa Coated Vesicle Protein C; Huntingtin-Interacting Protein 9; AP-2 Complex Subunit Alpha-2; Huntingtin Yeast Partner J; Adaptin, Alpha B; Alpha2-Adaptin; DKFZP564D1864; HIP-9; Adapter-Related Protein Complex 2 Subunit Alpha-2; Adaptor-Related Protein Complex 2 Subunit Alpha-2; Adaptor Protein Complex AP-2 Subunit Alpha-2; Huntingtin-Interacting Protein J; Alpha-Adaptin C

Application Instructions

Application table	Application	Dilution
	FACS	1 - 3 µg/10 ⁶ cells
	ICC/IF	5 µg/ml
	IHC-P	2-5 µg/ml
	WB	0.1-0.25 µg/ml
Application Note	* The dilutions indicate recommended starting dilutions and the optimal dilutions or concentrations should be determined by the scientist.	
Observed Size	104 kDa	

Properties

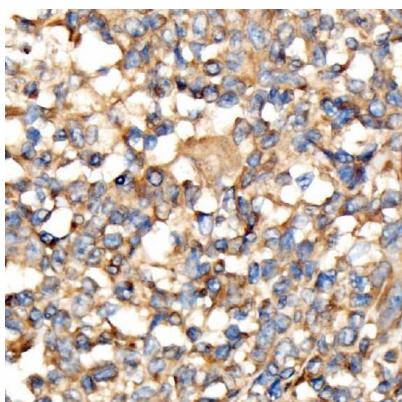
Form	Powder
Purification	Affinity purified
Buffer	0.2% Na ₂ HPO ₄ , 0.9% NaCl and 4% Trehalose.
Stabilizer	4% Trehalose

Concentration	0.5 mg/ml
Storage instruction	For continuous use, store undiluted antibody at 2-8°C for up to a week. For long-term storage, aliquot and store at -20°C or below. Storage in frost free freezers is not recommended. Avoid repeated freeze/thaw cycles. Suggest spin the vial prior to opening. The antibody solution should be gently mixed before use.
Note	For laboratory research only, not for drug, diagnostic or other use.

Bioinformation

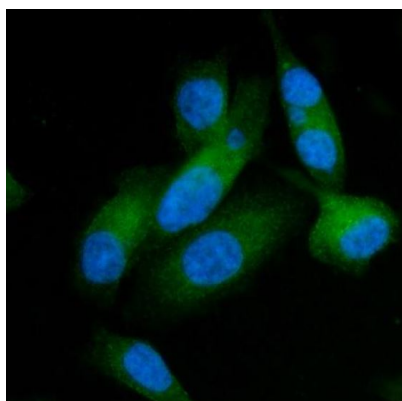
Gene Symbol	AP2A2
Gene Full Name	Adaptor Related Protein Complex 2 Subunit Alpha 2
Background	The protein encoded by this gene is a subunit of the AP-2 adaptor protein complex, which is involved in linking lipid and protein membrane components with the clathrin lattice. This interaction supports the formation of clathrin-coated vesicles, and the encoded subunit aids in the process by binding polyphosphoinositide-containing lipids in the cell membrane. [provided by RefSeq, Nov 2016]
Function	The AP-2 alpha subunit binds polyphosphoinositide-containing lipids, positioning AP-2 on the membrane. The AP-2 alpha subunit acts via its C-terminal appendage domain as a scaffolding platform for endocytic accessory proteins. The AP-2 alpha and AP-2 sigma subunits are thought to contribute to the recognition of the [ED]-X-X-X-L-[LI] motif. [UniProt]
Calculated Mw	104 kDa
Cellular Localization	Cell membrane; Membrane. [UniProt]

Images



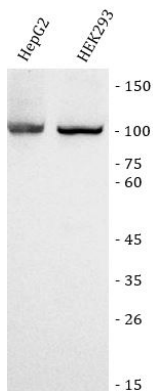
ARG45408 anti-alpha Adaptin antibody IHC-P image

Immunohistochemistry: Human lymphoma stained with ARG45408 anti-alpha Adaptin antibody at 2 µg/ml dilution.



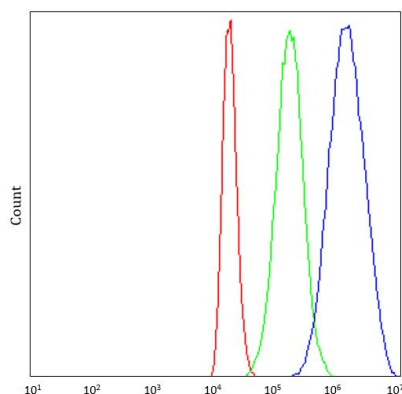
ARG45408 anti-alpha Adaptin antibody ICC/IF image

Immunofluorescence: PC-3 stained with ARG45408 anti-alpha Adaptin antibody at 5 µg/ml dilution.



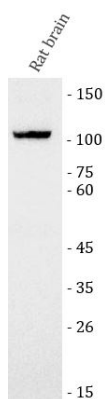
ARG45408 anti-alpha Adaptin antibody WB image

Western blot: HepG2 and HEK293 stained with ARG45408 anti-alpha Adaptin antibody at 0.25 $\mu\text{g}/\text{ml}$ dilution.



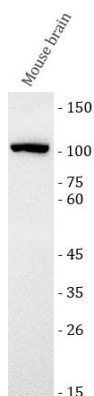
ARG45408 anti-alpha Adaptin antibody FACS image

Flow Cytometry: 293T stained with ARG45408 anti-alpha Adaptin antibody at 1 $\mu\text{g}/10^6$ cells dilution.



ARG45408 anti-alpha Adaptin antibody WB image

Western blot: Rat brain stained with ARG45408 anti-alpha Adaptin antibody at 0.25 $\mu\text{g}/\text{ml}$ dilution.



ARG45408 anti-alpha Adaptin antibody WB image

Western blot: Mouse brain stained with ARG45408 anti-alpha Adaptin antibody at 0.25 $\mu\text{g}/\text{ml}$ dilution.