

ARG45416 anti-Collagen VI alpha 2 antibody

Package: 50 µg
Store at: -20°C

Summary

Product Description	Rabbit Polyclonal antibody recognizes Collagen VI alpha 2
Tested Reactivity	Zfish
Tested Application	IHC-P, WB
Host	Rabbit
Clonality	Polyclonal
Isotype	IgG
Target Name	Collagen VI alpha 2
Species	Zebrafish
Immunogen	Recombinant protein containing to zebrafish Collagen VI alpha 2.
Conjugation	Un-conjugated
Alternate Names	COL6A2; Collagen Type VI Alpha 2 Chain; Collagen Alpha-2(VI) Chain; Human MRNA For Collagen VI Alpha-2 C-Terminal Globular Domain; Epididymis Secretory Sperm Binding Protein; Collagen VI, Alpha-2 Polypeptide; Collagen, Type VI, Alpha 2; Collagen Type VI Alpha 2; BTHLM1B; BTHLM1; PP3610; UCMD1B; UCMD1

Application Instructions

Application table	Application	Dilution
	IHC-P	2-5 µg/ml
	WB	0.25-0.5 µg/ml
Application Note	* The dilutions indicate recommended starting dilutions and the optimal dilutions or concentrations should be determined by the scientist.	
Observed Size	140 kDa	

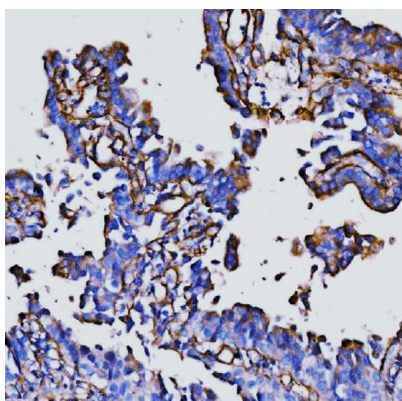
Properties

Form	Liquid
Purification	Affinity purified
Buffer	0.2% Na ₂ HPO ₄ , 0.9% NaCl and 4% Trehalose.
Stabilizer	4% Trehalose
Concentration	0.5 mg/ml
Storage instruction	For continuous use, store undiluted antibody at 2-8°C for up to a week. For long-term storage, aliquot and store at -20°C or below. Storage in frost free freezers is not recommended. Avoid repeated freeze/thaw cycles. Suggest spin the vial prior to opening. The antibody solution should be gently mixed before use.

Bioinformation

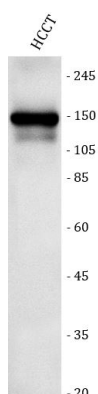
Gene Symbol	COL6A2
Gene Full Name	Collagen Type VI Alpha 2 Chain
Background	This gene encodes one of the three alpha chains of type VI collagen, a beaded filament collagen found in most connective tissues. The product of this gene contains several domains similar to von Willebrand Factor type A domains. These domains have been shown to bind extracellular matrix proteins, an interaction that explains the importance of this collagen in organizing matrix components. Mutations in this gene are associated with Bethlem myopathy and Ullrich scleroatonic muscular dystrophy. Three transcript variants have been identified for this gene. [provided by RefSeq, Jul 2008]
Function	Collagen VI acts as a cell-binding protein. [UniProt]
Calculated Mw	108 kDa
PTM	Glycoprotein; Hydroxylation; Phosphoprotein. [UniProt]
Cellular Localization	Extracellular matrix; Membrane; Secreted. [UniProt]

Images



ARG45416 anti-Collagen VI alpha 2 antibody IHC-P image

Immunohistochemistry: Human colonic adenocarcinoma stained with ARG45416 anti-Collagen VI alpha 2 antibody at 2 µg/ml dilution.



ARG45416 anti-Collagen VI alpha 2 antibody WB image

Western blot: HCCT stained with ARG45416 anti-Collagen VI alpha 2 antibody at 0.5 µg/ml dilution.