

## ARG45425 anti-FKBP15 antibody

Package: 50 µg  
Store at: -20°C

### Summary

Product Description	Rabbit Polyclonal antibody recognizes FKBP15
Tested Reactivity	Hu, Ms, Rat
Tested Application	FACS, ICC/IF, IHC-P, WB
Host	Rabbit
Clonality	Polyclonal
Isotype	IgG
Target Name	FKBP15
Species	Human
Immunogen	Recombinant protein containing to human FKBP15.
Conjugation	Un-conjugated
Alternate Names	FKBP15; FKBP Prolyl Isomerase Family Member 15; KIAA0674; WAFL; PPP1R76; FKBP133; Protein Phosphatase 1, Regulatory Subunit 76; FK506 Binding Protein 15, 133kDa; 133 KDa FK506-Binding Protein; WASP And FKBP-Like Protein; FK506-Binding Protein 15; 133 KDa FKBP; FKBP-133; FKBP-15; FK506-Binding Protein 133kDa; WASP- And FKBP-Like Protein; FK506 Binding Protein 15; FKBP Prolyl Isomerase 15

### Application Instructions

Application table	Application	Dilution
	FACS	1 - 3 µg/10 <sup>6</sup> cells
	ICC/IF	5 µg/ml
	IHC-P	2-5 µg/ml
	WB	0.25-0.5 µg/ml
Application Note	* The dilutions indicate recommended starting dilutions and the optimal dilutions or concentrations should be determined by the scientist.	
Observed Size	160 kDa	

### Properties

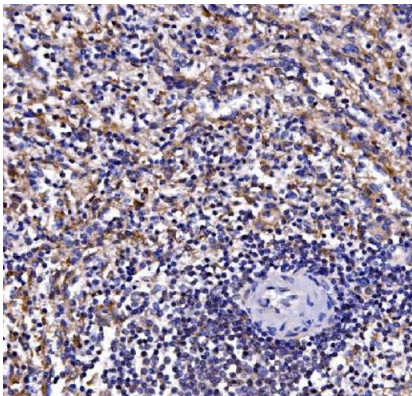
Form	Powder
Purification	Affinity purified
Buffer	0.2% Na <sub>2</sub> HPO <sub>4</sub> , 0.9% NaCl and 4% Trehalose.
Stabilizer	4% Trehalose
Concentration	0.5 mg/ml

Storage instruction	For continuous use, store undiluted antibody at 2-8°C for up to a week. For long-term storage, aliquot and store at -20°C or below. Storage in frost free freezers is not recommended. Avoid repeated freeze/thaw cycles. Suggest spin the vial prior to opening. The antibody solution should be gently mixed before use.
Note	For laboratory research only, not for drug, diagnostic or other use.

Bioinformation

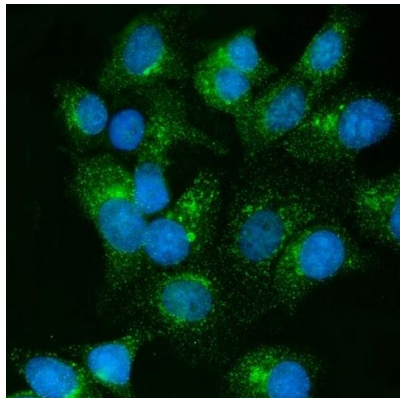
Gene Symbol	FKBP15
Gene Full Name	FKBP Prolyl Isomerase Family Member 15
Background	Predicted to enable actin binding activity and peptidyl-prolyl cis-trans isomerase activity. Predicted to be involved in endocytosis. Located in membrane. [provided by Alliance of Genome Resources, Nov 2024]
Function	May be involved in the cytoskeletal organization of neuronal growth cones. Seems to be inactive as a PPIase. [UniProt]
Calculated Mw	134 kDa
PTM	Acetylation; Phosphoprotein. [UniProt]
Cellular Localization	Cell projection; Cytoplasm; Endosome. [UniProt]

Images



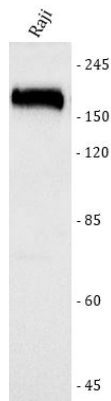
ARG45425 anti-FKBP15 antibody IHC-P image

Immunohistochemistry: Human spleen stained with ARG45425 anti-FKBP15 antibody at 2 µg/ml dilution.



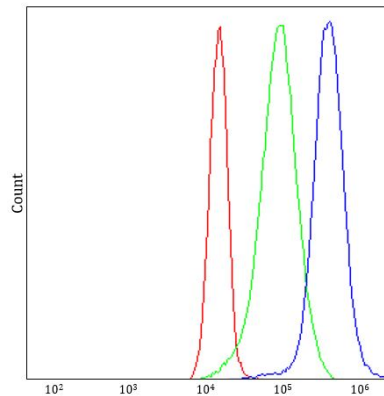
ARG45425 anti-FKBP15 antibody ICC/IF image

Immunofluorescence: MCF-7 stained with ARG45425 anti-FKBP15 antibody at 5 µg/ml dilution.



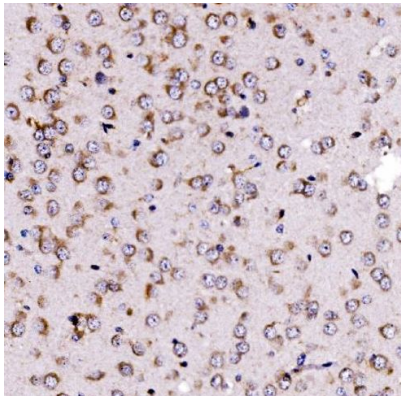
ARG45425 anti-FKBP15 antibody WB image

Western blot: Raji stained with ARG45425 anti-FKBP15 antibody at 0.5 µg/ml dilution.



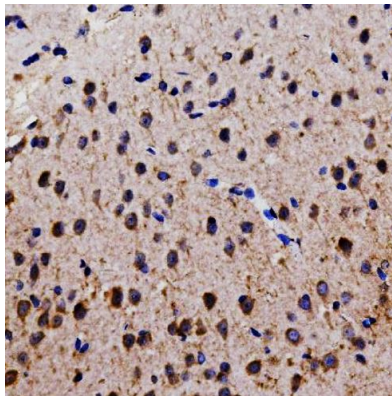
ARG45425 anti-FKBP15 antibody FACS image

Flow Cytometry: JK stained with ARG45425 anti-FKBP15 antibody at 1 µg/10<sup>6</sup> cells dilution.



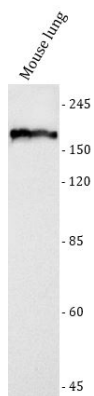
ARG45425 anti-FKBP15 antibody IHC-P image

Immunohistochemistry: Rat brain stained with ARG45425 anti-FKBP15 antibody at 2 µg/ml dilution.



ARG45425 anti-FKBP15 antibody IHC-P image

Immunohistochemistry: Mouse brain stained with ARG45425 anti-FKBP15 antibody at 2 µg/ml dilution.



#### ARG45425 anti-FKBP15 antibody WB image

Western blot: Mouse lung stained with ARG45425 anti-FKBP15 antibody at 0.5  $\mu\text{g}/\text{ml}$  dilution.