

ARG45431 anti-PCTAIRE1 antibody

Package: 50 µg
Store at: -20°C

Summary

Product Description	Rabbit Polyclonal antibody recognizes PCTAIRE1
Tested Reactivity	Hu, Ms, Rat
Tested Application	FACS, IHC-P, WB
Host	Rabbit
Clonality	Polyclonal
Isotype	IgG
Target Name	PCTAIRE1
Species	Human
Immunogen	Recombinant protein containing to human PCTAIRE1.
Conjugation	Un-conjugated
Alternate Names	CDK16; Cyclin Dependent Kinase 16; PCTAIRE1; PCTGAIRE; PCTAIRE; PCTK1; Serine/Threonine-Protein Kinase PCTAIRE-1; Cell Division Protein Kinase 16; PCTAIRE-Motif Protein Kinase 1; Cyclin-Dependent Kinase 16; EC 2.7.11.22 47; FLJ16665; Testis Secretory Sperm-Binding Protein Li 224n; Serine/Threonine-Protein Kinase; PCTAIRE Protein Kinase 1; EC 2.7.11 47

Application Instructions

Application table	Application	Dilution
	FACS	1 - 3 µg/10 ⁶ cells
	IHC-P	0.5-1 µg/ml
	WB	0.25-0.5 µg/ml
Application Note	* The dilutions indicate recommended starting dilutions and the optimal dilutions or concentrations should be determined by the scientist.	
Observed Size	56 kDa	

Properties

Form	Liquid
Purification	Affinity purified
Buffer	0.9% NaCl, 0.2% Na ₂ HPO ₄ , 0.05% Sodium azide and 4% Trehalose.
Preservative	0.05% Sodium azide
Stabilizer	4% Trehalose
Concentration	0.5 mg/ml
Storage instruction	For continuous use, store undiluted antibody at 2-8°C for up to a week. For long-term storage, aliquot and store at -20°C or below. Storage in frost free freezers is not recommended. Avoid repeated

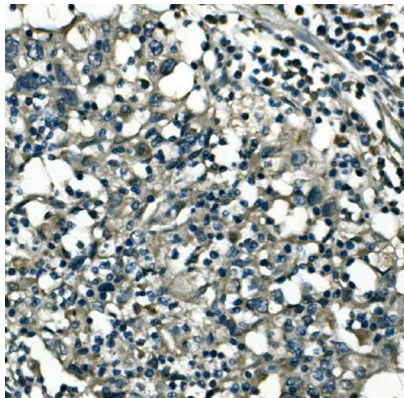
freeze/thaw cycles. Suggest spin the vial prior to opening. The antibody solution should be gently mixed before use.

Note For laboratory research only, not for drug, diagnostic or other use.

Bioinformation

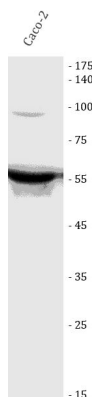
Gene Symbol	CDK16
Gene Full Name	Cyclin Dependent Kinase 16
Background	The protein encoded by this gene belongs to the <i>cdc2/cdkx</i> subfamily of the ser/thr family of protein kinases. It may play a role in signal transduction cascades in terminally differentiated cells; in exocytosis; and in transport of secretory cargo from the endoplasmic reticulum. This gene is thought to escape X inactivation. Alternative splicing results in multiple transcript variants encoding different isoforms. [provided by RefSeq, Dec 2009]
Function	Protein kinase that plays a role in vesicle-mediated transport processes and exocytosis. Regulates GH1 release by brain neurons. [UniProt]
Calculated Mw	56 kDa
PTM	Phosphoprotein. [UniProt]. [UniProt]. [UniProt]
Cellular Localization	Cell membrane; Cytoplasm; Cytoplasmic vesicle; Membrane; Synapse; Synaptosome. [UniProt]

Images



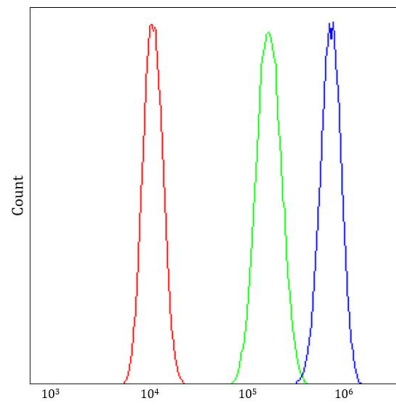
ARG45431 anti-PCTAIRE1 antibody IHC-P image

Immunohistochemistry: Human lung cancer stained with ARG45431 anti-PCTAIRE1 antibody at 1 µg/ml dilution.



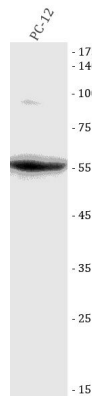
ARG45431 anti-PCTAIRE1 antibody WB image

Western blot: Caco-2 stained with ARG45431 anti-PCTAIRE1 antibody at 0.5 µg/ml dilution.



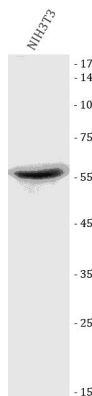
ARG45431 anti-PCTAIRE1 antibody FACS image

Flow Cytometry: U2OS stained with ARG45431 anti-PCTAIRE1 antibody at 1 $\mu\text{g}/10^6$ cells dilution.



ARG45431 anti-PCTAIRE1 antibody WB image

Western blot: PC-12 stained with ARG45431 anti-PCTAIRE1 antibody at 0.5 $\mu\text{g}/\text{ml}$ dilution.



ARG45431 anti-PCTAIRE1 antibody WB image

Western blot: NIH3T3 stained with ARG45431 anti-PCTAIRE1 antibody at 0.5 $\mu\text{g}/\text{ml}$ dilution.