

ARG45434 anti-KDEL2 antibody

Package: 50 µg
Store at: -20°C

Summary

Product Description	Rabbit Polyclonal antibody recognizes KDEL2
Tested Reactivity	Hu, Ms, Rat
Tested Application	FACS, ICC/IF, WB
Host	Rabbit
Clonality	Polyclonal
Isotype	IgG
Target Name	KDEL2
Species	Human
Immunogen	Recombinant protein containing to human KDEL2.
Conjugation	Un-conjugated
Alternate Names	POGLUT3; Protein O-Glucosyltransferase 3; KDEL2; Protein O-Xylosyltransferase POGLUT3; KDEL (Lys-Asp-Glu-Leu) Containing 2; KDEL Motif-Containing Protein 2; KDEL Motif Containing 2; MGC33424; EC 2.4.1.-; EC 2.4.2.-

Application Instructions

Application table	Application	Dilution
	FACS	1 - 3 µg/10 ⁶ cells
	ICC/IF	5 µg/ml
	WB	0.25-0.5 µg/ml
Application Note	* The dilutions indicate recommended starting dilutions and the optimal dilutions or concentrations should be determined by the scientist.	
Observed Size	68 kDa	

Properties

Form	Liquid
Purification	Affinity purified
Buffer	0.2% Na ₂ HPO ₄ , 0.9% NaCl and 4% Trehalose.
Stabilizer	4% Trehalose
Concentration	0.5 mg/ml
Storage instruction	For continuous use, store undiluted antibody at 2-8°C for up to a week. For long-term storage, aliquot and store at -20°C or below. Storage in frost free freezers is not recommended. Avoid repeated freeze/thaw cycles. Suggest spin the vial prior to opening. The antibody solution should be gently mixed before use.

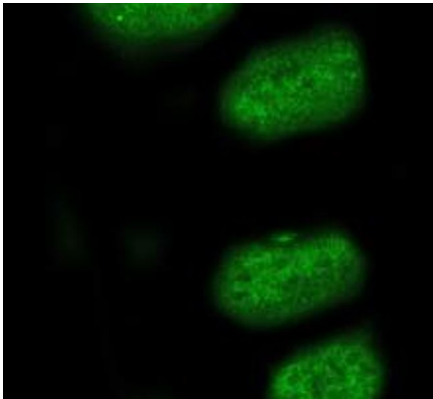
Note

For laboratory research only, not for drug, diagnostic or other use.

Bioinformation

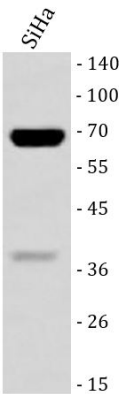
Gene Symbol	POGLUT3
Gene Full Name	Protein O-Glucosyltransferase 3
Background	Enables UDP-glucosyltransferase activity and UDP-xylosyltransferase activity. Involved in protein O-linked glycosylation via serine. Predicted to be located in endoplasmic reticulum lumen. Predicted to be active in endomembrane system. [provided by Alliance of Genome Resources, Nov 2024]
Function	Protein glucosyltransferase that catalyzes the transfer of glucose from UDP-glucose to a serine residue within the consensus sequence peptide C-X-N-T-X-G-S-F-X-C. [UniProt]
Calculated Mw	59 kDa
PTM	Glycoprotein. [UniProt]
Cellular Localization	Endoplasmic reticulum. [UniProt]

Images



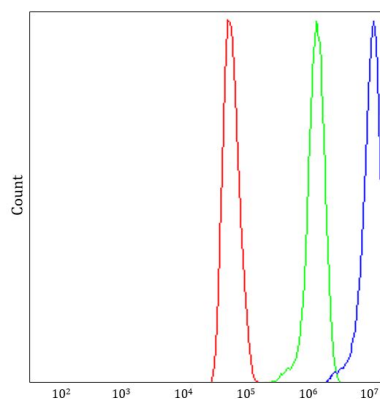
ARG45434 anti-KDEL2 antibody ICC/IF image

Immunofluorescence: U2OS stained with ARG45434 anti-KDEL2 antibody at 5 µg/ml dilution.



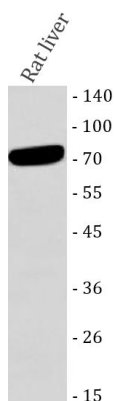
ARG45434 anti-KDEL2 antibody WB image

Western blot: SiHa stained with ARG45434 anti-KDEL2 antibody at 0.5 µg/ml dilution.



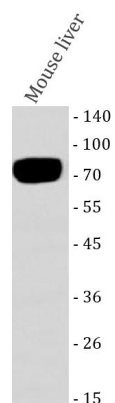
ARG45434 anti-KDEL2 antibody FACS image

Flow Cytometry: U251 stained with ARG45434 anti-KDEL2 antibody at $1\text{ }\mu\text{g}/10^6$ cells dilution.



ARG45434 anti-KDEL2 antibody WB image

Western blot: Rat liver stained with ARG45434 anti-KDEL2 antibody at $0.5\text{ }\mu\text{g}/\text{ml}$ dilution.



ARG45434 anti-KDEL2 antibody WB image

Western blot: Mouse liver stained with ARG45434 anti-KDEL2 antibody at $0.5\text{ }\mu\text{g}/\text{ml}$ dilution.