

ARG45435 anti-NHERF2 antibody

Package: 50 µg
Store at: -20°C

Summary

Product Description	Rabbit Polyclonal antibody recognizes NHERF2
Tested Reactivity	Hu, Ms, Rat
Tested Application	FACS, IHC-P, WB
Host	Rabbit
Clonality	Polyclonal
Isotype	IgG
Target Name	NHERF2
Species	Human
Immunogen	Recombinant protein containing to human NHERF2.
Conjugation	Un-conjugated
Alternate Names	SLC9A3R2; Tyrosine kinase activator protein 1; NHE3RF2; E3KARP; Na; +; OCTS2; NHERF-2; Solute carrier family 9 isoform A3 regulatory factor 2; Sodium-hydrogen exchanger regulatory factor 2; NHE3 kinase A regulatory protein E3KARP; NHERF2; SIP-1; SIP1; TKA-1; SRY-interacting protein 1

Application Instructions

Application table	Application	Dilution
	FACS	1 - 3 µg/10 ⁶ cells
	IHC-P	2-5 µg/ml
	WB	0.25-0.5 µg/ml
Application Note	* The dilutions indicate recommended starting dilutions and the optimal dilutions or concentrations should be determined by the scientist.	
Observed Size	45 kDa	

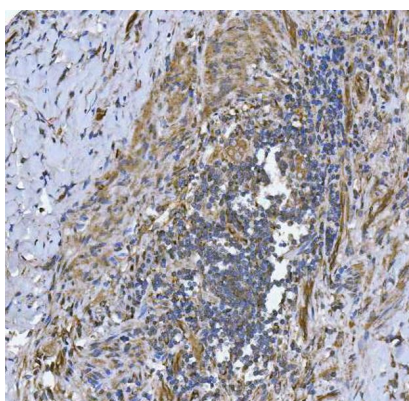
Properties

Form	Powder
Purification	Affinity purified
Buffer	0.2% Na ₂ HPO ₄ , 0.9% NaCl and 4% Trehalose.
Stabilizer	4% Trehalose
Concentration	0.5 mg/ml
Storage instruction	For continuous use, store undiluted antibody at 2-8°C for up to a week. For long-term storage, aliquot and store at -20°C or below. Storage in frost free freezers is not recommended. Avoid repeated freeze/thaw cycles. Suggest spin the vial prior to opening. The antibody solution should be gently mixed before use.

Bioinformation

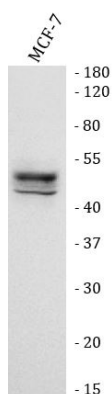
Gene Symbol	SLC9A3R2
Gene Full Name	NHERF Family PDZ Scaffold Protein 2
Background	This gene encodes a member of the NHERF family of PDZ scaffolding proteins. These proteins mediate many cellular processes by binding to and regulating the membrane expression and protein-protein interactions of membrane receptors and transport proteins. The encoded protein plays a role in intestinal sodium absorption by regulating the activity of the sodium/hydrogen exchanger 3, and may also regulate the cystic fibrosis transmembrane regulator (CFTR) ion channel. Alternatively spliced transcript variants encoding multiple isoforms have been observed for this gene. [provided by RefSeq, Nov 2011]
Function	Scaffold protein that connects plasma membrane proteins with members of the ezrin/moesin/radixin family and thereby helps to link them to the actin cytoskeleton and to regulate their surface expression. Necessary for cAMP-mediated phosphorylation and inhibition of SLC9A3. [UniProt]
Calculated Mw	37 kDa
PTM	Phosphoprotein. [UniProt]
Cellular Localization	Cell membrane; Membrane; Nucleus. [UniProt]

Images



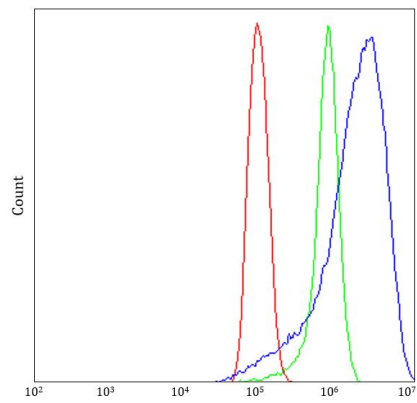
ARG45435 anti-NHERF2 antibody IHC-P image

Immunohistochemistry: Human colorectal adenocarcinoma stained with ARG45435 anti-NHERF2 antibody at 2 µg/ml dilution.



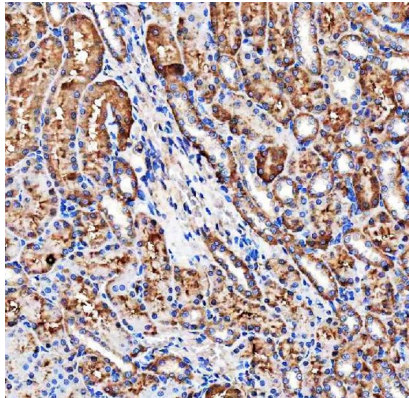
ARG45435 anti-NHERF2 antibody WB image

Western blot: MCF-7 stained with ARG45435 anti-NHERF2 antibody at 0.5 µg/ml dilution.



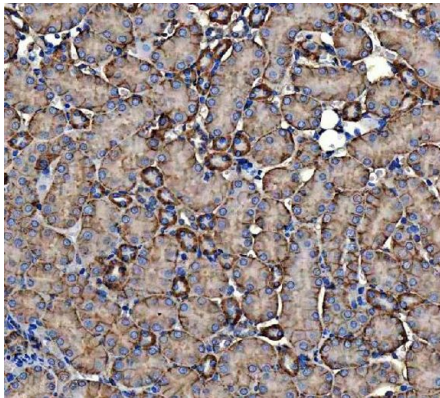
ARG45435 anti-NHERF2 antibody FACS image

Flow Cytometry: PC-3 stained with ARG45435 anti-NHERF2 antibody at $1 \mu\text{g}/10^6$ cells dilution.



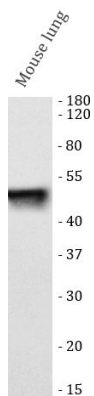
ARG45435 anti-NHERF2 antibody IHC-P image

Immunohistochemistry: Rat kidney stained with ARG45435 anti-NHERF2 antibody at $2 \mu\text{g}/\text{ml}$ dilution.



ARG45435 anti-NHERF2 antibody IHC-P image

Immunohistochemistry: Mouse kidney stained with ARG45435 anti-NHERF2 antibody at $2 \mu\text{g}/\text{ml}$ dilution.



ARG45435 anti-NHERF2 antibody WB image

Western blot: Mouse lung stained with ARG45435 anti-NHERF2 antibody at $0.5 \mu\text{g}/\text{ml}$ dilution.