

## ARG45445 anti-UBA6 antibody

Package: 50 µg  
Store at: -20°C

### Summary

Product Description	Rabbit Polyclonal antibody recognizes UBA6
Tested Reactivity	Hu, Ms, Rat, Mk
Tested Application	FACS, IHC-P, WB
Host	Rabbit
Clonality	Polyclonal
Isotype	IgG
Target Name	UBA6
Species	Human
Immunogen	Recombinant protein containing to human UBA6.
Conjugation	Un-conjugated
Alternate Names	UBA6; Ubiquitin Like Modifier Activating Enzyme 6; UBE1L2; Ubiquitin-Activating Enzyme E1-Like Protein 2; Ubiquitin-Like Modifier-Activating Enzyme 6; Ubiquitin-Activating Enzyme E1-Like 2; UBA6, Ubiquitin-Activating Enzyme E1; Ubiquitin-Activating Enzyme 6; Monocyte Protein 4; FLJ10808; E1-L2; MOP-4; Ubiquitin-Like Modifier Activating Enzyme 6; EC 6.2.1.45; MOP4

### Application Instructions

Application table	Application	Dilution
	FACS	1 - 3 µg/10 <sup>6</sup> cells
	IHC-P	2-5 µg/ml
	WB	0.25-0.5 µg/ml
Application Note	* The dilutions indicate recommended starting dilutions and the optimal dilutions or concentrations should be determined by the scientist.	
Observed Size	118 kDa	

### Properties

Form	Powder
Purification	Affinity purified
Buffer	0.2% Na <sub>2</sub> HPO <sub>4</sub> , 0.9% NaCl and 4% Trehalose.
Stabilizer	4% Trehalose
Concentration	0.5 mg/ml
Storage instruction	For continuous use, store undiluted antibody at 2-8°C for up to a week. For long-term storage, aliquot and store at -20°C or below. Storage in frost free freezers is not recommended. Avoid repeated freeze/thaw cycles. Suggest spin the vial prior to opening. The antibody solution should be gently mixed

before use.

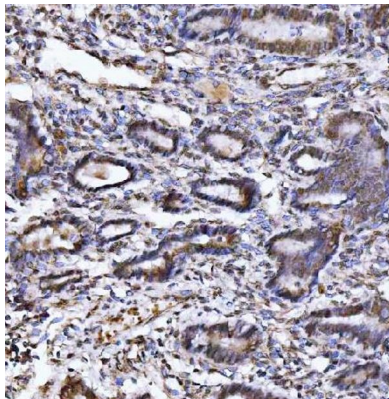
#### Note

For laboratory research only, not for drug, diagnostic or other use.

## Bioinformation

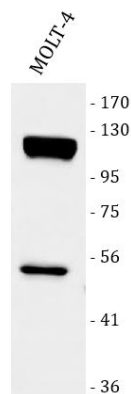
Gene Symbol	UBA6
Gene Full Name	Ubiquitin Like Modifier Activating Enzyme 6
Background	Modification of proteins with ubiquitin (UBB; MIM 191339) or ubiquitin-like proteins controls many signaling networks and requires a ubiquitin-activating enzyme (E1), a ubiquitin conjugating enzyme (E2), and a ubiquitin protein ligase (E3). UBE1L2 is an E1 enzyme that initiates the activation and conjugation of ubiquitin-like proteins (Jin et al., 2007 [PubMed 17597759]).[supplied by OMIM, Mar 2008]
Function	Activates ubiquitin by first adenylating its C-terminal glycine residue with ATP, and thereafter linking this residue to the side chain of a cysteine residue in E1, yielding a ubiquitin-E1 thioester and free AMP. Specific for ubiquitin, does not activate ubiquitin-like peptides. Differs from UBE1 in its specificity for substrate E2 charging. Does not charge cell cycle E2s, such as CDC34. Essential for embryonic development. Required for UBD/FAT10 conjugation. Isoform 2 may play a key role in ubiquitin system and may influence spermatogenesis and male fertility. [UniProt]
Calculated Mw	118 kDa
PTM	Acetylation; Phosphoprotein. [UniProt]
Cellular Localization	Cytoplasm. [UniProt]

## Images



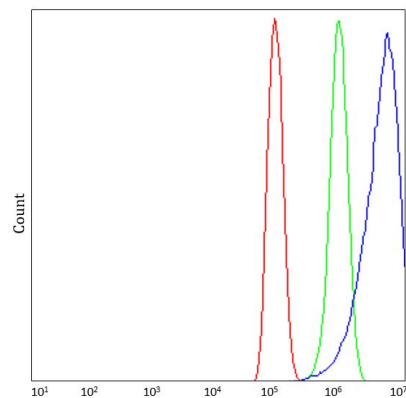
ARG45445 anti-UBA6 antibody IHC-P image

Immunohistochemistry: Human cervical cancer stained with ARG45445 anti-UBA6 antibody at 2 µg/ml dilution.



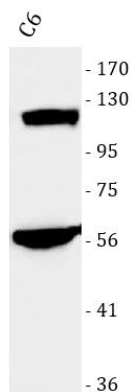
ARG45445 anti-UBA6 antibody WB image

Western blot: MOLT-4 stained with ARG45445 anti-UBA6 antibody at 0.5 µg/ml dilution.



#### ARG45445 anti-UBA6 antibody FACS image

Flow Cytometry: PC-3 stained with ARG45445 anti-UBA6 antibody at 1  $\mu\text{g}/10^6$  cells dilution.



#### ARG45445 anti-UBA6 antibody WB image

Western blot: C6 stained with ARG45445 anti-UBA6 antibody at 0.5  $\mu\text{g}/\text{ml}$  dilution.



#### ARG45445 anti-UBA6 antibody WB image

Western blot: NIH/3T3 stained with ARG45445 anti-UBA6 antibody at 0.5  $\mu\text{g}/\text{ml}$  dilution.



#### ARG45445 anti-UBA6 antibody WB image

Western blot: COS-7 stained with ARG45445 anti-UBA6 antibody at 0.5  $\mu\text{g}/\text{ml}$  dilution.