

## ARG45451 anti-ZO2 antibody

Package: 50 µg  
Store at: -20°C

### Summary

Product Description	Rabbit Polyclonal antibody recognizes ZO2
Tested Reactivity	Hu, Ms, Rat
Tested Application	FACS, ICC/IF, IHC-Fr, IHC-P, WB
Host	Rabbit
Clonality	Polyclonal
Isotype	IgG
Target Name	ZO2
Species	Human
Immunogen	Synthetic peptide corresponding to C-terminal region of human ZO2.
Conjugation	Un-conjugated
Alternate Names	TJP2; X104; DFNA51; Tight junction protein ZO-2; C9DUPq21.11; Zonula occludens protein 2; ZO2; Zona occludens protein 2; PFIC4; DUP9q21.11; Tight junction protein 2

### Application Instructions

Application table	Application	Dilution
	FACS	1 - 3 µg/10 <sup>6</sup> cells
	ICC/IF	5 µg/ml
	IHC-Fr	0.5-1 µg/ml
	IHC-P	0.5-1 µg/ml
	WB	0.1-0.5 µg/ml
	Application Note	* The dilutions indicate recommended starting dilutions and the optimal dilutions or concentrations should be determined by the scientist.
Observed Size	60 kDa	

### Properties

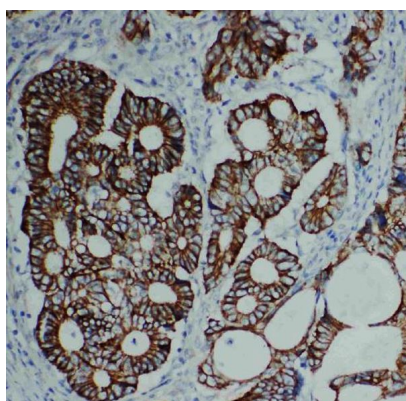
Form	Powder
Purification	Affinity purified
Buffer	0.9% NaCl, 0.2% Na <sub>2</sub> HPO <sub>4</sub> , 0.01% Sodium azide and 4% Trehalose.
Preservative	0.01% Sodium azide
Stabilizer	4% Trehalose
Concentration	0.5 mg/ml

Storage instruction	For continuous use, store undiluted antibody at 2-8°C for up to a week. For long-term storage, aliquot and store at -20°C or below. Storage in frost free freezers is not recommended. Avoid repeated freeze/thaw cycles. Suggest spin the vial prior to opening. The antibody solution should be gently mixed before use.
Note	For laboratory research only, not for drug, diagnostic or other use.

## Bioinformation

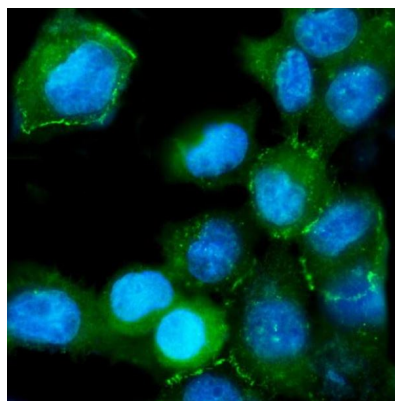
Gene Symbol	TJP2
Gene Full Name	tight junction protein 2
Background	This gene encodes a zonula occludens that is a member of the membrane-associated guanylate kinase homolog family. The encoded protein functions as a component of the tight junction barrier in epithelial and endothelial cells and is necessary for proper assembly of tight junctions. Mutations in this gene have been identified in patients with hypercholanemia, and genomic duplication of a 270 kb region including this gene causes autosomal dominant deafness-51. Alternatively spliced transcripts encoding multiple isoforms have been observed for this gene. [provided by RefSeq, Nov 2011]
Function	Plays a role in tight junctions and adherens junctions. [UniProt]
Calculated Mw	134 kDa
PTM	Phosphoprotein. [UniProt]
Cellular Localization	Cell junction; Cell membrane; Membrane; Nucleus; Tight junction. [UniProt]

## Images



ARG45451 anti-ZO2 antibody IHC-P image

Immunohistochemistry: Human intestinal cancer stained with ARG45451 anti-ZO2 antibody at 1 µg/ml dilution.



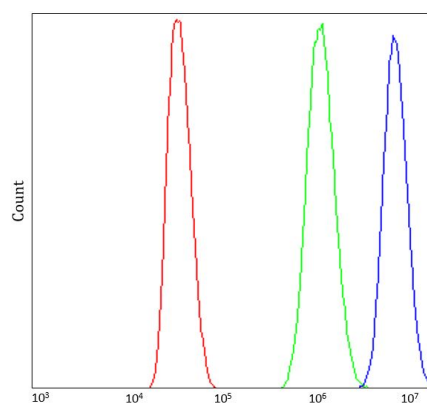
ARG45451 anti-ZO2 antibody ICC/IF image

Immunofluorescence: A431 stained with ARG45451 anti-ZO2 antibody at 5 µg/ml dilution.



ARG45451 anti-ZO2 antibody WB image

Western blot: RT4 and A431 stained with ARG45451 anti-ZO2 antibody at 0.5  $\mu\text{g}/\text{ml}$  dilution.



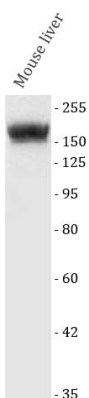
ARG45451 anti-ZO2 antibody FACS image

Flow Cytometry: MCF-7 stained with ARG45451 anti-ZO2 antibody at 1  $\mu\text{g}/10^6$  cells dilution.



ARG45451 anti-ZO2 antibody WB image

Western blot: RH35 stained with ARG45451 anti-ZO2 antibody at 0.5  $\mu\text{g}/\text{ml}$  dilution.



ARG45451 anti-ZO2 antibody WB image

Western blot: Mouse liver stained with ARG45451 anti-ZO2 antibody at 0.5  $\mu\text{g}/\text{ml}$  dilution.