

## ARG45463 anti-SEC61G antibody

Package: 50 µg  
Store at: -20°C

### Summary

Product Description	Rabbit Polyclonal antibody recognizes SEC61G
Tested Reactivity	Hu, Ms, Rat
Tested Application	IHC-P, WB
Specificity	SEC61G
Host	Rabbit
Clonality	Polyclonal
Isotype	IgG
Target Name	SEC61G
Species	Human
Immunogen	Recombinant protein containing to human SEC61G.
Conjugation	Un-conjugated
Alternate Names	SEC61G ; SEC61 Translocon Subunit Gamma; SSS1; Protein Transport Protein Sec61 Subunit Gamma; Sec61 Gamma Subunit; Protein Transport Protein SEC61 Gamma Subunit; SEC61 Translocon Gamma Subunit

### Application Instructions

Application table	Application	Dilution
	IHC-P	2-5 µg/ml
	WB	0.25-0.5 µg/ml
Application Note	* The dilutions indicate recommended starting dilutions and the optimal dilutions or concentrations should be determined by the scientist.	
Observed Size	12 kDa	

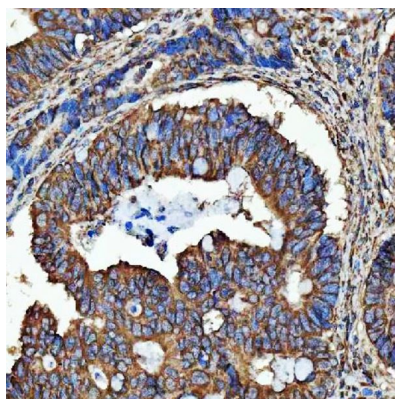
### Properties

Form	Powder
Purification	Affinity purified
Buffer	0.2% Na2HPO4, 0.9% NaCl and 4% Trehalose.
Stabilizer	4% Trehalose
Concentration	0.5 mg/ml
Storage instruction	For continuous use, store undiluted antibody at 2-8°C for up to a week. For long-term storage, aliquot and store at -20°C or below. Storage in frost free freezers is not recommended. Avoid repeated freeze/thaw cycles. Suggest spin the vial prior to opening. The antibody solution should be gently mixed before use.

## Bioinformation

Gene Symbol	SEC61G
Gene Full Name	SEC61 Translocon Subunit Gamma
Background	The Sec61 complex is the central component of the protein translocation apparatus of the endoplasmic reticulum (ER) membrane. Oligomers of the Sec61 complex form a transmembrane channel where proteins are translocated across and integrated into the ER membrane. This complex consists of three membrane proteins- alpha, beta, and gamma. This gene encodes the gamma-subunit protein. Alternatively spliced transcript variants encoding the same protein have been identified. [provided by RefSeq, Jul 2008]
Function	Component of SEC61 channel-forming translocon complex that mediates transport of signal peptide-containing precursor polypeptides across the endoplasmic reticulum (ER). [UniProt]
Calculated Mw	8 kDa
PTM	Acetylation; Phosphoprotein. [UniProt]
Cellular Localization	Endoplasmic reticulum; Membrane. [UniProt]

## Images



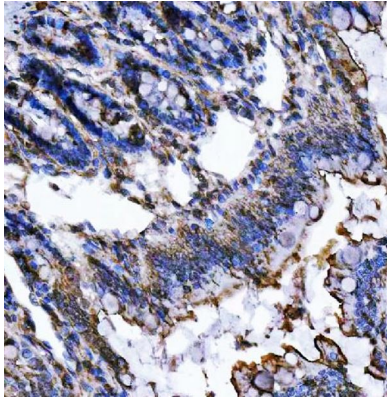
ARG45463 anti-SEC61G antibody IHC-P image

Immunohistochemistry: Human colorectal adenocarcinoma stained with ARG45463 anti-SEC61G antibody at 2 µg/ml dilution.



ARG45463 anti-SEC61G antibody WB image

Western blot: HeLa stained with ARG45463 anti-SEC61G antibody at 0.5 µg/ml dilution.



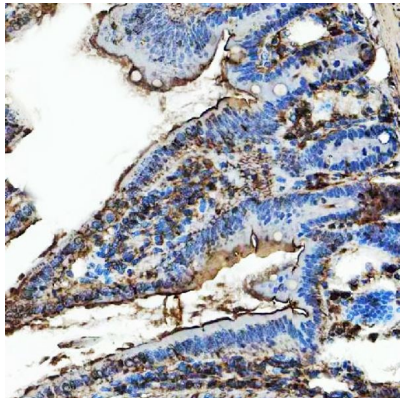
ARG45463 anti-SEC61G antibody IHC-P image

Immunohistochemistry: Rat colon stained with ARG45463 anti-SEC61G antibody at 2 µg/ml dilution.



ARG45463 anti-SEC61G antibody WB image

Western blot: Rat liver stained with ARG45463 anti-SEC61G antibody at 0.5 µg/ml dilution.



ARG45463 anti-SEC61G antibody IHC-P image

Immunohistochemistry: Mouse colon stained with ARG45463 anti-SEC61G antibody at 2 µg/ml dilution.