

ARG45465 anti-LARG antibody

Package: 50 µg
Store at: -20°C

Summary

Product Description	Rabbit Polyclonal antibody recognizes LARG
Tested Reactivity	Hu, Ms, Rat
Tested Application	FACS, ICC/IF, IHC-P, WB
Specificity	LARG
Host	Rabbit
Clonality	Polyclonal
Isotype	IgG
Target Name	LARG
Species	Human
Immunogen	Recombinant protein containing to human LARG.
Conjugation	Un-conjugated
Alternate Names	ARHGEF12; Rho Guanine Nucleotide Exchange Factor 12; LARG; KIAA0382; Rho Guanine Nucleotide Exchange Factor (GEF) 12; Leukemia-Associated RhoGEF; Leukemia-Associated Rho Guanine Nucleotide Exchange Factor; KMT2A/ARHGEF12 Fusion Protein; PRO2792

Application Instructions

Application table	Application	Dilution
	FACS	1 - 3 µg/10 ⁶ cells
	ICC/IF	5 µg/ml
	IHC-P	2-5 µg/ml
	WB	0.25-0.5 µg/ml
Application Note	* The dilutions indicate recommended starting dilutions and the optimal dilutions or concentrations should be determined by the scientist.	
Observed Size	220 kDa	

Properties

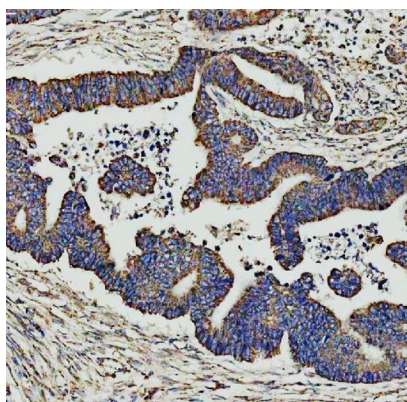
Form	Powder
Purification	Affinity purified
Buffer	0.2% Na ₂ HPO ₄ , 0.9% NaCl and 4% Trehalose.
Stabilizer	4% Trehalose
Concentration	0.5 mg/ml

Storage instruction	For continuous use, store undiluted antibody at 2-8°C for up to a week. For long-term storage, aliquot and store at -20°C or below. Storage in frost free freezers is not recommended. Avoid repeated freeze/thaw cycles. Suggest spin the vial prior to opening. The antibody solution should be gently mixed before use.
Note	For laboratory research only, not for drug, diagnostic or other use.

Bioinformation

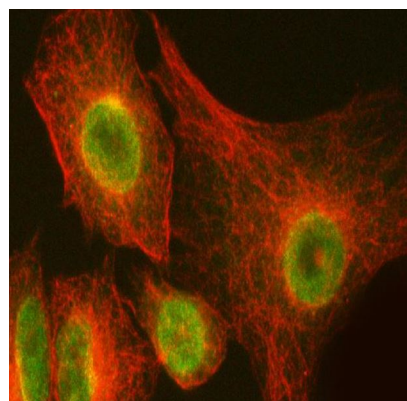
Gene Symbol	ARHGEF12
Gene Full Name	Rho Guanine Nucleotide Exchange Factor 12
Background	Rho GTPases play a fundamental role in numerous cellular processes that are initiated by extracellular stimuli working through G protein-coupled receptors. The encoded protein may form a complex with G proteins and stimulate Rho-dependent signals. This protein has been observed to form a myeloid/lymphoid fusion partner in acute myeloid leukemia. Three transcript variants encoding different isoforms have been found for this gene. [provided by RefSeq, Jul 2014]
Function	May play a role in the regulation of RhoA GTPase by guanine nucleotide-binding alpha-12 (GNA12) and alpha-13 (GNA13). Acts as guanine nucleotide exchange factor (GEF) for RhoA GTPase and may act as GTPase-activating protein (GAP) for GNA12 and GNA13. [UniProt]
Calculated Mw	173 kDa
PTM	Acetylation; Phosphoprotein. [UniProt]
Cellular Localization	Cytoplasm; Membrane. [UniProt]

Images



ARG45465 anti-LARG antibody IHC-P image

Immunohistochemistry: Human colorectal adenocarcinoma stained with ARG45465 anti-LARG antibody at 2 µg/ml dilution.



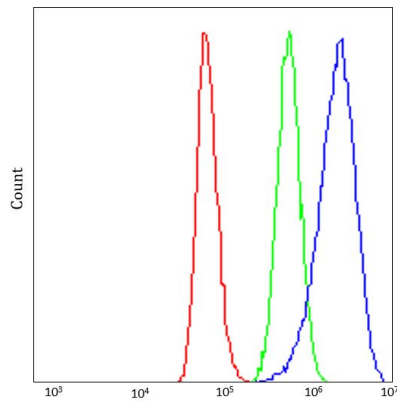
ARG45465 anti-LARG antibody ICC/IF image

Immunofluorescence: A549 stained with ARG45465 anti-LARG antibody at 5 µg/ml dilution.



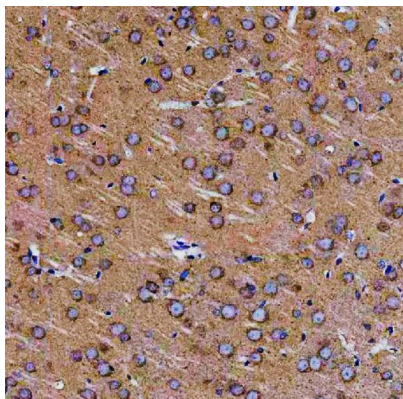
ARG45465 anti-LARG antibody WB image

Western blot: HeLa stained with ARG45465 anti-LARG antibody at 0.5 µg/ml dilution.



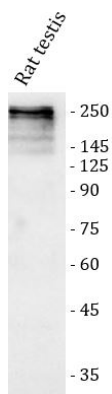
ARG45465 anti-LARG antibody FACS image

Flow Cytometry: HepG2 stained with ARG45465 anti-LARG antibody at 1 µg/10⁶ cells dilution.



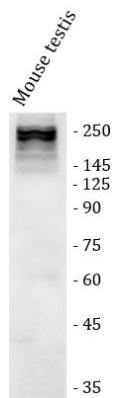
ARG45465 anti-LARG antibody IHC-P image

Immunohistochemistry: Rat brain stained with ARG45465 anti-LARG antibody at 2 µg/ml dilution.



ARG45465 anti-LARG antibody WB image

Western blot: Rat testis stained with ARG45465 anti-LARG antibody at 0.5 µg/ml dilution.



ARG45465 anti-LARG antibody WB image

Western blot: Mouse testis stained with ARG45465 anti-LARG antibody at 0.5 µg/ml dilution.