

## ARG45469 anti-MAP4K5 antibody

Package: 50 µg  
Store at: -20°C

### Summary

Product Description	Rabbit Polyclonal antibody recognizes MAP4K5
Tested Reactivity	Hu
Tested Application	ICC/IF, IHC-P, WB
Specificity	MAP4K5
Host	Rabbit
Clonality	Polyclonal
Isotype	IgG
Target Name	MAP4K5
Species	Human
Immunogen	Synthetic peptide corresponding to N-terminal region of human MAP4K5.
Conjugation	Un-conjugated
Alternate Names	MAP4K5; Mitogen-Activated Protein Kinase Kinase Kinase Kinase 5; KHS; KHS1; GCKR; MAPK/ERK Kinase Kinase Kinase 5; Kinase Homologous To SPS1/STE20; Germinal Center Kinase-Related; MEK Kinase Kinase 5

### Application Instructions

Application table	Application	Dilution
	ICC/IF	5 µg/ml
	IHC-P	2-5 µg/ml
	WB	0.25-0.5 µg/ml
Application Note	* The dilutions indicate recommended starting dilutions and the optimal dilutions or concentrations should be determined by the scientist.	
Observed Size	95 kDa	

### Properties

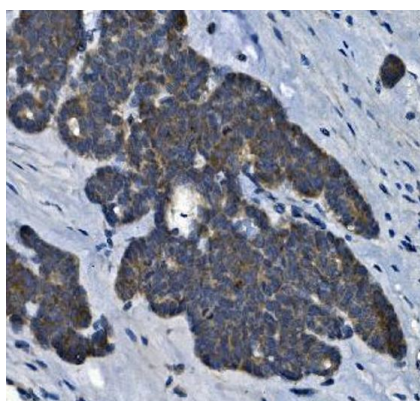
Form	Powder
Purification	Affinity purified
Buffer	0.9% NaCl, 0.2% Na <sub>2</sub> HPO <sub>4</sub> , 0.01% Sodium azide and 4% Trehalose.
Preservative	0.01% Sodium azide
Stabilizer	4% Trehalose
Concentration	0.5 mg/ml

Storage instruction	For continuous use, store undiluted antibody at 2-8°C for up to a week. For long-term storage, aliquot and store at -20°C or below. Storage in frost free freezers is not recommended. Avoid repeated freeze/thaw cycles. Suggest spin the vial prior to opening. The antibody solution should be gently mixed before use.
Note	For laboratory research only, not for drug, diagnostic or other use.

## Bioinformation

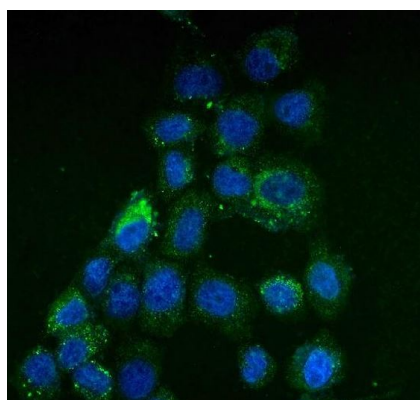
Gene Symbol	MAP4K5
Gene Full Name	Mitogen-Activated Protein Kinase Kinase Kinase Kinase 5
Background	This gene encodes a member of the serine/threonine protein kinase family, that is highly similar to yeast SPS1/STE20 kinase. Yeast SPS1/STE20 functions near the beginning of the MAP kinase signal cascades that is essential for yeast pheromone response. This kinase was shown to activate Jun kinase in mammalian cells, which suggested a role in stress response. Two alternatively spliced transcript variants encoding the same protein have been described for this gene.
Function	May play a role in the response to environmental stress. Appears to act upstream of the JUN N-terminal pathway. [UniProt]
Calculated Mw	95 kDa
PTM	Phosphoprotein. [UniProt]
Cellular Localization	Cytoplasm. [UniProt]

## Images



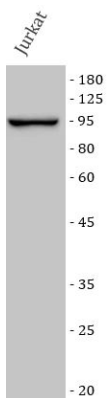
ARG45469 anti-MAP4K5 antibody IHC-P image

Immunohistochemistry: Human ovarian cancer stained with ARG45469 anti-MAP4K5 antibody at 2 µg/ml dilution.



ARG45469 anti-MAP4K5 antibody ICC/IF image

Immunofluorescence: A431 stained with ARG45469 anti-MAP4K5 antibody at 5 µg/ml dilution.



#### ARG45469 anti-MAP4K5 antibody WB image

Western blot: Jurkat stained with ARG45469 anti-MAP4K5 antibody at 0.5 µg/ml dilution.