

ARG45475 anti-FAM29A antibody

Package: 50 µg
Store at: -20°C

Summary

Product Description	Rabbit Polyclonal antibody recognizes FAM29A
Tested Reactivity	Hu
Tested Application	ICC/IF, IP, WB
Specificity	FAM29A
Host	Rabbit
Clonality	Polyclonal
Isotype	IgG
Target Name	FAM29A
Species	Human
Immunogen	Recombinant protein containing to human FAM29A.
Conjugation	Un-conjugated
Alternate Names	HAUS6; HAUS Augmin Like Complex Subunit 6; KIAA1574; FAM29A; Dgt6; Family With Sequence Similarity 29, Member A; HAUS Augmin-Like Complex Subunit 6; FLJ20060; Dim Gamma-Tubulin Homolog; DGT6

Application Instructions

Application table	Application	Dilution
	ICC/IF	5 µg/ml
	IP	0.5-2 µg/ml
	WB	0.25-0.5 µg/ml
Application Note	* The dilutions indicate recommended starting dilutions and the optimal dilutions or concentrations should be determined by the scientist.	
Observed Size	109 kDa	

Properties

Form	Powder
Purification	Affinity purified
Buffer	0.2% Na ₂ HPO ₄ , 0.9% NaCl and 4% Trehalose.
Stabilizer	4% Trehalose
Concentration	0.5 mg/ml
Storage instruction	For continuous use, store undiluted antibody at 2-8°C for up to a week. For long-term storage, aliquot and store at -20°C or below. Storage in frost free freezers is not recommended. Avoid repeated freeze/thaw cycles. Suggest spin the vial prior to opening. The antibody solution should be gently mixed

before use.

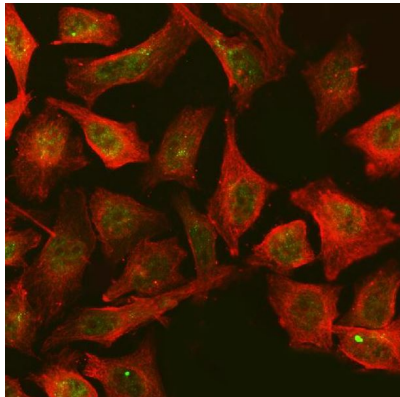
Note

For laboratory research only, not for drug, diagnostic or other use.

Bioinformation

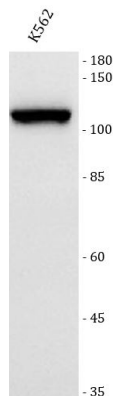
Gene Symbol	HAUS6
Gene Full Name	HAUS Augmin Like Complex Subunit 6
Background	The protein encoded by this gene is a subunit of the augmin complex. The augmin complex plays a role in microtubule attachment to the kinetochore and central spindle formation. This protein may have a role in efficient chromosome congression and segregation by promoting microtubule-dependent microtubule amplification. Pseudogenes of this gene are located on chromosomes 7 and 20. Alternative splicing results in multiple transcript variants that encode different protein isoforms. [provided by RefSeq, Aug 2012]
Function	Contributes to mitotic spindle assembly, maintenance of centrosome integrity and completion of cytokinesis as part of the HAUS augmin-like complex. Promotes the nucleation of microtubules from the spindle through recruitment of NEDD1 and gamma-tubulin. [UniProt]
Calculated Mw	109 kDa
PTM	Phosphoprotein. [UniProt]
Cellular Localization	Cytoplasm; Cytoskeleton; Microtubule. [UniProt]

Images



ARG45475 anti-FAM29A antibody ICC/IF image

Immunofluorescence: HeLa stained with ARG45475 anti-FAM29A antibody at 5 µg/ml dilution.



ARG45475 anti-FAM29A antibody WB image

Western blot: K562 stained with ARG45475 anti-FAM29A antibody at 0.5 µg/ml dilution.