

ARG45497 anti-C7orf30 antibody

Package: 50 µg
Store at: -20°C

Summary

Product Description	Rabbit Polyclonal antibody recognizes C7orf30
Tested Reactivity	Hu
Tested Application	FACS, IHC-P, WB
Specificity	C7orf30
Host	Rabbit
Clonality	Polyclonal
Isotype	IgG
Target Name	C7orf30
Species	Human
Immunogen	Recombinant protein containing to human C7orf30.
Conjugation	Un-conjugated
Alternate Names	MALSU1; Mitochondrial Assembly Of Ribosomal Large Subunit 1; C7orf30; MtRsfA; Mitochondrial Assembly Of Ribosomal Large Subunit Protein 1; Chromosome 7 Open Reading Frame 30

Application Instructions

Application table	Application	Dilution
	FACS	1 - 3 µg/10 ⁶ cells
	IHC-P	2-5 µg/ml
	WB	0.25-0.5 µg/ml
Application Note	* The dilutions indicate recommended starting dilutions and the optimal dilutions or concentrations should be determined by the scientist.	
Observed Size	24 kDa	

Properties

Form	Powder
Purification	Affinity purified
Buffer	0.2% Na ₂ HPO ₄ , 0.9% NaCl and 4% Trehalose.
Stabilizer	4% Trehalose
Concentration	0.5 mg/ml
Storage instruction	For continuous use, store undiluted antibody at 2-8°C for up to a week. For long-term storage, aliquot and store at -20°C or below. Storage in frost free freezers is not recommended. Avoid repeated freeze/thaw cycles. Suggest spin the vial prior to opening. The antibody solution should be gently mixed before use.

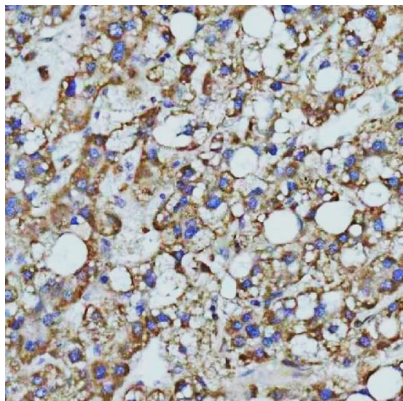
Note

For laboratory research only, not for drug, diagnostic or other use.

Bioinformation

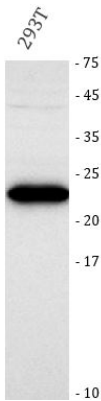
Gene Symbol	MALSU1
Gene Full Name	Mitochondrial Assembly Of Ribosomal Large Subunit 1
Background	Enables mitochondrial large ribosomal subunit binding activity. Involved in negative regulation of mitochondrial translation and ribosomal large subunit biogenesis. Located in cytosol and mitochondrion. [provided by Alliance of Genome Resources, Feb 2025]
Function	Required for normal mitochondrial ribosome function and mitochondrial translation [UniProt]
Calculated Mw	26 kDa
Cellular Localization	Mitochondrion. [UniProt]

Images



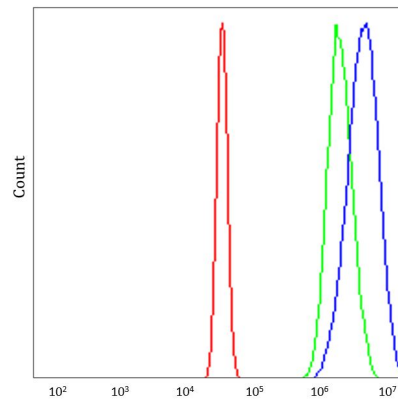
ARG45497 anti-C7orf30 antibody IHC-P image

Immunohistochemistry: Human liver cancer stained with ARG45497 anti-C7orf30 antibody at 2 µg/ml dilution.



ARG45497 anti-C7orf30 antibody WB image

Western blot: 293T stained with ARG45497 anti-C7orf30 antibody at 0.5 µg/ml dilution.



ARG45497 anti-C7orf30 antibody FACS image

Flow Cytometry: 293T stained with ARG45497 anti-C7orf30 antibody at $1\text{ }\mu\text{g}/10^6$ cells dilution.