

ARG45502 anti-ARHGEF7 antibody

Package: 50 µg
Store at: -20°C

Summary

Product Description	Rabbit Polyclonal antibody recognizes ARHGEF7
Tested Reactivity	Hu, Ms, Rat
Tested Application	FACS, ICC/IF, IHC-P, WB
Specificity	ARHGEF7
Host	Rabbit
Clonality	Polyclonal
Isotype	IgG
Target Name	ARHGEF7
Species	Human
Immunogen	Recombinant protein containing to human ARHGEF7.
Conjugation	Un-conjugated
Alternate Names	PAK-interacting exchange factor beta; COOL-1; COOL1; P50BP; BETA-PIX; Rho guanine nucleotide exchange factor 7; P85; P85SPR; P85COOL1; p85; Nbla10314; PAK3; P50; Beta-Pix; PIXB

Application Instructions

Application table	Application	Dilution
	FACS	1 - 3 µg/10 ⁶ cells
	ICC/IF	5 µg/ml
	IHC-P	2-5 µg/ml
	WB	0.25-0.5 µg/ml
Application Note	* The dilutions indicate recommended starting dilutions and the optimal dilutions or concentrations should be determined by the scientist.	
Observed Size	80 kDa	

Properties

Form	Powder
Purification	Affinity purified
Buffer	0.2% Na ₂ HPO ₄ , 0.9% NaCl and 4% Trehalose.
Stabilizer	4% Trehalose
Concentration	0.5 mg/ml
Storage instruction	For continuous use, store undiluted antibody at 2-8°C for up to a week. For long-term storage, aliquot and store at -20°C or below. Storage in frost free freezers is not recommended. Avoid repeated

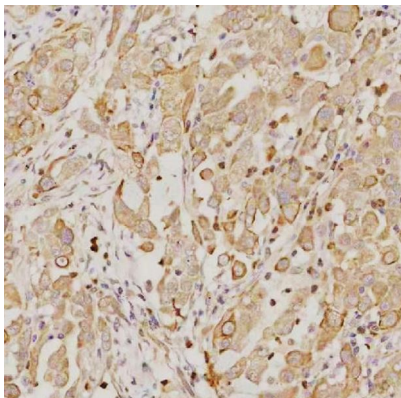
freeze/thaw cycles. Suggest spin the vial prior to opening. The antibody solution should be gently mixed before use.

Note For laboratory research only, not for drug, diagnostic or other use.

Bioinformation

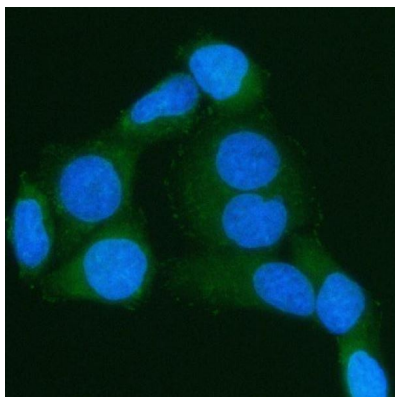
Gene Symbol	ARHGEF7
Gene Full Name	Rho guanine nucleotide exchange factor (GEF) 7
Background	Rho GTPases play a fundamental role in numerous cellular processes triggered by extracellular stimuli that work through G protein coupled receptors. The encoded protein belongs to a family of cytoplasmic proteins that activate the Ras-like family of Rho proteins by exchanging bound GDP for GTP. It forms a complex with the small GTP binding protein Rac1 and recruits Rac1 to membrane ruffles and to focal adhesions. This protein can induce membrane ruffling. Multiple alternatively spliced transcript variants encoding different isoforms have been described for this gene. [provided by RefSeq, Jul 2008]
Function	Acts as a RAC1 guanine nucleotide exchange factor (GEF) and can induce membrane ruffling. Functions in cell migration, attachment and cell spreading. Promotes targeting of RAC1 to focal adhesions (By similarity). May function as a positive regulator of apoptosis. Downstream of NMDA receptors and CaMKK-CaMK1 signaling cascade, promotes the formation of spines and synapses in hippocampal neurons. [UniProt]
Calculated Mw	90 kDa
PTM	Phosphorylated by PTK2/FAK1; this promotes interaction with RAC1 (By similarity). Phosphorylated on Ser-694 by CaMK1; enhancement of GEF activity and downstream activation of RAC1. [UniProt]
Cellular Localization	Cell junction; Cell projection; Cytoplasm. [UniProt]

Images



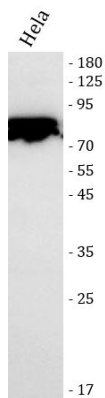
ARG45502 anti-ARHGEF7 antibody IHC-P image

Immunohistochemistry: Human lung adenocarcinoma stained with ARG45502 anti-ARHGEF7 antibody at 2 µg/ml dilution.



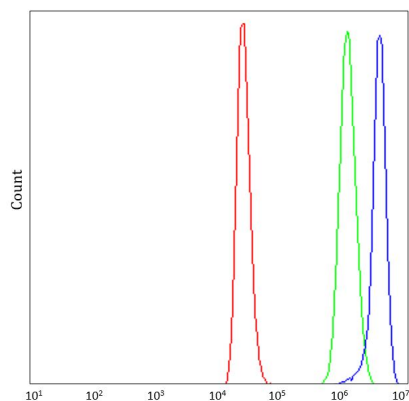
ARG45502 anti-ARHGEF7 antibody ICC/IF image

Immunofluorescence: HeLa stained with ARG45502 anti-ARHGEF7 antibody at 5 µg/ml dilution.



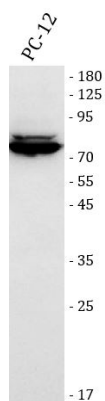
ARG45502 anti-ARHGEF7 antibody WB image

Western blot: HeLa stained with ARG45502 anti-ARHGEF7 antibody at 0.5 $\mu\text{g}/\text{ml}$ dilution.



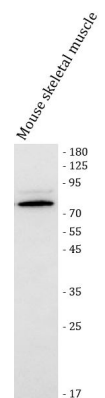
ARG45502 anti-ARHGEF7 antibody FACS image

Flow Cytometry: THP-1 stained with ARG45502 anti-ARHGEF7 antibody at 1 $\mu\text{g}/10^6$ cells dilution.



ARG45502 anti-ARHGEF7 antibody WB image

Western blot: PC-12 stained with ARG45502 anti-ARHGEF7 antibody at 0.5 $\mu\text{g}/\text{ml}$ dilution.



ARG45502 anti-ARHGEF7 antibody WB image

Western blot: Mouse skeletal muscle stained with ARG45502 anti-ARHGEF7 antibody at 0.5 $\mu\text{g}/\text{ml}$ dilution.