

ARG45506 anti-CtIP antibody

Package: 50 µg
Store at: -20°C

Summary

Product Description	Rabbit Polyclonal antibody recognizes CtIP
Tested Reactivity	Hu, Ms
Tested Application	FACS, ICC/IF, IHC-P, WB
Specificity	CtIP
Host	Rabbit
Clonality	Polyclonal
Isotype	IgG
Target Name	CtIP
Species	Human
Immunogen	Recombinant protein containing to human CtIP.
Conjugation	Un-conjugated
Alternate Names	RBBP8; RB Binding Protein 8, Endonuclease; RIM; COM1; CTIP; Sporulation In The Absence Of SPO11 Protein 2 Homolog; Retinoblastoma-Binding Protein 8; Retinoblastoma Binding Protein 8; CTBP-Interacting Protein; DNA Endonuclease RBBP8; RBBP-8; SCKL2; CtIP; SAE2; Retinoblastoma-Interacting Protein And Myosin-Like; CtBP-Interacting Protein; Seckel Syndrome 2; EC 3.1.-.- ; JAWAD; JWDS

Application Instructions

Application table	Application	Dilution
	FACS	1 - 3 µg/10 ⁶ cells
	ICC/IF	5 µg/ml
	IHC-P	2-5 µg/ml
	WB	0.25-0.5 µg/ml
Application Note	* The dilutions indicate recommended starting dilutions and the optimal dilutions or concentrations should be determined by the scientist.	

Properties

Form	Powder
Purification	Affinity purified
Buffer	0.2% Na ₂ HPO ₄ , 0.9% NaCl and 4% Trehalose.
Stabilizer	4% Trehalose
Concentration	0.5 mg/ml
Storage instruction	For continuous use, store undiluted antibody at 2-8°C for up to a week. For long-term storage, aliquot and store at -20°C or below. Storage in frost free freezers is not recommended. Avoid repeated

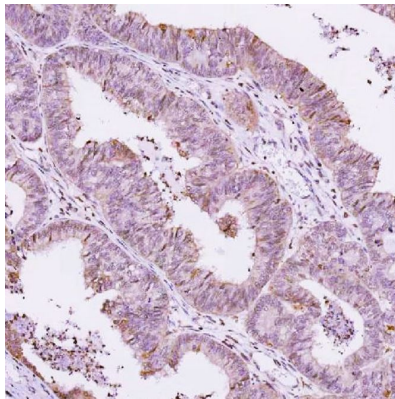
freeze/thaw cycles. Suggest spin the vial prior to opening. The antibody solution should be gently mixed before use.

Note For laboratory research only, not for drug, diagnostic or other use.

Bioinformation

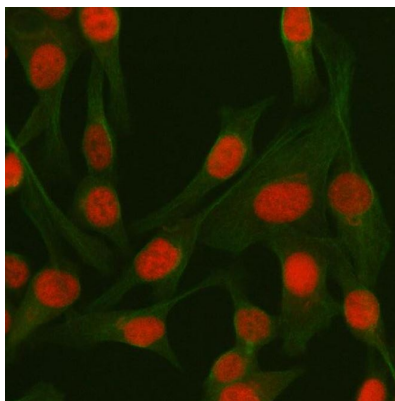
Gene Symbol	RBBP8
Gene Full Name	RB Binding Protein 8, Endonuclease
Background	The protein encoded by this gene is a ubiquitously expressed nuclear protein. It is found among several proteins that bind directly to retinoblastoma protein, which regulates cell proliferation. This protein complexes with transcriptional co-repressor CTBP. It is also associated with BRCA1 and is thought to modulate the functions of BRCA1 in transcriptional regulation, DNA repair, and/or cell cycle checkpoint control. It is suggested that this gene may itself be a tumor suppressor acting in the same pathway as BRCA1. Three transcript variants encoding two different isoforms have been found for this gene. More transcript variants exist, but their full-length natures have not been determined.
Function	Endonuclease that cooperates with the MRE11-RAD50-NBN (MRN) complex in DNA-end resection, the first step of double-strand break (DSB) repair through the homologous recombination (HR) pathway. [UniProt]
Calculated Mw	102 kDa
PTM	Isopeptide bond; Phosphoprotein; Ubl conjugation. [UniProt]
Cellular Localization	Chromosome; Nucleus. [UniProt]

Images



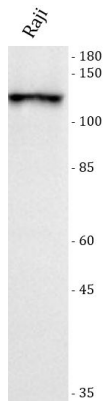
ARG45506 anti-CtIP antibody IHC-P image

Immunohistochemistry: Human endometrioid adenocarcinoma stained with ARG45506 anti-CtIP antibody at 2 µg/ml dilution.



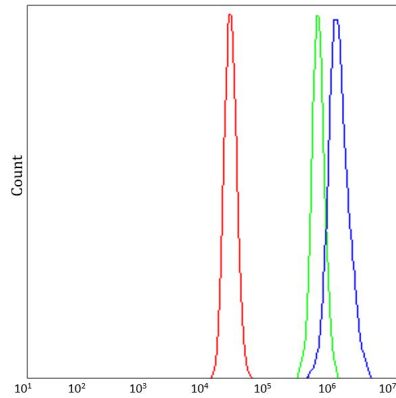
ARG45506 anti-CtIP antibody ICC/IF image

Immunofluorescence: HeLa stained with ARG45506 anti-CtIP antibody at 5 µg/ml dilution.



ARG45506 anti-CtIP antibody WB image

Western blot: Raji stained with ARG45506 anti-CtIP antibody at 0.5 $\mu\text{g/ml}$ dilution.



ARG45506 anti-CtIP antibody FACS image

Flow Cytometry: MCF-7 stained with ARG45506 anti-CtIP antibody at 1 $\mu\text{g}/10^6$ cells dilution.



ARG45506 anti-CtIP antibody WB image

Western blot: Mouse testis stained with ARG45506 anti-CtIP antibody at 0.5 $\mu\text{g/ml}$ dilution.